

A field study of auditory sensitivity of the Atlantic puffin, *Fratercula arctica*

T. Aran Mooney<sup>1\*</sup>, Adam Smith<sup>1,2</sup>, Ole Næsbye Larsen<sup>2</sup>, Kirstin Anderson Hansen<sup>2</sup>, and Marianne Rasmussen<sup>3</sup>

<sup>1</sup>Biology Department, Woods Hole Oceanographic Institution, Woods Hole, MA USA

<sup>2</sup>Department of Biology, University of Southern Denmark, Odense, Denmark

<sup>3</sup>University of Iceland's Research Center in Húsavík, Húsavík, Iceland

Key words: Auditory, Evoked potentials, Masking, Noise, Soundscape

Symbols and abbreviations:

AEPs – Auditory evoked potentials

\*Corresponding author: [amooney@whoi.edu](mailto:amooney@whoi.edu); 508-289-3714

## ABSTRACT

Hearing is vital for birds as they rely on acoustic communication with parents, mates, chicks, and conspecifics. Amphibious seabirds face many ecological pressures, having to sense cues in air and underwater. Natural noise conditions have helped shape this sensory modality but anthropogenic noise is increasingly impacting seabirds. Surprisingly little is known about their hearing, despite their imperiled status. Understanding sound sensitivity is vital when we seek to manage manmade noise impacts. We measured the auditory sensitivity of nine wild Atlantic puffins, *Fratercula arctica*, in a capture-and-release setting in an effort to define their audiogram and compare these data to the hearing of other birds and natural rookery noise. Auditory sensitivity was tested using auditory evoked potential (AEP) methods. Responses were detected from 0.5 to 6 kHz. Mean thresholds were below 40 dB re 20  $\mu$ Pa from 0.75 to 3 kHz indicating that these were the most sensitive auditory frequencies, similar to other seabirds. Thresholds in the ‘middle’ frequency range 1-2.5 kHz were often down to 10-20 dB re 20  $\mu$ Pa. Lowest thresholds were typically at 2.5 kHz. These are the first in-air auditory sensitivity data from multiple wild-caught individuals of a deep-diving Alcid seabird. The audiogram was comparable to other birds of similar size, thereby indicating that puffins have fully functioning aerial hearing despite the constraints of their deep-diving, amphibious lifestyles. There was some variation in thresholds, yet animals generally had sensitive ears suggesting aerial hearing is an important sensory modality for this taxon.

## INTRODUCTION

Birds have long been studied for their acoustic capabilities. The call structure, development and communication of songbirds, and the often impressive hearing abilities in taxa, such as owls, has received substantial attention (Konishi, 1973; Naguib and Riebel, 2014). The study of avian acoustic ecology has become increasingly vital as many bird populations decline. There has been increasing attention on how the noise in a bird's habitat may influence a range of behaviors and the overall population (Habib et al., 2007; Proppe et al., 2013; Quinn et al., 2006; Slabbekoorn and Ripmeester, 2008). Hearing data provides insight into how birds may use an acoustic habitat as well as support estimations of the frequencies and sound levels that may negatively impact a taxon (Dooling and Blumenrath, 2013; Dooling et al., 2000), and are therefore critical for determining habitat conservation and management needs.

Acoustic cues play an important role in the sensory biology of birds, including seabirds, which live at the interface of marine and terrestrial habitats. Many studies have focused on their calls and communication abilities, perhaps because of their often raucous colonies (Aubin and Jouventin, 1998). Species, such as Adélie (*Pygoscelis adeliae*), king (*Aptenodytes patagonicus*) and gentoo penguins (*P. papua*), use their calls to facilitate mate and chick identification as parents or partners return to the noisy colonies. Individuality can be conveyed through certain parameters including call duration, amplitude modulation rates, spectrum bandwidth, and distribution of energy among harmonics (Humphries et al., 2016; Jouventin et al., 1999; Kriesell et al., 2018; Ligout et al., 2016; Mathevon, 1997). In Wilson's storm-petrels (*Oceanites oceanicus*) and several auk species, chicks in poorer condition emit higher frequency calls, and these higher pitched calls also result in the chick receiving increased care, including larger meals (Gladbach et al., 2009; Klenova, 2015).

Research on seabird acoustic communication has led to a small but increasing body of evidence that noise may also impact this group of animals. Early work, examining the behavior of herring gulls (*Larus argentatus*), crested terns (*Thalasseus bergii*) or mixed species colonies showed the effects of intense aircraft noise and jet sonic booms on nesting animals, quantifying the sound levels of exposure and dose-based responses induced (Bowles et al., 1991; Brown, 1990; Burger, 1981; Dunnet, 1977). More recent studies have examined the impacts of noise from off-road vehicles, pedestrians, and human presence on American oystercatchers (*Haematopus palliatus*) and Brandt's cormorants (*Phalacrocorax penicillatus*). These observations showed that while more distant aircraft noise had minimal effects, the noise from nearby human presence resulted in birds spending less time on their

nests, and decreased survival of their hatchlings (Borneman et al., 2016; Buxton et al., 2017). Consequently, there is an increasing realization that even low-amplitude noise can have reproductive and population-level impacts, underscoring the need for audiograms and data on sound sensitivities for species of concern.

Indeed, to understand acoustic ecology and predict noise impacts, hearing data are vital. Hearing studies allow for the evaluation of baseline sound sensitivity, the audibility of calls and cues, as well as potential predictions of behavioral disturbance, and physiological or anatomical noise-induced damage. Yet we have few hearing data for the vast majority of seabird taxa. Initial work used both psychophysical and neurophysiological (cochlear potentials) methods to address hearing abilities of the mallard duck [*Anas platyrhynchos*; (Trainer, 1946)] and the black-footed penguin [*Spheniscus demersus*; (Wever et al., 1969)]. Recent laboratory efforts with the great cormorant (*Phalacrocorax carbo*) have produced audiograms using both psychophysical and auditory evoked potential (AEP) methods (Hansen et al., 2017; Larsen et al., 2020; Maxwell et al., 2017). The AEP recording method has been used as a rapid, physiological technique to measure auditory sensitivity in many taxa including various bird species and groups such as owls, canaries, aquatic taxa and, as noted, cormorants (Beatini et al., 2018; Brittan-Powell et al., 2002; Brittan-Powell et al., 2005; Crowell et al., 2015; Henry and Lucas, 2010; Lohr et al., 2013; Maxwell et al., 2016). The method involves measuring the neurological responses from components of the auditory system, including the auditory nerve and brainstem nuclei, to controlled sounds (Burkhard et al., 2007; Mooney et al., 2019b). Additional physiological studies have measured cochlear action potentials (Chen et al., 1993; Gleich et al., 1995; Gummer et al., 1987; Köppl and Gleich, 2007; Patuzzi and Bull, 1991; Saunders et al., 1973; Sun et al., 2000). These data sets have been invaluable, often providing hearing sensitivity estimates of species for which there were few or no hearing data. Notably, these physiological methods are generally considered to be only an estimate of psychophysically derived thresholds and typically provide hearing approximations that are less sensitive than behavioral audiograms (Brittan-Powell et al., 2002; Houser and Finneran, 2006a; Yuen et al., 2005).

Despite these advancements in hearing measurements, seabird audiogram data are few and preliminary. Initial results from the common murre (*Uria aalge*) and the Atlantic puffin (*Fratercula arctica*), both a sample size of one, showed hearing thresholds at multiple frequencies seemingly elevated by 40-80 dB compared to some other bird species measured with comparable methods (Mooney et al., 2019a; Mooney et al., 2019b). Aerial AEP data of the greater cormorant and Northern gannet also show relatively high hearing thresholds

(Crowell et al., 2015; Larsen et al., 2020). Perhaps, given the low sample size for the Auk data, the measurements should be repeated. These data together suggest that some seabirds may not hear well in air. This may be particularly true for birds that must make adaptive compromises as a result of pressures from their aquatic niche.

Auks (Alcidae family) are amphibious seabirds, spending most of their lives at sea, where they routinely forage, avoid predators, communicate and navigate underwater. The dive depths of puffins and common murrelets can routinely reach >150 meters (Piatt and Nettleship, 1985). Thus, it is conceivable that the air-filled sinuses and auditory abilities are modified in Auks, perhaps to withstand deep dives or enable underwater hearing. Such adaptations are noted in other amphibious taxa such as the elephant seal (*Mirounga angustirostris*), which hears a broader range of frequencies and is comparatively more sensitive underwater than in air (Kastak and Schusterman, 1999), and in the hippopotamus (*Hippopotamus amphibius*) which is thought to use bone conduction to hear sounds underwater (Barklow, 2004). The generalist diving cormorant is suggested to have particular adaptations for underwater hearing, a trade-off that seems to limit their in-air auditory thresholds (Cosolo et al., 2010; Larsen et al., 2020). If the pressures of deeper diving, or an underwater foraging lifestyle, do influence aerial hearing in multiple seabird species, we might expect similar, or perhaps poorer aerial sensitivity, for deep-diving Auks. New, in-air hearing measurements for an Auk species would shed light upon whether these taxa can hear well in air, and thus provide insight into their sensory ecology and communication.

Like other seabirds, Auks face many challenges, largely from climate-associated habitat changes and disturbance, habitat loss due to human development, and other anthropogenically-induced pressures (Lascelles et al., 2016). At least one Auk species, the great auk (*Pinguinus impennis*), was driven to extinction (Bengtson, 1984), and populations of several other species are listed as Threatened or Endangered. This includes the marbled murrelet (*Brachyramphus marmoratus*) and the Atlantic puffin (BirdLife International, 2018a; BirdLife International, 2018b). Given their conservation status and that airborne noise is a key pollutant affecting seabird behavior, hearing data are particularly valuable for the Auk family. Further, Atlantic puffins are a major tourist attraction in many areas. This certainly exposes them to potential acoustic stressors including human (often tourist) presence. Having an improved understanding of their hearing abilities would allow us to better evaluate noise as a stressor.

Here we measured the audiograms of nine wild Atlantic puffins. Our goals included addressing how well these seabirds heard in air and examining if the puffin AEP audiograms

were similar to AEP auditory sensitivity data of other birds to address whether their aerial hearing was comparatively limited given the constraints of the amphibious lifestyle. Finally, once we defined their audiogram, we sought to consider whether aerial anthropogenic noise is a potential threat to this taxon. The animals were captured, carefully anesthetized, and placed in a semi-anechoic chamber where AEP measurements were performed. Afterwards, the birds were allowed to recover from sedation and then released at the capture site.

## **MATERIALS AND METHODS**

### *Animals and Study Sites*

We measured the auditory sensitivity of nine wild Atlantic puffins (*F. arctica*) using auditory evoked potential recording methods (AEPs). The field-based AEP audiogram study was conducted in May 2018 and methods were nearly identical to a pilot study the prior year measuring the hearing of one Atlantic puffin and one common murre (Mooney et al., 2019b). The puffins were caught using a 10 x 1.5 m mesh net (10-cm diameter eye size) strung across multiple burrows at a rookery near Tjörnes, northern Iceland. As an animal exited the burrow, it became lightly entangled within the net. It was quickly removed (<2 min) by hand and placed in a soft, black bird bag. The bird was then transported to the hearing test site, a local farm shed, ca. 1 min drive away. The aluminum shed provided some shelter from potentially inclement Icelandic weather conditions.

Once at the hearing test site, the birds were immediately weighed and sedated with an intramuscular injection of a Ketamine hydrochloride - Xylazine hydrochloride 2:1 mixture. The initial dose was 20 mg/kg body weight and 10 mg/kg body weight for Ketamine and Xylazine, respectively. The animals' heart rates were monitored with a stethoscope and body temperature was continuously observed with a veterinary continuous digital anal monitor and probe (DataTherm II, USA). Rates and temperatures were recorded every 5 min. Body temperatures were kept between 40.5-41.5 °C while heart rates were ca. 200 beats per minute. Animals were ready for the hearing tests 15-20 min post-injection, as noted by a stable temperature, heart rate, respiration rate, minimal movement and closure of the eyes.

### *Acoustics and evoked potentials*

Auditory sensitivity tests were conducted in a portable semi-anechoic chamber built from a large wire-frame dog kennel (118 x 84 x 77 cm) that was insulated on all inner sides with 4 cm of soft bedding foam. The door was removed and replaced with an insulated foam

flap that could be closed during the hearing tests. A self-contained, battery-powered speaker+amplifier (a Nagra DSM speaker, functional range: 60-15,000 Hz  $\pm$  4 dB; Switzerland) placed at the far end of the kennel was used to produce the stimuli. The bird was placed on a bed liner near the kennel door with its head aligned toward the speaker during the hearing tests. This allowed easy access to monitor the animal's health status during the hearing test. Distance from a given bird's beak tip to the speaker was 68-70 cm, allowing the animals to be out of the near-field for all but the very lowest frequencies.

Full calibrations, including background noise measurements and stimulus tones were made both before and after the hearing tests, and stimuli and noise were monitored and recorded during each hearing test. The calibrations and sound level measurements were conducted by playing each stimulus at a constant attenuation level and recording the received sound pressure level using a precision sound level meter (type 2235, flat spectrum setting, Brüel & Kjær, Nærum, Denmark) with its microphone (type 4176) placed at the location of the bird's head. The sound level of each stimulus was controlled by the dB increase or decrease of the attenuator relative to this initial calibrated start value. The received tones were also measured during the hearing tests using the sound level meter, and attenuations and received levels were as expected. To ensure proper spectral content of the stimuli, signals were digitally recorded using a M-Audio Microtrack II recorder (Irwindale, USA) connected to the AC output of the sound level meter. Background noise measurements were similarly made using the sound level meter and saved on the Microtrack recorder. These data and the accuracy of the sound level meter were assessed relative to a 94-dB calibration tone (1 kHz, 1 Pa) from the calibrator of the sound level meter (type 4230, Brüel & Kjær, Nærum, Denmark).

The AEP methods used to test hearing thresholds were generally similar to prior AEP studies in birds (Beatini et al., 2018; Brittan-Powell et al., 2002; Brittan-Powell et al., 2005; Crowell et al., 2015; Henry and Lucas, 2010; Lohr et al., 2013; Maxwell et al., 2016). Hearing test tones and the evoked potentials were recorded using a custom-built LabVIEW (National Instruments, Austin, TX, USA) data acquisition program and a National Instruments PCMCIA-6062E data acquisition card implemented in a semi-ruggedized Panasonic Toughbook laptop computer. We started each examination with a broadband pulse constructed using 6 cycles of a 2 kHz signal (1.5 ms rise time until the peak, and a corresponding 1.5 ms fall time). The resulting "click" was relatively broadband with -10 dB energy from 4-12 kHz (see Supplementary Material for spectra) due to the short duration and rapid onset of the signal. We decreased the tone burst sound levels and measured the

thresholds of the click-based responses. The auditory frequency range was then examined using tone bursts of the following frequencies: 0.125, 0.25, 0.5, 1, 1.5, 2, 2.5, 3, 4, 6 and 8 kHz (for further details on experimental birds see Supplementary Material, Table 1). The tone-presentation order was prioritized, starting with 2 kHz [a frequency generally heard well in birds and showing clear responses in the 2017 pilot tests (Maxwell et al., 2017; Mooney et al., 2019b)]. We collected what was expected to be a clear response and threshold at 2 kHz, then a general audiogram (i.e., select frequencies), and as time allowed, additional frequencies for greater audiogram detail. Test tones were 10 ms in duration except for the 0.25 and 0.5 kHz tones, which were 20 ms in duration. Each test signal was created using a 256-kHz sample rate and presented at a rate of 10/s. The tone bursts were created using a sine envelope which allowed us to ramp-up, reach a maximum and immediately ramp down. With this design, spectral spreading due to signal onset or offset was limited (Supplementary Figure 1). An individual tone burst ramped up over 5 ms (10 ms for the longer duration tones at 0.25 and 0.5 kHz); the ramp down took the same amount of time. The maximum amplitude was found at 5 or 10 ms, depending on tone duration. In spite of this, the brief tones' modulation created some minor sidebands (see supplementary figure), but these were 40 dB lower than the center frequency, and thus minimal at low amplitudes (near thresholds) and were not expected to impact auditory sensitivity estimates (Supin and Popov, 2007).

Once the animal was sedated and stable, three 30-gauge, uncoated, stainless steel needle, evoked potential recording electrodes were inserted just under and parallel to the surface of the skin. The active electrode was placed just below the meatus of the anesthetized bird. The reference (inverting) electrode was attached at the vertex of the bird's head. A third "ground" electrode was inserted dorsally on the animal's back. The AEP system was then grounded to the soil using a long copper wire attached to a 20-cm carbon-fiber rod inserted into the earth outside the shed.

The electrodes were connected to a bandpass filter (300-3,000 Hz) and amplifier (CP511, Grass Technologies, Warwick, RI, USA), which amplified all responses 10,000-fold. A second 8-pole Krohn-Hite DC-powered single channel filter (FMB300, Brockton, MA, USA), (passband 300-3,000 Hz) further conditioned the signals. The AEP data were finally recorded using the custom laptop program. Responses were sampled at 16 kHz with records beginning coincident with stimulus presentation. Stimuli were presented 1,000 times for each sound level and 1,000 corresponding AEP responses were averaged and stored for later data analyses. The averaged evoked response waveforms were monitored in real-time at each sound level and stimuli were decreased in 5–10 dB steps using an HP 350D 5W 600 $\Omega$  DC



attenuator until evoked responses were no longer visually detectable for two to three trials. If no response was discernable relative to the background noise, the SPL was increased 20-30 dB for the last record of the frequency (confirming a response could still be obtained); after which the next frequency was tested.

Audiogram thresholds were calculated offline. Records were first examined in the time domain (Figure 1). To extract the AEP waveform from the background noise, cross-correlation functions (CCFs) between the evaluated record and a standard AEP waveform were computed, using an AEP record from a high-amplitude stimulus as the standard. The CCF peak was SPL and response dependent, with its delay lengthening and amplitude decreasing with each stimulus SPL decrease. To determine AEP hearing thresholds, the CCF peak magnitudes were plotted as a function of stimulus SPL expressed in dB re 20  $\mu$ Pa (further details shown in Mooney et al., 2019b). Intersection of the regression line with the zero-magnitude level was accepted as a threshold estimate (Nachtigall et al., 2007; Supin and Popov, 2007). Data were initially viewed via the custom LabVIEW software and EXCEL (Microsoft, USA). Subsequent analyses including calculating CCFs and regression-based thresholds were conducted using MatLab (Mathworks, USA) code. All threshold values are presented in dB re 20  $\mu$ Pa unless otherwise stated.

#### *Background noise measurements*

For comparison to the threshold results, background noise measurements were made within the hearing test chamber during experimentation and at the puffin rookery where the test subjects were captured. Background noise within the test chamber was recorded continuously for 3-5 minutes during experimentation with seven of the nine birds using an Olympus LS-12 Linear PCM recorder connected to the output channel of the Brüel & Kjær sound level meter (sample rate: 44.1 kHz). Background noise at the puffin rookery was recorded in 1-minute segments over 48 hours (June 3-6, 2018) using an SMM-A2 microphone attached to a Song Meter SM4 Acoustic Recorder (Wildlife Acoustics, Maynard, MA) on a 25% duty cycle at a sampling rate of 24 kHz. Analyses were conducted using custom MatLab code.

## RESULTS

Puffin evoked potentials were clearly observed in response to tones and broadband pulses during both data collection and post-hoc analyses. Like many other taxa, responses were SPL dependent, with response amplitude decreasing with received levels (Figure 1).

Responses were observable, and thus thresholds could be determined, from 0.5 to 6 kHz. Only one animal showed responses to 8 kHz (Figure 2, 3A). Individual mean and median thresholds were generally similar and varied between 6 and 19 dB (1 standard deviation, s.d.), depending on the frequency tested (Figure 2). Mean thresholds were below 40 dB re 20  $\mu$ Pa from 0.75-3 kHz, reflecting these as the most sensitive frequencies. Mean thresholds and AEP waveform responses to “middle” frequencies of 1-2.5 kHz reached ca. 10-20 dB re 20  $\mu$ Pa. The lowest mean thresholds were observed at 2.5 kHz (16 dB re 20  $\mu$ Pa) although only 4 animals were measured at this frequency (due to time constraints of the sedation). At 2 kHz, a frequency tested in all animals, thresholds were 20 dB  $\pm$ 12 dB (mean,  $\pm$ s.d.) and ranged from -4 to 37 dB re 20  $\mu$ Pa. Above 2.5 kHz, hearing thresholds increased steeply. Below 2.5 kHz, thresholds increased more gradually, roughly 12 dB per octave between 2 kHz and 500 Hz. The most sensitive thresholds approached the average background noise levels of the test chamber, reflecting high auditory sensitivity at these “best” puffin frequencies. The test chamber was relatively quiet within the frequency range of the hearing measurements (ca. 20 dB re 20  $\mu$ Pa) ensuring a quiet study environment (Figure 2).

There was some variability between the animals’ audiograms (Figure 3). These differences were examined in several ways to provide insight into the variability that exists in the wild and to provide options for assessing sound sensitivity. Thresholds from all birds were presented together, showing the range within and between individuals. Some individual puffins exhibited more variability. For example, birds 2018\_05, 2018\_07, and 2018\_09 showed particularly low thresholds at 1, 2, and 2.5 kHz, respectively (Figure 3, Supplementary Figure 2, Supplementary Table 1). The audiograms for animals 2018\_04 and 2018\_06 showed more consistency between frequencies. Most animals had very high auditory sensitivity; two even had thresholds below 0 dB re 20  $\mu$ Pa. Three animals had thresholds, at their most sensitive frequencies, that were within 2 dB of zero dB re 20  $\mu$ Pa.

The auditory abilities of many of the puffins tested were approximately the same sound level as the mean background noise levels of the birds’ cliffside nesting habitats. Yet the most sensitive thresholds (measured in a very quiet, semi-anechoic chamber) were below

these ambient noise conditions. This suggests that at times, the natural soundscape of the cliffside habitat would mask these animals' hearing abilities (but see discussion below). Of course, puffins nest in burrows with long entrance tunnels (0.5-1 m) and this tunnel may act like a lowpass filter, substantially reducing ambient noise, and a quiet place for puffins to acoustically communicate their low-amplitude signals.

Composite maximum and minimum thresholds were plotted for each frequency (Figure 3B), illustrating an empirically based assessment of both the most, and least, sensitive thresholds. This max-min assessment illustrates how much thresholds can vary at a particular frequency (Figure 3,4). This variation range could reach 40-50 dB for the more disparate thresholds (0.5, 2 and 3 kHz), but was as low as 10-20 dB (0.75, 1.5, and 2.5 kHz). The mean difference between maximum and minimum thresholds at each individual frequency for all nine puffins was 32 dB. The difference between maximum and minimum thresholds increased with frequency, although this relationship was weak ( $R^2=0.15$ ; Figure 4A). Furthermore, there was a positive correlative relationship of threshold variation (measured in s.d.) with hearing test frequency, showing that auditory variation increased with frequency ( $R^2 = 0.50$ ). However, this relationship was true only when not considering 0.5 kHz, for which thresholds varied by 17 dB (1 s.d.).

## DISCUSSION

### *The puffin audiogram*

Our AEP measurements resulted in audiograms of nine puffins, thereby rendering the first in-air hearing data on multiple wild-caught individuals of an Alcid species. The audiogram was comparable to other birds of similar size, indicating that these puffins have fully functioning aerial hearing. The upper frequency limit of auditory sensitivity in one animal was slightly higher than the rest (8 kHz vs 6 kHz). There was some variation in thresholds; the average standard deviation across frequencies was  $\pm 12$  dB (6-18 dB range). However, this variation might be considered minor, compared to intra-species differences noted in the audiograms of other wild taxa (e.g., humans, fishes and odontocetes) (Amoser and Ladich, 2005; Corso, 1959; Houser and Finneran, 2006b; Mooney et al., 2018). The frequency of greatest sensitivity (2.5 kHz) matched well with the data and predictions of Gleich et al (2005), who predicted hearing abilities based on body mass. Overall, the animals had generally sensitive ears, suggesting aerial hearing is an important sensory modality for this taxon. While puffin sounds are not well described, one would expect acoustic communication to play a key role in their ecology.

How to assess a wild population's "average" auditory sensitivity remains to be fully defined. Population assessments often summarize the audiogram using mean and median thresholds (Amoser and Ladich, 2005; Brittan-Powell et al., 2002; Houser and Finneran, 2006b; Sysueva et al., 2018), thereby creating a type of general or "representative" audiogram for the group of test subjects. These traditional methods are "standard" and allow for comparisons to many prior studies. Yet, these assessments can lead to potential biases when (i) a frequency with a small number of observations (from only a few animals) contains potential outlier data, or (ii) not all frequencies have the same number of data points (Branstetter et al., 2017). The latter can easily occur when limited by field constraints, sedation, other veterinary concerns, and health of the animal.

An alternate method, used in cetaceans (Branstetter et al., 2017; Finneran, 2016; Mooney et al., 2018; Popov et al., 2007) and birds (Gleich et al., 1995), examines the auditory thresholds of multiple animals together using a polynomial line to address all animals' threshold values (Figure 5). This polynomial interpolation can more robustly address sensitivity curves without major influences by certain data points and individuals (Branstetter et al., 2017).

In some cases, however, a standard or average audiogram of a species may not be the most appropriate or desired metric. For example, when assessing potential impacts of anthropogenic noise, particularly for endangered or threatened species, a conservative estimate of auditory sensitivity may be desired. We therefore calculated a separate polynomial line to address only the lowest, most sensitive, thresholds (grey line, Figure 5).

The composite minimum thresholds (Figure 3B) presented the "most sensitive" auditory abilities measured and provided an important way to address the near-limit of auditory sensitivity in these birds. This conservative method of addressing the population's auditory sensitivity is vital when considering anthropogenic noise impacts. Recent studies of noise influences on birds have shown that lower level noise from nearby human presence (talking, off-road vehicles, tourists), resulted in birds spending less time on their nests, and decreased survival of those hatchlings (Borneman et al., 2016; Buxton et al., 2017). These studies underscore the need for integrating the lower thresholds into management to limit acoustic disturbances. The methods outlined here provide managers with options in how they choose to evaluate a population's sound-sensitivity and protect a population from anthropogenic noise.

### *Comparative hearing*

To put these threshold values into context we compared the lowest and the mean puffin audiograms measured here to a number of other avian audiograms measured using AEP methods (Figure 6). This included the screech owl, the Northern saw-whet owl, budgerigar, cormorant, northern gannet, and lesser scaup (Beatini et al., 2018; Brittan-Powell et al., 2002; Brittan-Powell et al., 2005; Crowell et al., 2015; Larsen et al., 2020). Many of these audiograms were averages compiled in their respective papers. Yet there were some methodological differences between papers. For example, we averaged 1000 records [similar to (Brittan-Powell et al., 2002; Brittan-Powell et al., 2005)], whereas other researchers used fewer tone presentations and averages (Crowell et al., used 600, Beatini et al., used 800, Larsen et al., used 400 in the cormorant). Bandpass filter ranges were similar, but AEP amplifications differed between studies. The 10 ms tone durations used here were slightly longer than some of the tones in aforementioned previous research (except Larsen et al., 2020 who used 25 ms). We found that the 10 ms tone duration used in the current study was a good balance of creating an onset response, typical and necessary for obtaining clear AEPs, and generating a fairly narrow-band tone (Supplementary Material). The free-field is not easily obtained in sedated animals that must rest on a surface and the exact distance from animal to speaker also varied. It is difficult to conclude the combined effects of these various differences; thus the comparisons should be considered preliminary.

The thresholds for the puffins in this study were lower than those measured for a single puffin and common murre 2017 (Mooney et al., 2019b). While this could be due to species or population differences, we suggest the elevated thresholds in 2017 were likely the result of greater physiological noise in the data collected that year. The 2017 rms AEP noise levels for the puffin and murre were  $1.9 \pm 0.11 \mu\text{V}$  ( $n=5$  samples) and  $5.3 \pm 0.28 \mu\text{V}$  ( $n=5$  samples), respectively. In comparison, the AEP noise levels from all birds in 2018 were much lower, with a mean of  $0.89 \pm 0.15 \mu\text{V}$  rms (5 samples per bird). This may have been in part due to myogenic movement; the murre was snoring and moving subtly every 1-2 min throughout the examination, causing spikes in physiological noise. Such events, if rare, may be averaged out or the record can be repeated; however, if such movement occurs regularly it will increase noise levels. Such an issue is difficult to reduce in the field with limited recording time on a sedated animal. We were able to avoid these issues in 2018 with slightly lighter sedation and improved grounding at the puffin field site. Notably, we would suggest that AEP noise similarly affects thresholds in other studies as well. Crowell et al. (2015) and

Larsen et al. (2020) provide the most comprehensive summary of AEP audiograms in aquatic birds. The animals with the highest thresholds also seem to have the highest levels of physiological noise.

In the range 0.5-2.5 kHz, the mean puffin audiogram was typically lower (more sensitive) than all other birds noted except the Northern saw-whet owl (Figure 5, Supplementary Figure 2). Notably the saw-whet owl study used tone bursts that were relatively short duration and likely somewhat broadband. This would have stimulated a greater proportion of the basilar papillae and likely resulted in lowered thresholds compared to the more tonal stimuli used for other birds. At 3 kHz and above, the mean puffin audiogram was on par with the other birds' audiograms suggesting that hearing abilities at these frequencies were quite similar. The hearing range cut-off of the puffins was 6-8 kHz, also like non-owl birds; only the owls showed thresholds at higher frequencies. Further, the mean puffin audiogram was usually below (more sensitive than) the other seabirds (the lesser scaup, northern gannet and cormorant). Overall, this suggests the puffin auditory sensitivity in air was good and perhaps more sensitive than many other terrestrial and aquatic birds. This is despite having to cope with the constraints of pressure from diving down to great depths. Put another way, the ears have not overcompensated for diving adaptations and constraints by limiting in-air hearing. We do not know how well Auks hear underwater but initial tests suggest they do at least hear and respond to underwater sounds (Hansen et al., in press).

#### *Sensory ecology and considering noise*

The lowest thresholds (1-2.5 kHz) approached the levels of background noise measured in 1/3 octave bands of the test chamber, with some thresholds falling below the mean noise level. While some evidence suggests that the thresholds may have been masked, this may not be the case. Strictly speaking, it is the critical ratio, CR (e.g., the acoustic power in the tone over the spectrum level of noise) that is the relevant measure. Critical ratios have been measured in approximately 16 species of birds and on average are about 25 dB around 2-3 kHz (Dooling et al., 2000; Dooling et al., 1986). In the present study, the spectrum levels of the background noise from 1-3 kHz (data not shown) were ca. -10 to -20 dB re  $1 \mu\text{Pa}^2/\text{Hz}$ . Adding the average bird CR to these spectrum levels provides values of 5 to 15 dB, or less than the mean thresholds measured here (and nearly all thresholds), suggesting that the present audiograms were unmasked. The situation may be even better when it is considered that these spectrum levels are constant averages, but ambient noise is temporally structured,

so there would likely be co-modulated masking release and further unmasking the thresholds (e.g., see Klump, 1996).

A similar unmasked scenario is evident for the ‘quiet’ sound levels of the rookery where the puffins were caught and released indicating at quiet times, the puffin hearing is unmasked at the rookery. However, the rookery ambient noise data were selected to be when the wave and wind noise were low; as weather induced noise increases, the masking by the cliff-habitat is likely to increase. Yet, we might expect that inside the puffins’ burrows, and perhaps out at sea, conditions might be quieter and masking there reduced as well.

The puffins’ relatively high low-frequency auditory sensitivity is intriguing. Low frequencies tend to transmit with less attenuation in a constant media and can propagate well through *terra firma*. Puffins nest in underground burrows on the edge of cliffs. They might use low-frequency sounds to hear cues of predators walking above the burrows. Puffin vocalizations are also low frequency and not very high amplitude [unpublished observations, (Mooney et al., 2019a)]. Their auditory sensitivity likely facilitates hearing of conspecific calls, and perhaps nest, pair and young recognition.

Understanding puffin hearing is complicated by their amphibious and subterranean nature. In some taxa whose habitats span two media (often air and ground), hearing abilities are limited or adapted to a particular medium [i.e., some ants or snakes detect substrate borne sounds and hear airborne sound poorly (Roces and Tautz, 2001), and elephant seals hear well underwater but seemingly not as well in air (Kastak and Schusterman, 1999)]. Yet some amphibious species such as spotted and ringed seals and cormorants hear well in both air and water (Sills et al., 2014; Sills et al., 2015). At this point, we can conclude that puffins can hear well in air. Like many other seabirds, this suggests increasing human encroachment and airborne noise is a concern for this taxon.

Overall, this field-based audiometry represents a new step in bird acoustic ecology by enabling fast and flexible auditory measurements in more taxa and individuals of target species. Future studies could combine these hearing measurements with additional studies such demography, genetics or health measurements including potential influences of hormones, parasites, and contaminants (Mooney et al., 2018; Norman et al., 2012) to assess how hearing abilities may be associated with certain habitats, individual condition, relatedness and chronic stress. By combining auditory sensitivity data with the acoustic environment around the birds and the frequency content and amplitudes of their communication sounds, we can address how changes in background noise levels may lead to masking and shorter communication ranges. Indeed, the low aerial thresholds suggest that

these animals will easily detect anthropogenic noise. Given the influence of human encroachment on bird colonies (Buxton et al., 2017), these animals' sensitive hearing, and the fact that puffins are a major tourist attraction in many countries, we suggest that human disturbance noise, even low-level sounds from hikers and visitors, have the potential to disturb puffins. This may be true for other Auks as well. While seabird colonies may now be tourist destinations, many species have long been hunted. Human presence likely carries this evolutionary threat, particularly during nesting season, when puffins have been traditionally hunted from their burrows. These data show that puffins can have low auditory thresholds, illustrating the importance of this sensory modality for this taxon. These hearing abilities and accompanying acoustic communication are subsequently at risk of being impacted by anthropogenic noise. The rates of noise encroachment and the importance of preserving quiet or natural acoustic habitat conditions are topics deserving greater attention in the future. The ability to measure bird auditory sensitivity in the field allows us to rapidly examine hearing abilities in a range of different sea birds and perhaps other avian taxa, providing a broader understanding of the acoustic ecology of many taxa and the increasing encroachment of anthropogenic noise.



## **ACKNOWLEDGEMENTS**

The authors thank Porkell Lindberg Þórarinnsson and Yann Kolbeinsson of the Northeast Iceland Nature Research Centre for assistance locating bird colonies and catching birds. Magnus Wahlberg provided constructive comments on the manuscript. The permit for animal handling permit was provided by MAST (the Icelandic Food and Veterinary Authority). Magnus Wahlberg made valuable comments on the manuscript and study design. Work was conducted under a research permit from the Icelandic Environmental Agency permit and approved by the WHOI IACUC (#BI21798.01).

## **Competing Interests**

The authors declare no competing financial interests.

## **Author Contributions**

TAM, AS, KAH, MR and ONL participated in the fieldwork and designed the study. TAM wrote the initial draft. TAM, AS, and ONL analyzed data. All authors edited the manuscript.

## **Funding**

This work was supported by the U.S. Navy's Living Marine Resources Program and the Woods Hole Oceanographic Institution.

## REFERENCES

- Amoser, S. and Ladich, F.** (2005). Are hearing sensitivities of freshwater fish adapted to the ambient noise in their habitats? *Journal of Experimental Biology* **208**, 3533-3542.
- Aubin, T. and Jouventin, P.** (1998). Cocktail-party effect in king penguin colonies. *Proceedings of the Royal Society of London. Series B: Biological Sciences* **265**, 1665-1673.
- Barklow, W. E.** (2004). Amphibious communication with sound in hippos, Hippopotamus amphibius. *Animal Behaviour* **68**, 1125-1132.
- Beatini, J. R., Proudfoot, G. A. and Gall, M. D.** (2018). Frequency sensitivity in Northern saw-whet owls (*Aegolius acadicus*). *Journal of Comparative Physiology A* **204**, 145-154.
- Bengtson, S.-A.** (1984). Breeding ecology and extinction of the Great Auk (*Pinguinus impennis*): Anecdotal evidence and conjectures. *The Auk* **101**, 1-12.
- BirdLife International.** (2018a). Species factsheet: *Brachyramphus marmoratus*. IUCN Red List for birds. Downloaded from <http://www.birdlife.org> on 11/07/2018
- BirdLife International.** (2018b). Species factsheet: *Fratercula arctica*. IUCN Red List for birds. Downloaded from <http://www.birdlife.org> on 11/07/2018.
- Borneman, T. E., Rose, E. T. and Simons, T. R.** (2016). Off - road vehicles affect nesting behaviour and reproductive success of American Oystercatchers *Haematopus palliatus*. *Ibis* **158**, 261-278.
- Bowles, A., Awbrey, F. and Jehl, J.** (1991). The effects of high-amplitude impulsive noise on hatching success: a reanalysis of the Sooty Tern incident: BBN LABS INC CANOGA PARK CA.
- Branstetter, B. K., St. Leger, J., Acton, D., Stewart, J., Houser, D., Finneran, J. J. and Jenkins, K.** (2017). Killer whale (*Orcinus orca*) behavioral audiograms. *The Journal of the Acoustical Society of America* **141**, 2387-2398.
- Brittan-Powell, E. F., Dooling, R. J. and Gleich, O.** (2002). Auditory brainstem responses (ABR) in adult budgerigars (*Melopsitacus undulatus*). *Journal of the Acoustical Society of America* **112**, 999-1008.
- Brittan-Powell, E. F., Lohr, B., Hahn, D. C. and Dooling, R. J.** (2005). Auditory brainstem responses in the eastern screech owl: an estimate of auditory thresholds. *The Journal of the Acoustical Society of America* **118**, 314-321.

**Brown, A.** (1990). Measuring the effect of aircraft noise on sea birds. *Environment international* **16**, 587-592.

**Burger, J.** (1981). Behavioural responses of Herring Gulls *Larus argentatus* to aircraft noise. *Environmental Pollution Series A, Ecological and Biological* **24**, 177-184.

**Burkhard, R. F., Eggermont, J. J. and Don, M.** (2007). Auditory evoked potentials: Basic principles and clinical applications. Philadelphia, PA: Lippincott, Williams and Wilkins.

**Buxton, R. T., Galvan, R., McKenna, M. F., White, C. L. and Seher, V.** (2017). Visitor noise at a nesting colony alters the behavior of a coastal seabird. *Marine Ecology Progress Series* **570**, 233-246.

**Chen, L., Salvi, R. and Hashino, E.** (1993). Recovery of CAP threshold and amplitude in chickens following kanamycin ototoxicity. *Hearing Research* **69**, 15-24.

**Corso, J. F.** (1959). Age and sex differences in pure - tone thresholds. *The Journal of the Acoustical Society of America* **31**, 498-507.

**Cosolo, M., Ferrero, E. A. and Sponza, S.** (2010). Prey ecology and behaviour affect foraging strategies in the Great Cormorant. *Marine Biology* **157**, 2533-2544.

**Crowell, S. E., Wells-Berlin, A. M., Carr, C. E., Olsen, G. H., Therrien, R. E., Yannuzzi, S. E. and Ketten, D. R.** (2015). A comparison of auditory brainstem responses across diving bird species. *Journal of Comparative Physiology A* **201**, 803-815.

**Dooling, R. J. and Blumenrath, S. H.** (2013). Avian sound perception in noise. In *Animal Communication and Noise*, pp. 229-250: Springer.

**Dooling, R. J., Lohr, B. and Dent, M. L.** (2000). Hearing in birds and reptiles. In *Comparative hearing: Birds and reptiles*, pp. 308-359: Springer.

**Dooling, R. J., Okanoya, K., Downing, J. and Hulse, S.** (1986). Hearing in the starling (*Sturnus vulgaris*): Absolute thresholds and critical ratios. *Bulletin of the Psychonomic Society* **24**, 462-464.

**Dunnet, G.** (1977). Observations on the effects of low-flying aircraft at seabird colonies on the coast of Aberdeenshire, Scotland. *Biological Conservation* **12**, 55-63.

**Finneran, J. J.** (2016). Auditory weighting functions and TTS/PTS exposure functions for marine mammals exposed to underwater noise: Space and Naval Warfare Systems Center Pacific San Diego United States.

**Gladbach, A., Büßer, C., Mundry, R. and Quillfeldt, P.** (2009). Acoustic parameters of begging calls indicate chick body condition in Wilson's storm-petrels *Oceanites oceanicus*. *Journal of ethology* **27**, 267-274.

**Gleich, O., Klump, G. M. and Dooling, R. J.** (1995). Peripheral basis for the auditory deficit in Belgian Waterslager canaries (*Serinus canarius*). *Hearing Research* **82**, 100-108.

**Gummer, A. W., Smolders, J. W. and Klinke, R.** (1987). Basilar membrane motion in the pigeon measured with the Mössbauer technique. *Hearing Research* **29**, 63-92.

**Habib, L., Bayne, E. M. and Boutin, S.** (2007). Chronic industrial noise affects pairing success and age structure of ovenbirds *Seiurus aurocapilla*. *Journal of Applied Ecology* **44**, 176-184.

**Hansen, K. A., Hernandez, A., Mooney, T. A., Rasmussen, M. H., Sørensen, K. and Wahlberg, M.** (in press). Common murrets (*Uria aalge*) react to underwater noise. *Journal of the Acoustical Society of America*.

**Hansen, K. A., Maxwell, A., Siebert, U., Larsen, O. N. and Wahlberg, M.** (2017). Great cormorants (*Phalacrocorax carbo*) can detect auditory cues while diving. *The Science of Nature* **104**, 45.

**Henry, K. S. and Lucas, J. R.** (2010). Auditory sensitivity and the frequency selectivity of auditory filters in the Carolina chickadee, *Poecile carolinensis*. *Animal Behaviour* **80**, 497-507.

**Houser, D. S. and Finneran, J. J.** (2006a). A comparison of underwater hearing sensitivity in bottlenosed dolphins (*Tursiops truncatus*) determined by electrophysiological and behavioral methods. *Journal of the Acoustical Society of America* **120**, 1713-1722.

**Houser, D. S. and Finneran, J. J.** (2006b). Variation in the hearing sensitivity of a dolphin population determined through the use of evoked potential audiometry. *Journal of the Acoustical Society of America* **120**, 4090-4099.

**Humphries, D. J., Finch, F. M., Bell, M. B. and Ridley, A. R.** (2016). Vocal cues to identity: pied babblers produce individually distinct but not stable loud calls. *Ethology* **122**, 609-619.

**Jouventin, P., Aubin, T. and Lengagne, T.** (1999). Finding a parent in a king penguin colony: the acoustic system of individual recognition. *Animal Behaviour* **57**, 1175-1183.

**Kastak, D. and Schusterman, R.** (1999). In-air and underwater hearing sensitivity of a northern elephant seal (*Mirounga angustirostris*). *Canadian Journal of Zoology* **77**, 1751-1758.

**Klenova, A. V.** (2015). Chick begging calls reflect degree of hunger in three auk species (Charadriiformes: Alcidae). *PLoS ONE* **10**, e0140151.

**Klump, G. M.** (1996). Bird communication in the noisy world. In *Ecology and Evolution of Acoustic Communication in Birds*, eds. D. E. Kroodsma and E. H. Miller), pp. 321-338. New York: Cornell University.

**Konishi, M.** (1973). How the owl tracks its prey: experiments with trained barn owls reveal how their acute sense of hearing enables them to catch prey in the dark. *American Scientist* **61**, 414-424.

**Köppl, C. and Gleich, O.** (2007). Evoked cochlear potentials in the barn owl. *Journal of Comparative Physiology A* **193**, 601-612.

**Kriesell, H. J., Aubin, T., Planas - Bielsa, V., Benoiste, M., Bonadonna, F., Gachot - Neveu, H., Le Maho, Y., Schull, Q., Vallas, B. and Zahn, S.** (2018). Sex identification in King Penguins *Aptenodytes patagonicus* through morphological and acoustic cues. *Ibis* **160**, 755-768.

**Larsen, O. N., Wahlberg, M. and Christensen-Dalsgaard, J.** (2020). Amphibious hearing in a diving bird, the great cormorant (*Phalacrocorax carbo sinensis*). *Journal of Experimental Biology* **223**, jeb217265.

**Lascelles, B., Rice, J., Sato, M., Tarzia, M. and Wanless, R. M.** (2016). Seabirds. *United Nations Report*.

**Ligout, S., Dentressangle, F., Mathevon, N. and Vignal, C.** (2016). Not for Parents Only: Begging Calls Allow Nest - Mate Discrimination in Juvenile Zebra Finches. *Ethology* **122**, 193-206.

**Lohr, B., Brittan-Powell, E. F. and Dooling, R. J.** (2013). Auditory brainstem responses and auditory thresholds in woodpeckers. *The Journal of the Acoustical Society of America* **133**, 337-342.

**Mathevon, N.** (1997). Individuality of contact calls in the Greater Flamingo *Phoenicopterus ruber* and the problem of background noise in a colony. *Ibis* **139**, 513-517.

**Maxwell, A., Hansen, K. A., Larsen, O. N., Christensen-Dalsgaard, J., Wahlberg, M. and Siebert, U.** (2016). Testing auditory sensitivity in the great cormorant

(*Phalacrocorax carbo sinensis*): Psychophysics vs. Auditory brainstem response. In *Proceedings of Meetings on Acoustics 4ENAL*, vol. 27, pp. 050001: ASA.

**Maxwell, A., Hansen, K. A., Ortiz, S. T., Larsen, O. N., Siebert, U. and Wahlberg, M.** (2017). In-air hearing of the great cormorant (*Phalacrocorax carbo*). *Biology Open* **6**, 496-502.

**Mooney, T. A., Castellote, M., Quakenbush, L., Hobbs, R., Gaglione, E. and Goertz, C.** (2018). Variation in hearing within a wild population of beluga whales (*Delphinapterus leucas*). *Journal of Experimental Biology* **221**, jeb171959.

**Mooney, T. A., Smith, A., Hansen, K. A., Larsen, O. N., Wahlberg, M. and Rasmussen, M.** (2019a). Birds of a feather: Hearing and potential noise impacts in puffins (*Fratercula arctica*). In *Proceedings of Meetings on Acoustics 5ENAL*, vol. 37, pp. 010004: ASA.

**Mooney, T. A., Smith, A., Larsen, O. N., Hansen, K. A., Wahlberg, M. and Rasmussen, M. H.** (2019b). Field-based hearing measurements of two seabird species. *Journal of Experimental Biology* **222**, jeb190710.

**Nachtigall, P. E., Supin, A. Y., Amundin, M., Roken, B., Moller, T., Mooney, T. A., Taylor, K. A. and Yuen, M. M. L.** (2007). Polar bear *Ursus maritimus* hearing measured with auditory evoked potentials. *Journal of Experimental Biology* **210**, 1116-1122.

**Naguib, M. and Riebel, K.** (2014). Singing in space and time: the biology of birdsong. In *Biocommunication of animals*, pp. 233-247: Springer.

**Norman, S. A., Goertz, C. E., Burek, K. A., Quakenbush, L. T., Cornick, L. A., Romano, T. A., Spoon, T., Miller, W., Beckett, L. A. and Hobbs, R. C.** (2012). Seasonal hematology and serum chemistry of wild beluga whales (*Delphinapterus leucas*) in Bristol Bay, Alaska, USA. *Journal of Wildlife Diseases* **48**, 21-32.

**Patuzzi, R. and Bull, C.** (1991). Electrical responses from the chicken basilar papilla. *Hearing Research* **53**, 57-77.

**Piatt, J. F. and Nettleship, D. N.** (1985). Diving depths of four alcids. *The Auk* **102**, 293-297.

**Popov, V. V., Supin, A. Y., Plentenko, M. G., Tarakanov, M. B., Klishin, V. O., Bulgakova, Y. N. and Rosanova, E. I.** (2007). Audiogram variability in normal bottlenose dolphins (*Tursiops truncatus*). *Aquatic Mammals* **33**, 24-33.

**Proppe, D. S., Sturdy, C. B. and St Clair, C. C.** (2013). Anthropogenic noise decreases urban songbird diversity and may contribute to homogenization. *Global Change Biology* **19**, 1075-1084.

**Quinn, J. L., Whittingham, M., Butler, S. J. and Cresswell, W.** (2006). Noise, predation risk compensation and vigilance in the chaffinch *Fringilla coelebs*. *Journal of Avian biology* **37**, 601-608.

**Roces, F. and Tautz, J.** (2001). Ants are deaf. *The Journal of the Acoustical Society of America* **109**, 3080-3082.

**Saunders, J. C., Coles, R. B. and Gates, G. R.** (1973). The development of auditory evoked responses in the cochlea and cochlear nuclei of the chick. *Brain Research* **63**, 59-74.

**Sills, J. M., Southall, B. L. and Reichmuth, C.** (2014). Amphibious hearing in spotted seals (*Phoca largha*): underwater audiograms, aerial audiograms and critical ratio measurements. *Journal of Experimental Biology* **217**, 726-734.

**Sills, J. M., Southall, B. L. and Reichmuth, C.** (2015). Amphibious hearing in ringed seals (*Pusa hispida*): underwater audiograms, aerial audiograms and critical ratio measurements. *Journal of Experimental Biology* **218**, 2250-2259.

**Slabbekoorn, H. and Ripmeester, E. A.** (2008). Birdsong and anthropogenic noise: implications and applications for conservation. *Molecular Ecology* **17**, 72-83.

**Sun, H., Salvi, R., Ding, D.-L., Hashino, E., Shero, M. and Zheng, X.-Y.** (2000). Excitotoxic effect of kainic acid on chicken otoacoustic emissions and cochlear potentials. *The Journal of the Acoustical Society of America* **107**, 2136-2142.

**Supin, A. Y. and Popov, V. V.** (2007). Improved techniques of evoked-potential audiometry in odontocetes. *Aquatic Mammals* **33**, 14-23.

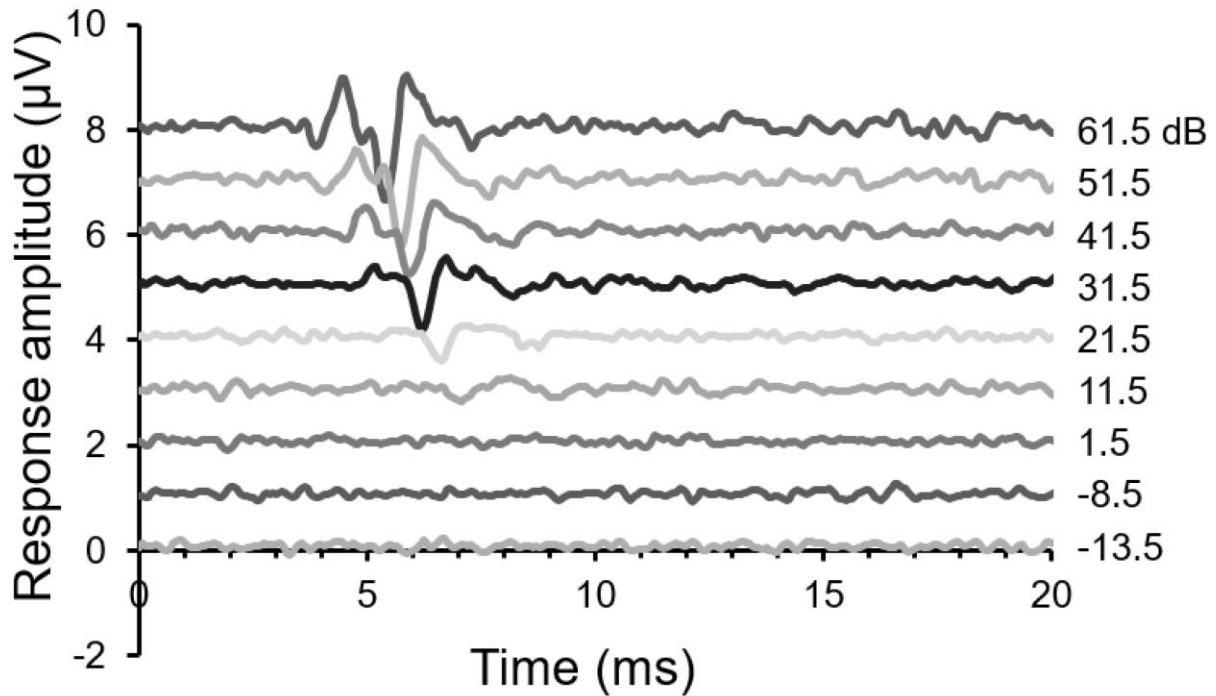
**Sysueva, E. V., Nechaev, D. I., Popov, V. V. and Supin, A. Y.** (2018). Electrophysiological audiograms in seven beluga whales (*Delphinapterus leucas*) from the Okhotsk Sea population. In *Proceedings of Meetings on Acoustics 175ASA*, vol. 33, pp. 010001: Acoustical Society of America.

**Trainer, J. E.** (1946). Auditory Acuity of Certain Birds: Graduate School of Cornell University.

**Wever, E. G., Herman, P. N., Simmons, J. A. and Hertzler, D. R.** (1969). Hearing in the blackfooted penguin, *Spheniscus demersus*, as represented by the cochlear potentials. *Proceedings of the National Academy of Sciences* **63**, 676-680.

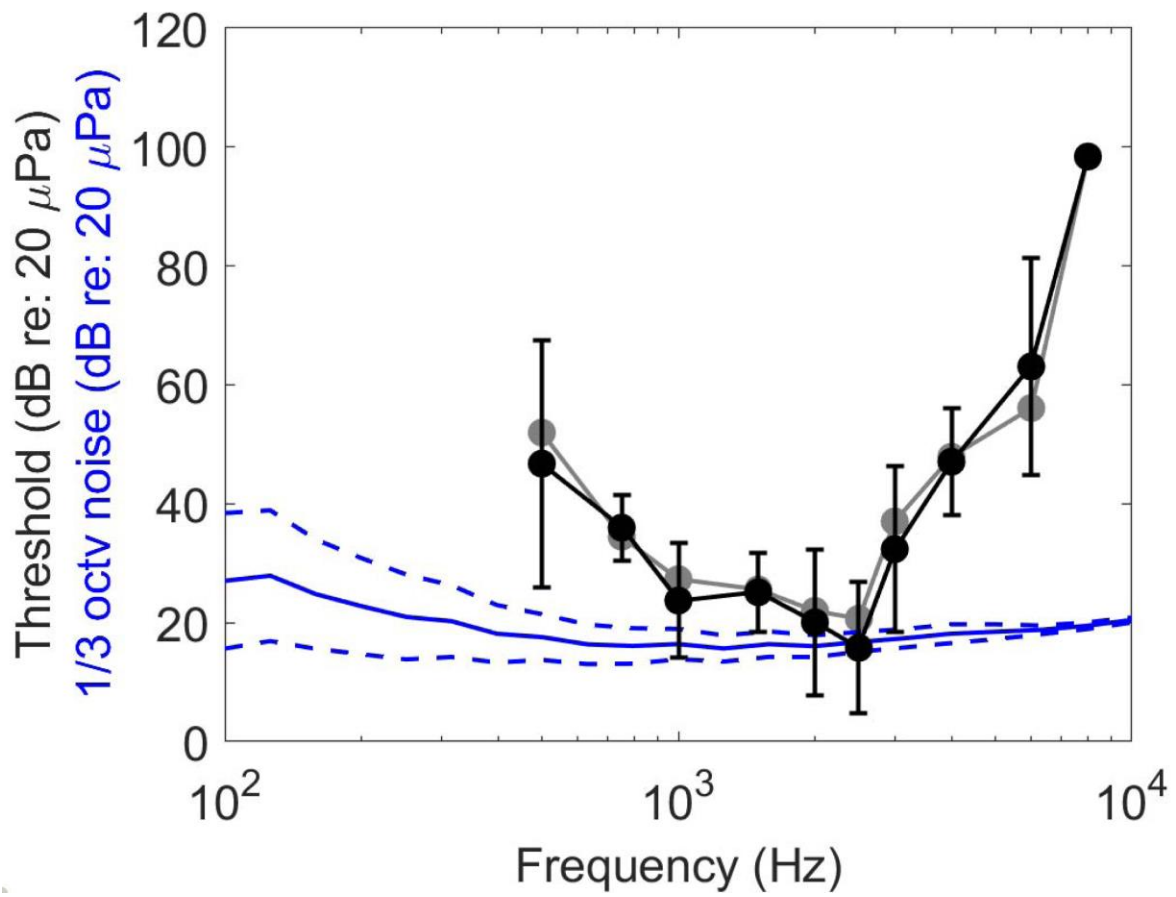
**Yuen, M. M. L., Nachtigall, P. E., Breese, M. and Supin, A. Y.** (2005). Behavioral and auditory evoked potential audiograms of a false killer whale (*Pseudorca crassidens*). *Journal of the Acoustical Society of America* **118**, 2688-2695.

## Figures

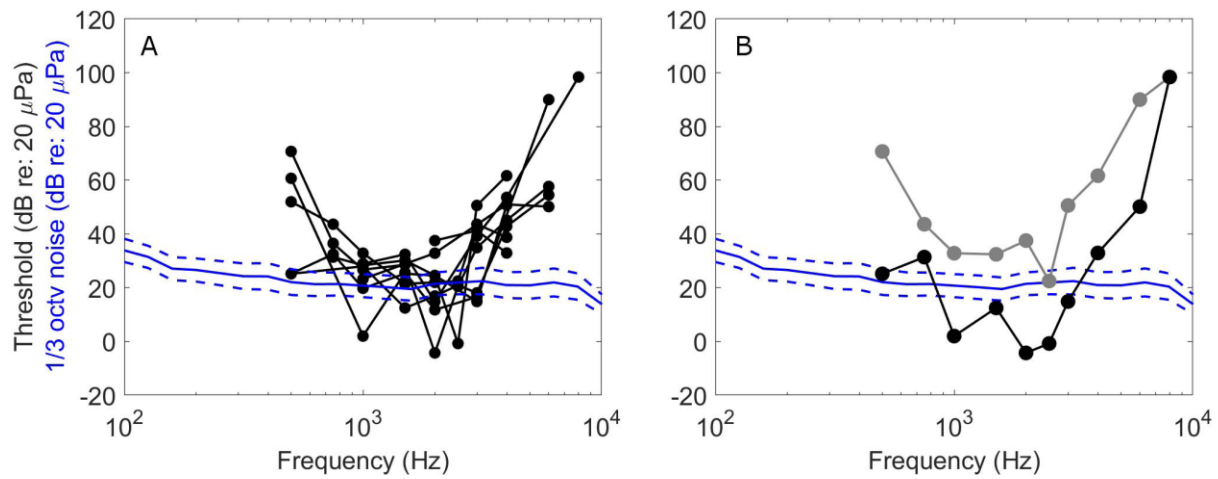


**Figure 1. Evoked potential waveforms of an Atlantic puffin from a stimulus pulse centered at 2 kHz.** Acoustic signals, not shown, started at 0 ms. Responses were latency dependent with earliest responses starting at ca. 3 ms after the pulse onset. Received levels (re 20  $\mu\text{Pa}$ ) are plotted to the right of the wave form.

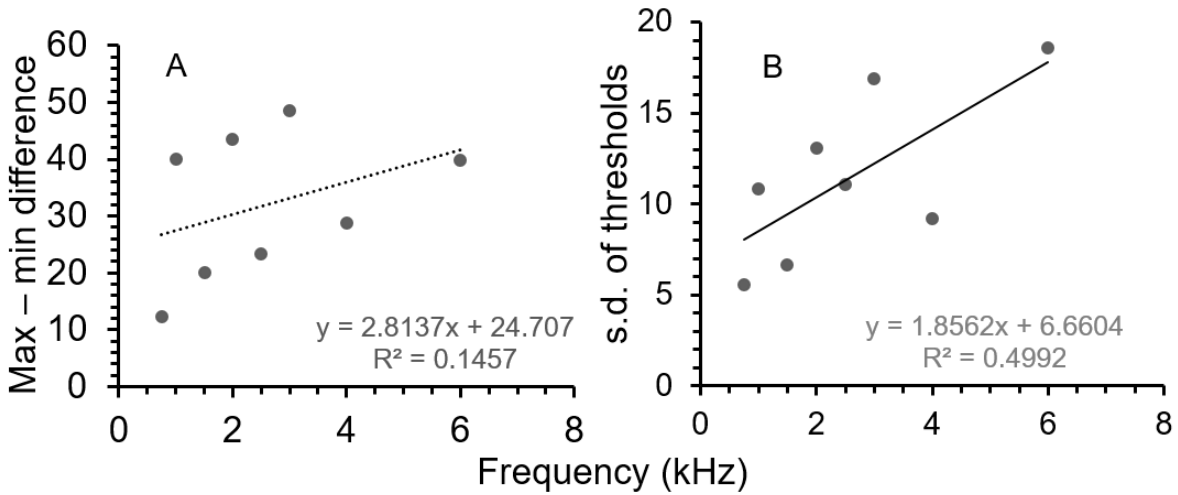




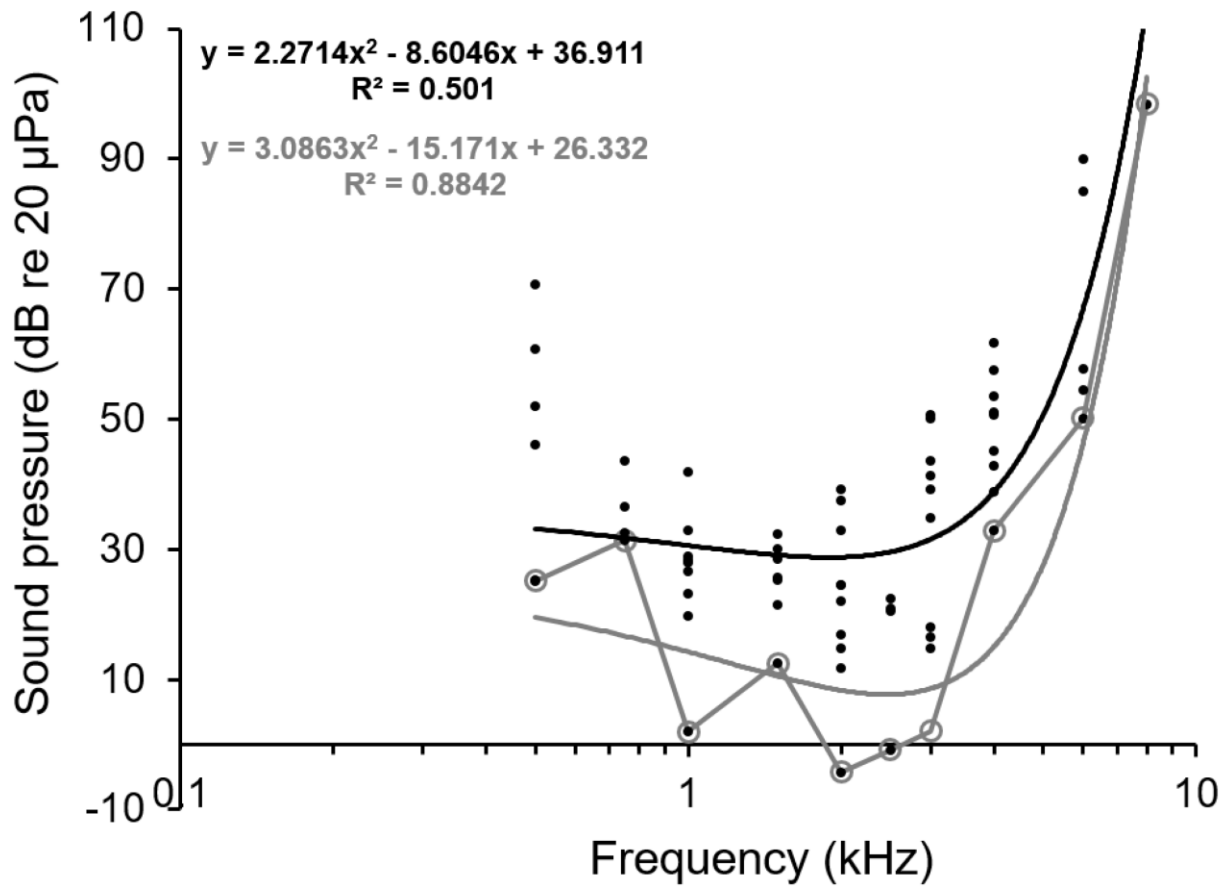
**Figure 2. Mean and median puffin audiograms.** Mean  $\pm$ s.d. (black) and median (grey) of all puffins. Ambient noise profile (blue; mean  $\pm$ s.d) of the hearing test chamber.



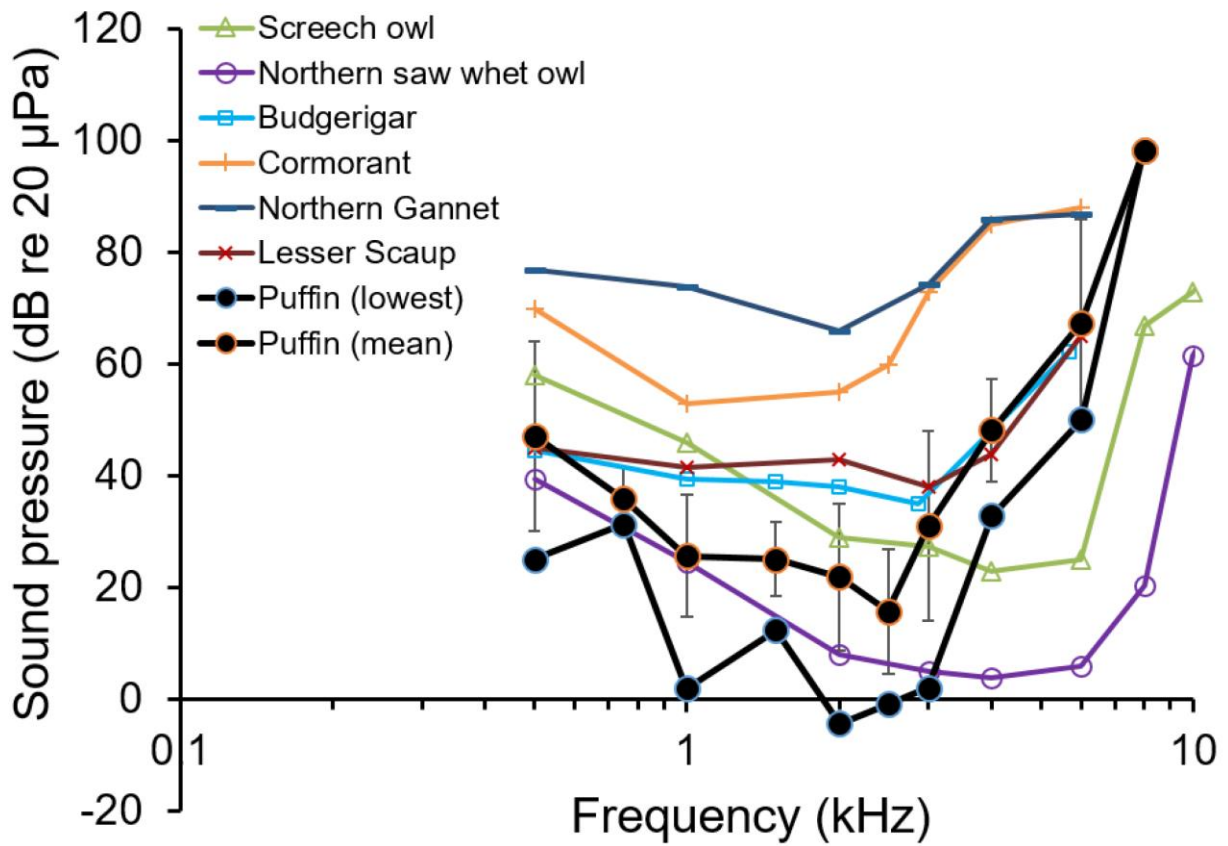
**Figure 3: Addressing audiogram variability.** (A) Combined audiograms of 9 Atlantic puffins. (B) Audiograms representing the highest thresholds (i.e. poorest sensitivity) and lowest thresholds (i.e. greatest sensitivity) for all Atlantic puffins. The noise profiles in both subplots (blue; mean  $\pm$  s.d.) show the ambient, third-octave noise levels from the rookery where the puffins were caught and released.



**Figure 4.** (A) Difference between the maximum and minimum thresholds (dB re: 20  $\mu$ Pa) for each hearing test frequency. The max-min difference showed a general linear increase, albeit weak relationship, with frequency tested, except for the lowest frequency (0.5 kHz, not shown). (B) Standard deviation of the thresholds relative to the frequencies tested. This variation also increased with frequency, showing greatest variation as hearing threshold increased (except again for 0.5 kHz).



**Figure 5. Responses of all puffins plotted using three curves that might be used to address population sound sensitivity.** The solid black curve is a best-fit second-degree polynomial line addressing all the measured hearing thresholds. The smooth grey curve is a best-fit second-degree polynomial that addresses just the lowest, most sensitive, hearing points noted by the grey circles. This curve reflects the most sensitive approximation of hearing. The equations and  $R^2$  for the polynomial lines are listed on the graph. The somewhat jagged grey line directly addresses the most sensitive hearing thresholds for each frequency. Note that the grey polynomial line often falls above the hearing threshold points at the most sensitive, mid-frequencies.



**Figure 6. Lowest and mean AEP audiogram thresholds compared to six other bird species also measured using AEP methods.** Audiograms from other studies include: (Beatini et al., 2018; Brittan-Powell et al., 2002; Brittan-Powell et al., 2005; Crowell et al., 2015; Larsen et al., 2020).

## Supplementary Material

Figure UI.

Recording of stimuli at the experimental site from the position of the bird. Spectra shown are (A) the broadband pulse and tones at 1, 2 and 4 kHz (B, C, and D respectively).

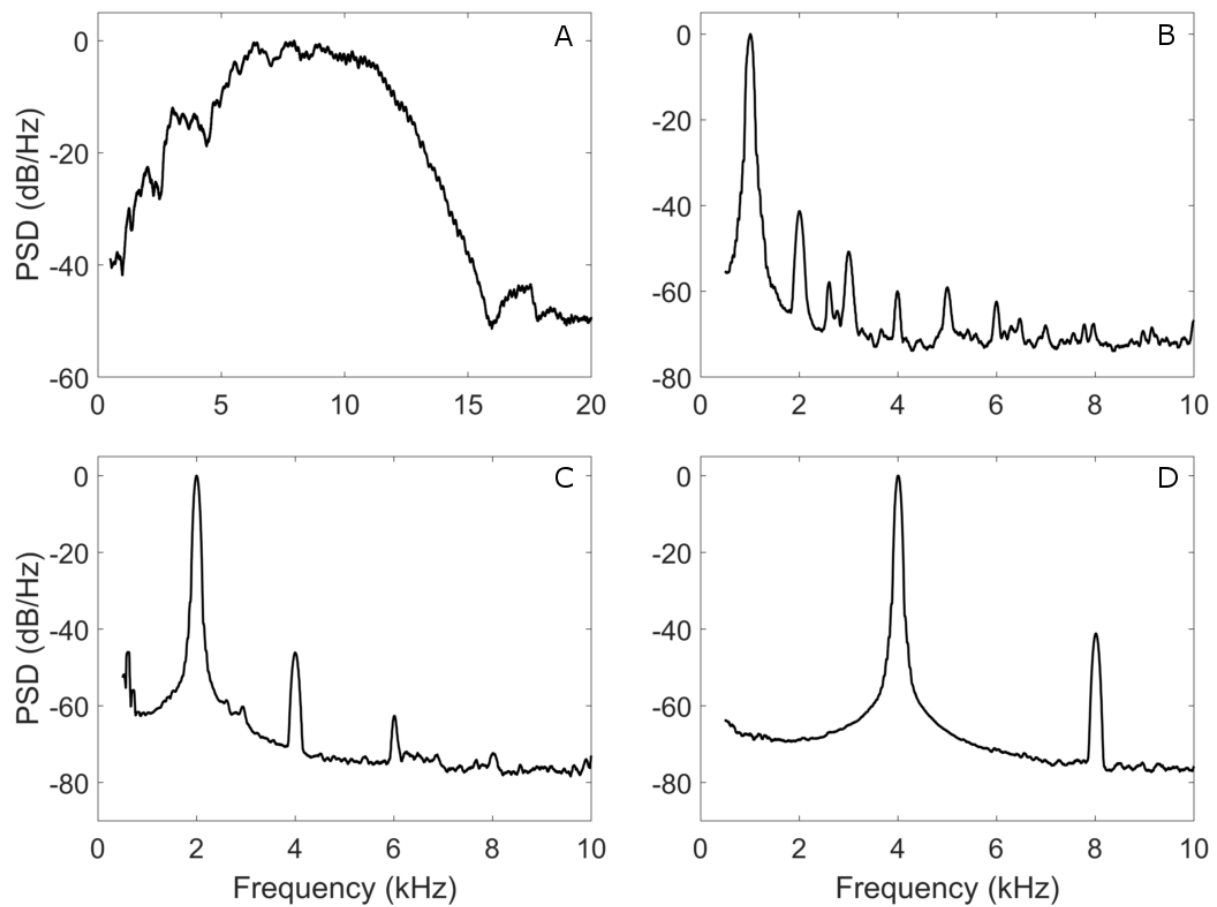


Figure 2.

Audiograms data for 9 Atlantic puffins showing individuals by color. Individual variability is notable.

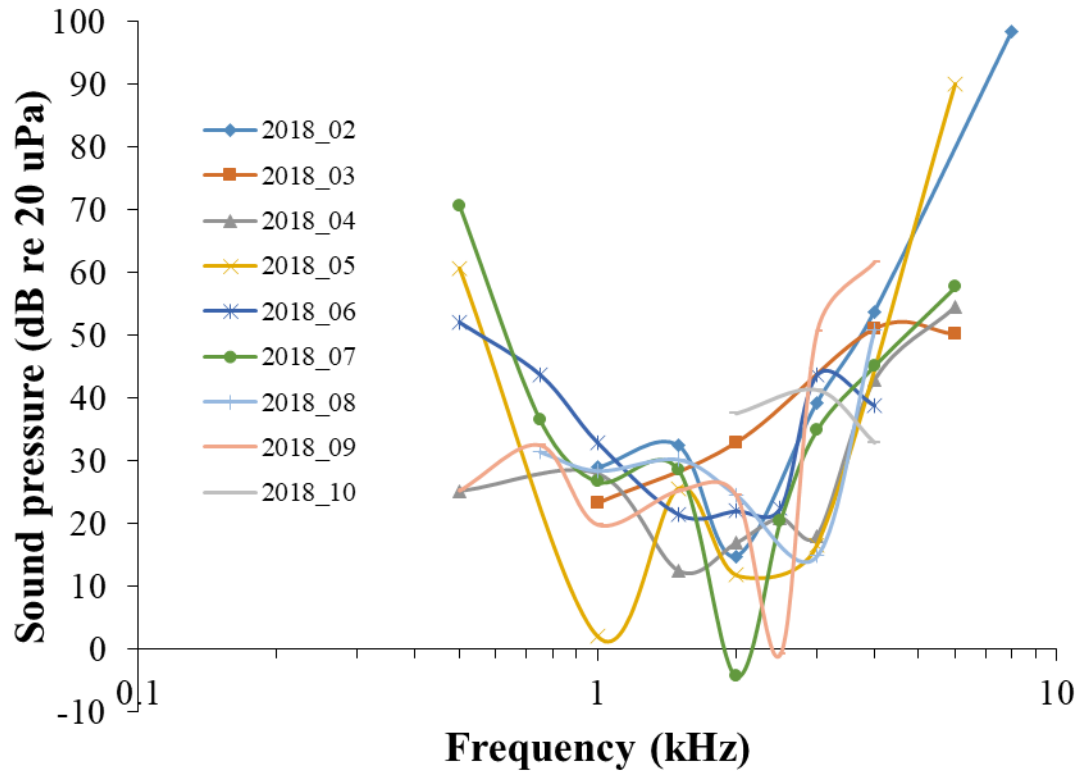


Figure 2.

Comparative audiograms of multiple bird taxa using (A) AEP methods, and (B) a broader array of physiological methods including AEPs and cochlear action potentials. References for the audiograms include: (Beatini et al., 2018; Brittan-Powell et al., 2002; Brittan-Powell et al., 2005; Chen et al., 1993; Crowell et al., 2015; Gleich et al., 1995; Gummer et al., 1987; Köppl and Gleich, 2007; Larsen et al., 2020).

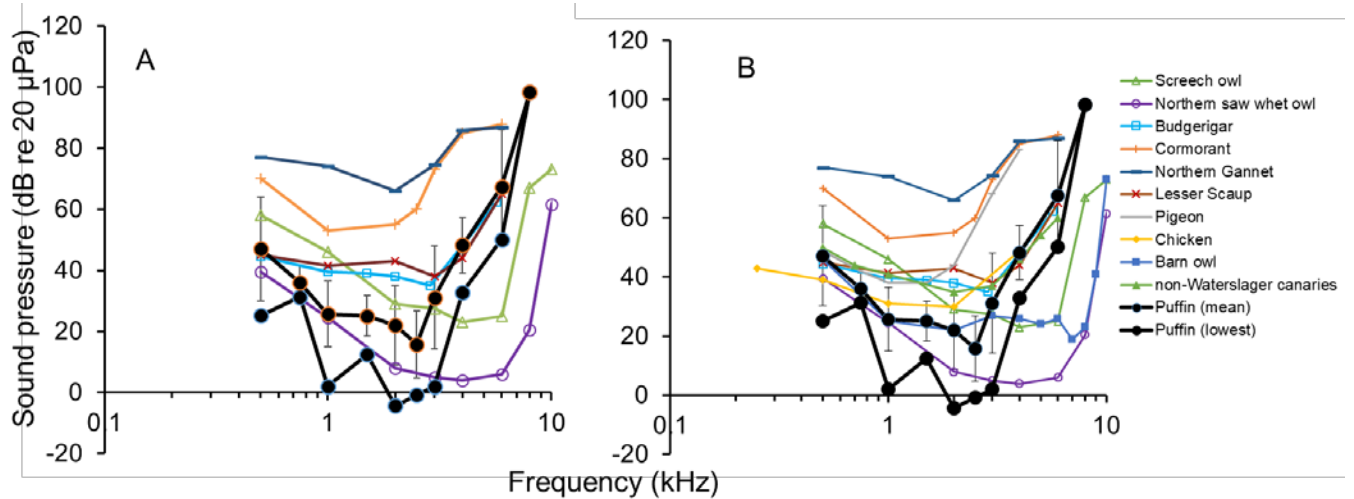




Table U1. Hearing thresholds and meta data of animals and hearing experiment.

Animal ID (inc year)	Fa2018_01	Fa2018_02	Fa2018_03	Fa2018_04	Fa2018_05	Fa2018_06	Fa2018_07	Fa2018_08	Fa2018_09	Fa2018_10	Mean
Weight	550	550	450	450	485	510	540	480	590	530	514
Total handling time (HH:MM)	1:25	3:59	2:11	2:48	2:19	3:06	2:49	2:19	2:36	2:13	3:52 (2:34)
Total audiogram time (1st to last record)	0:44	1:45	1:15	1:37	1:13	1:45	1:31	1:12	1:25	0:46	1:34 (1:19)
Hearing test frequency (kHz)	Hearing thresholds (dB re 20 uPa)										
0.5		NR	NR	17.0	50.3	52.0	70.7		45.5		47.1
0.75						43.6	43.6	31.4	12.2		32.7
1		28.9	25.7	10.8	27.9	32.8	41.9	2.0	39.9		26.3
1.5		32.4		6.6	25.6	21.4	32.4	12.5	19.9		21.6
2		14.8	22.0	13.1	23.2	22.0	39.3	-4.3	43.6	43.6	24.1
2.5				11.1		22.5	22.5		23.3		19.8
3		39.2		16.9	37.0	43.6	50.6	2.1	48.5	48.5	35.8
4		53.6	48.2	9.2		38.8	61.7	32.9	28.8	28.8	37.7
6			67.5	18.6	57.7	NR	90.0	NR	NR	NR	58.4
8		98.4									98.4
click	29.0	5.0	15.4	2.4	5.9	8.7	-15.9	2.6	4.0	4.3	6.1

**Beatini, J. R., Proudfoot, G. A. and Gall, M. D.** (2018). Frequency sensitivity in Northern saw-whet owls (*Aegolius acadicus*). *Journal of Comparative Physiology A* **204**, 145-154.

**Brittan-Powell, E. F., Dooling, R. J. and Gleich, O.** (2002). Auditory brainstem responses (ABR) in adult budgerigars (*Melopsitacus undulatus*). *Journal of the Acoustical Society of America* **112**, 999-1008.

**Brittan-Powell, E. F., Lohr, B., Hahn, D. C. and Dooling, R. J.** (2005). Auditory brainstem responses in the eastern screech owl: an estimate of auditory thresholds. *The Journal of the Acoustical Society of America* **118**, 314-321.

**Chen, L., Salvi, R. and Hashino, E.** (1993). Recovery of CAP threshold and amplitude in chickens following kanamycin ototoxicity. *Hearing Research* **69**, 15-24.

**Crowell, S. E., Wells-Berlin, A. M., Carr, C. E., Olsen, G. H., Therrien, R. E., Yannuzzi, S. E. and Ketten, D. R.** (2015). A comparison of auditory brainstem responses across diving bird species. *Journal of Comparative Physiology A* **201**, 803-815.

**Gleich, O., Klump, G. M. and Dooling, R. J.** (1995). Peripheral basis for the auditory deficit in Belgian Waterslager canaries (*Serinus canarius*). *Hearing Research* **82**, 100-108.

**Gummer, A. W., Smolders, J. W. and Klinke, R.** (1987). Basilar membrane motion in the pigeon measured with the Mössbauer technique. *Hearing Research* **29**, 63-92.

**Köppl, C. and Gleich, O.** (2007). Evoked cochlear potentials in the barn owl. *Journal of Comparative Physiology A* **193**, 601-612.

**Larsen, O. N., Wahlberg, M. and Christensen-Dalsgaard, J.** (2020). Amphibious hearing in a diving bird, the great cormorant (*Phalacrocorax carbo sinensis*). *Journal of Experimental Biology* **223**, jeb217265.