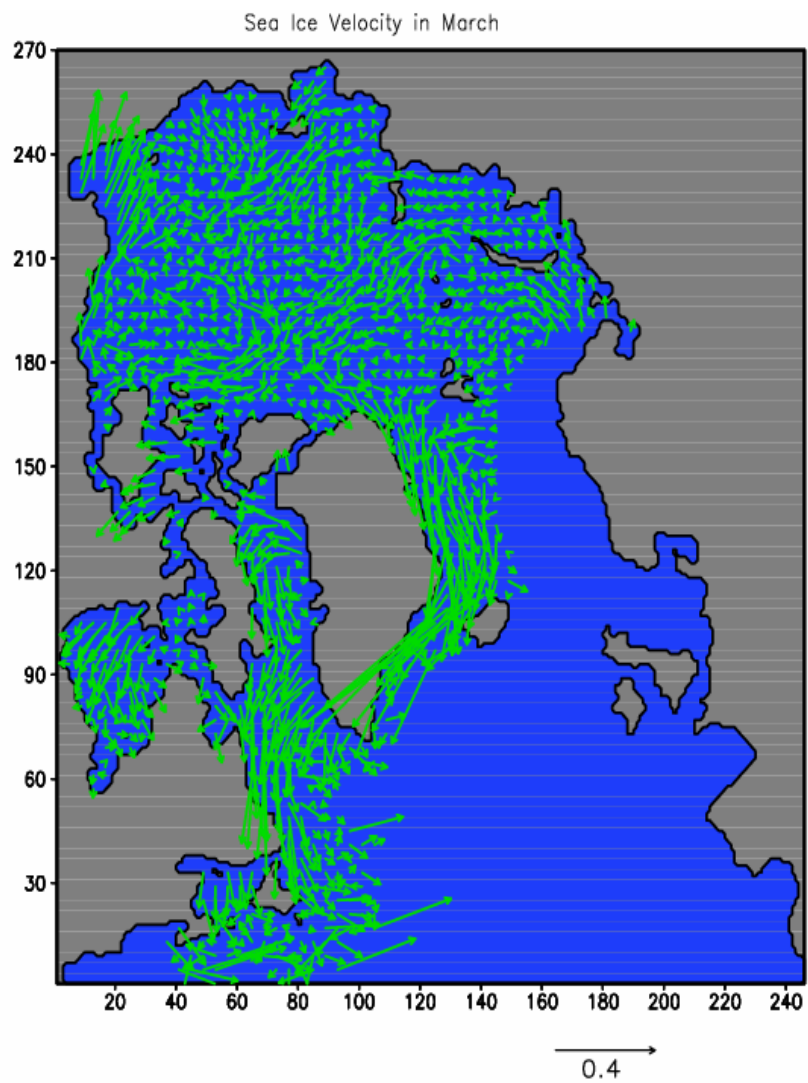


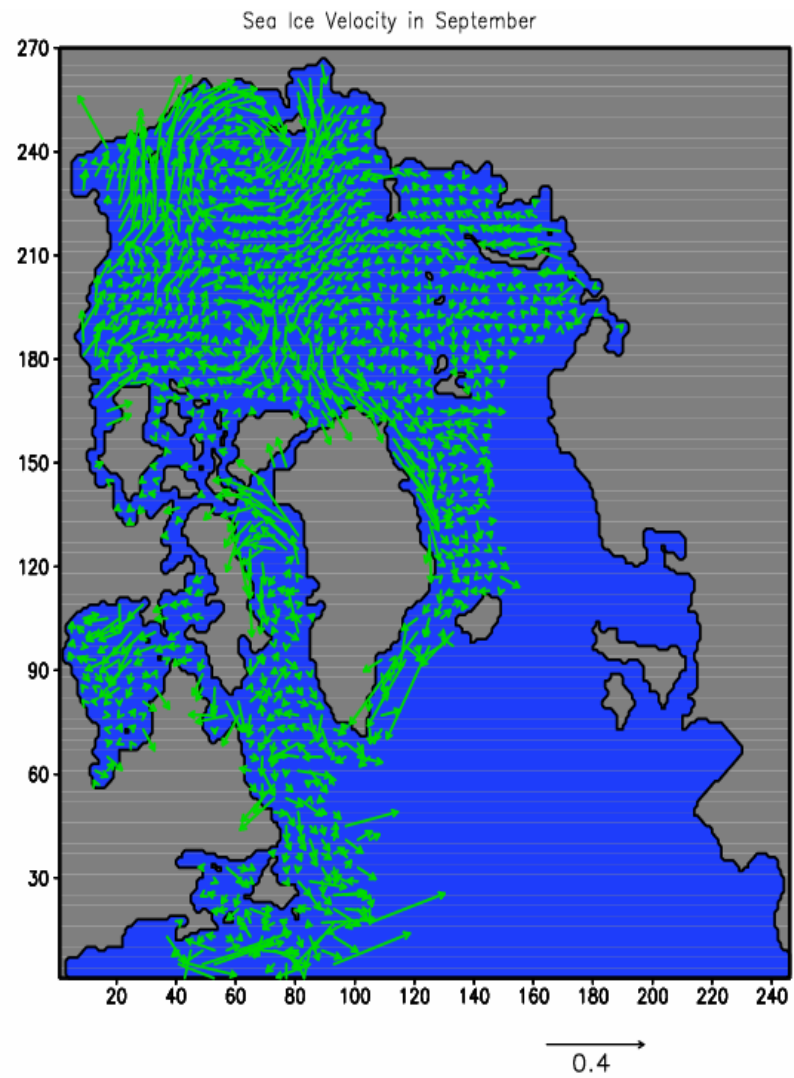
The AOMIP Spinup Experiment of a IARC-FRSGC Coupled Ice-Ocean Model (CIOM)

Jia Wang, Bingyi Wu and Meibing Jin

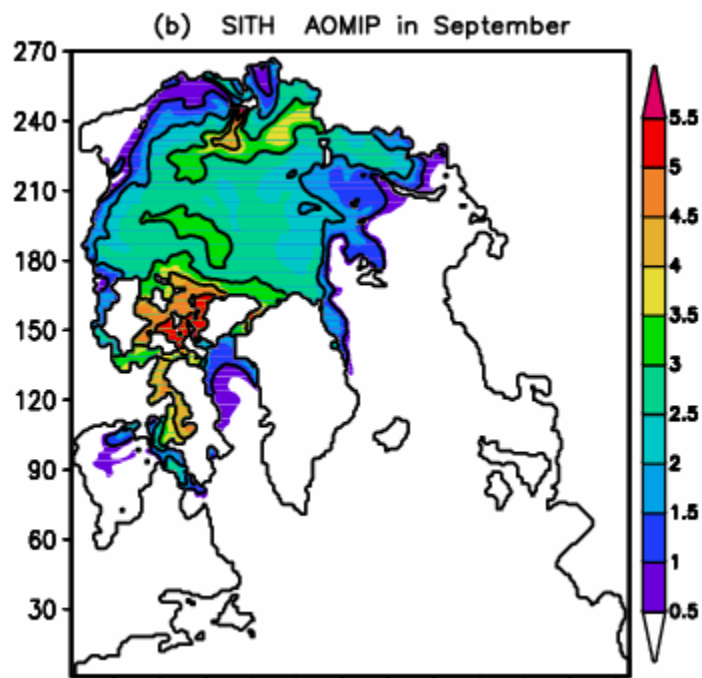
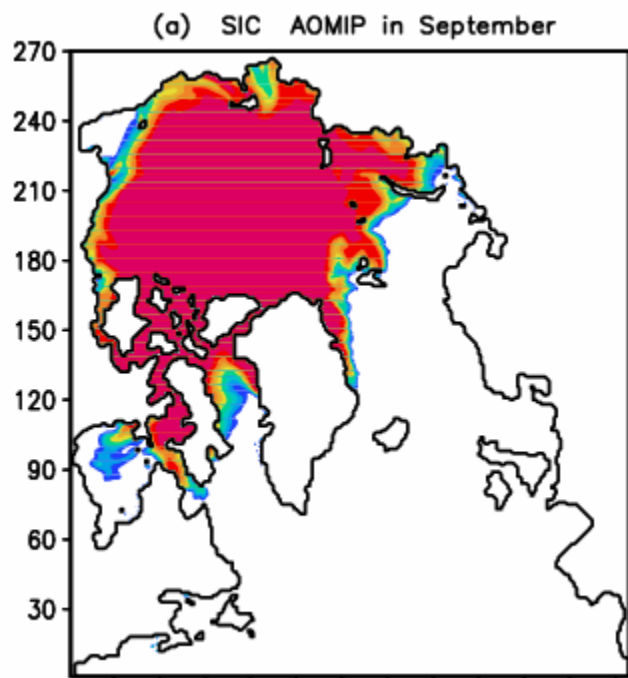
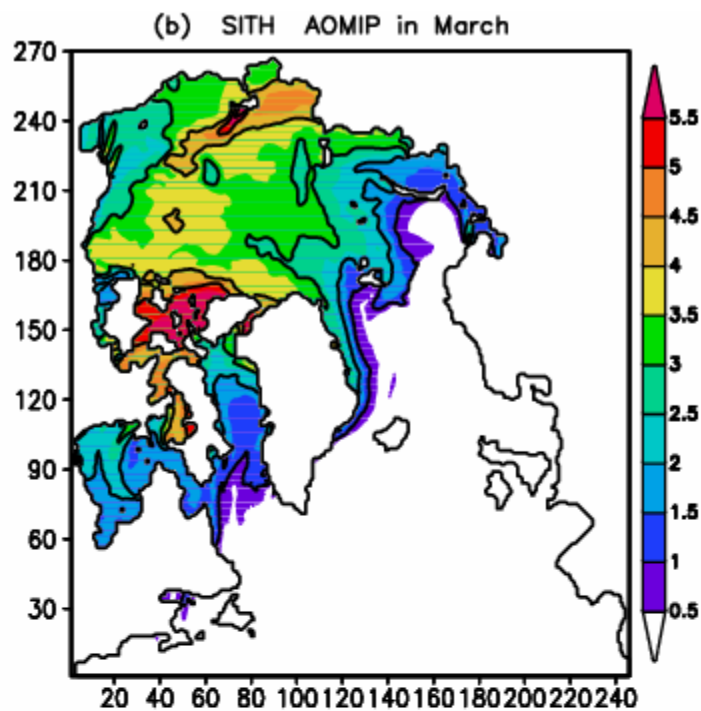
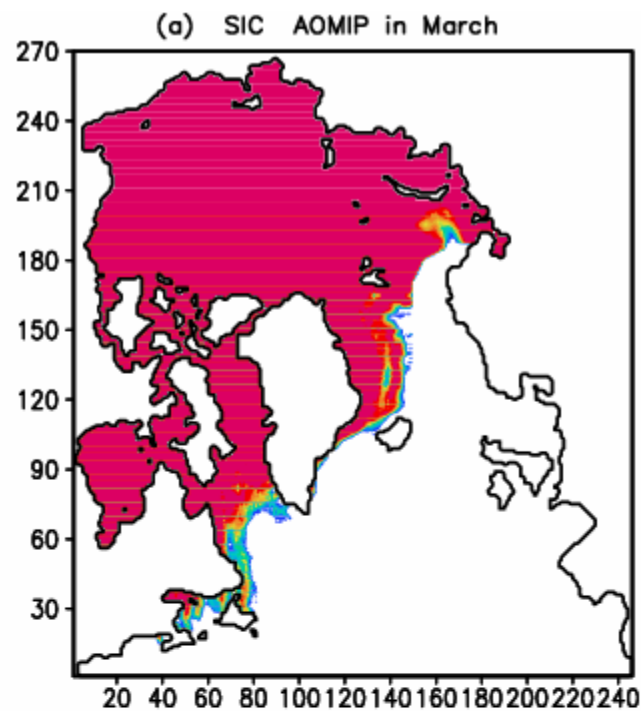
IARC-FRSGC and IMS, UAF



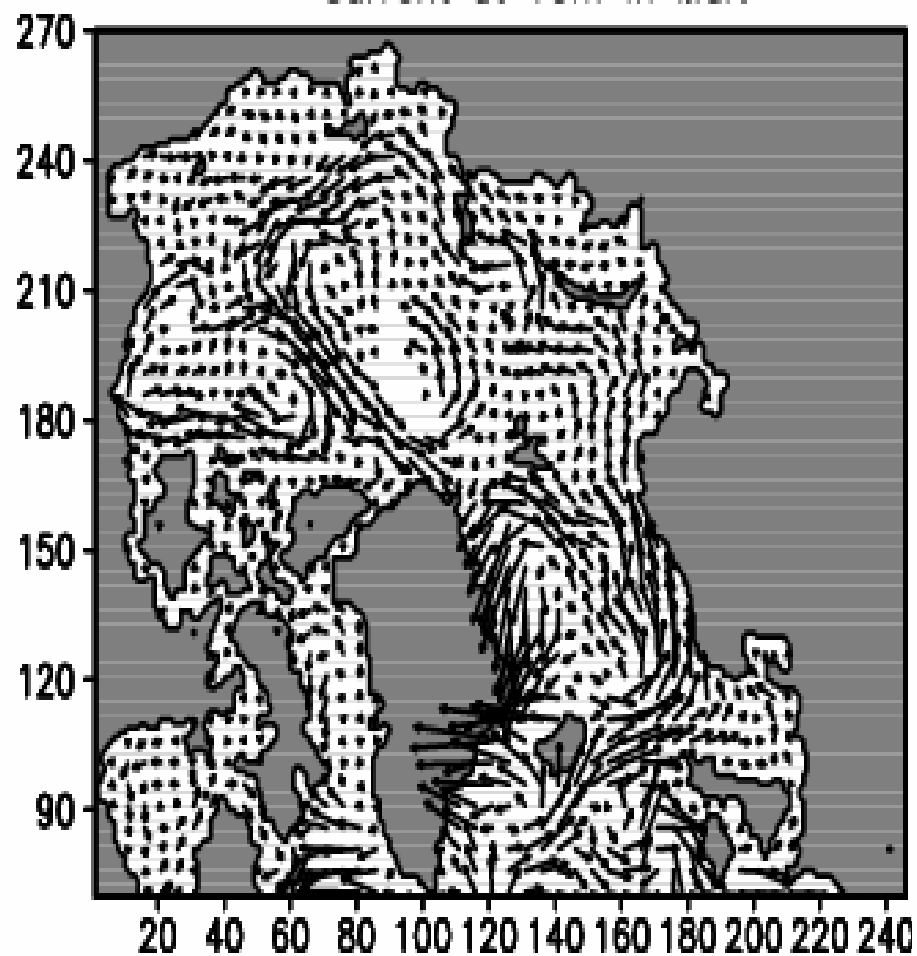
GrADS: COLA/IGES



GrADS: COLA/IGES

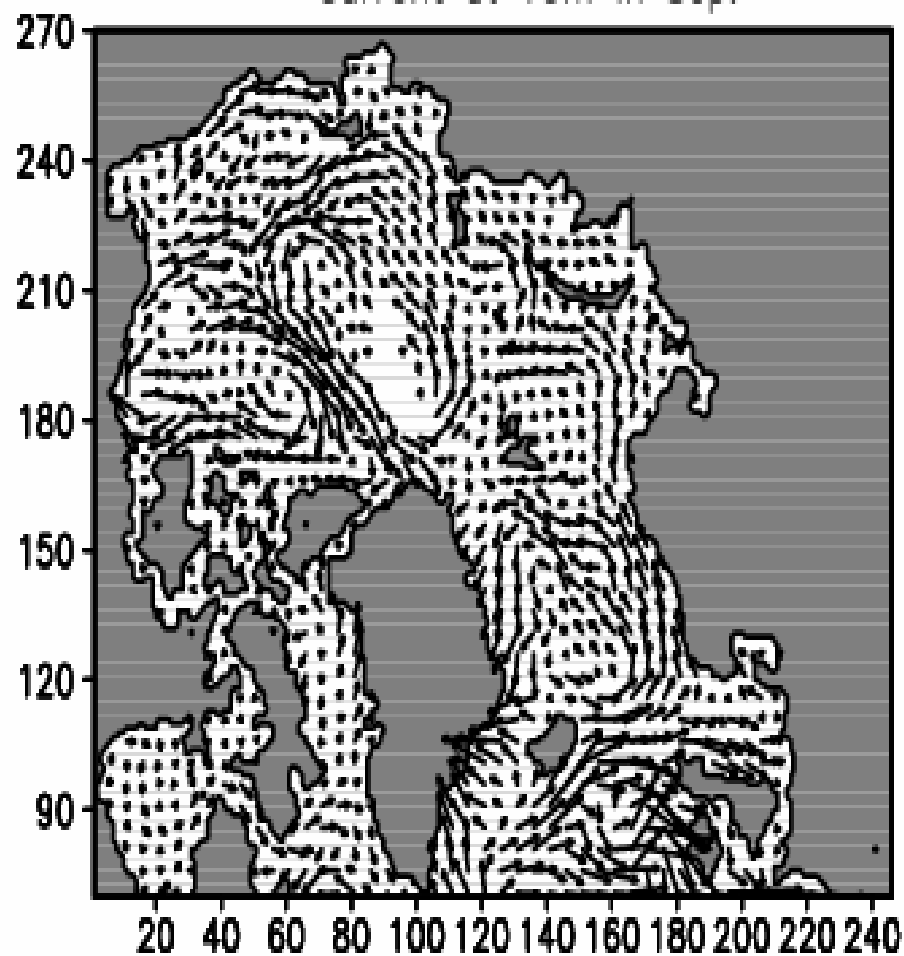


Current at 10m in Mar.

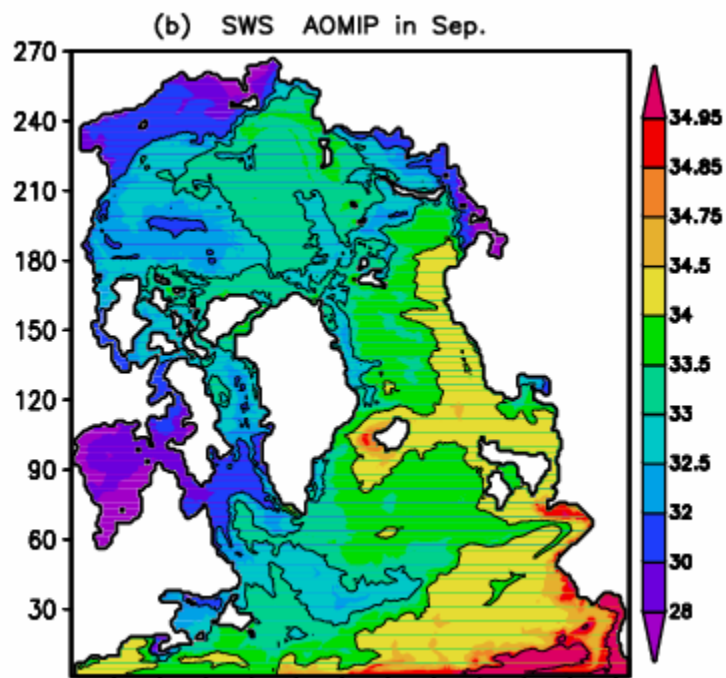
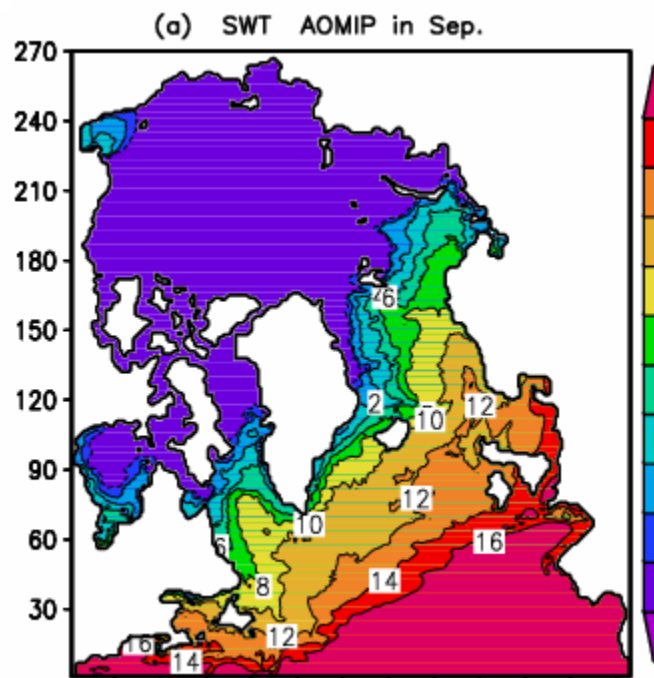
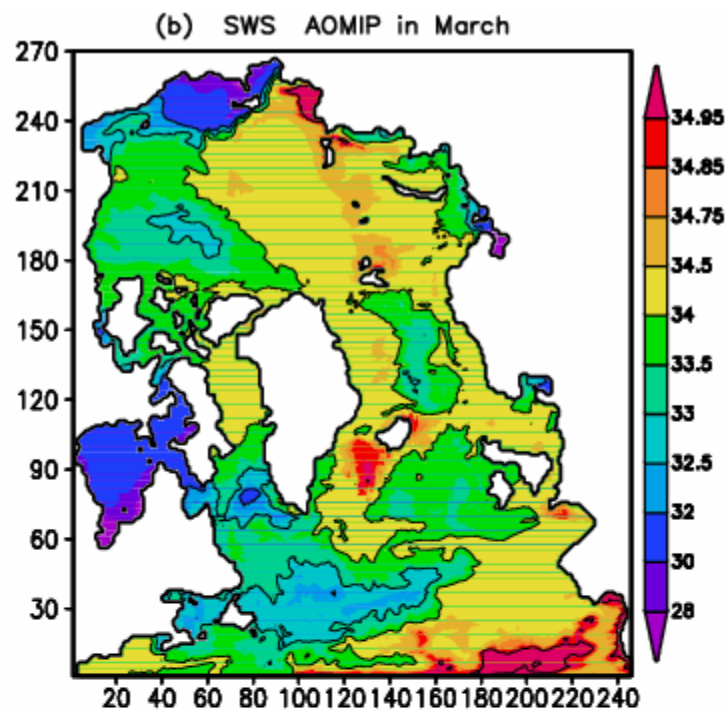
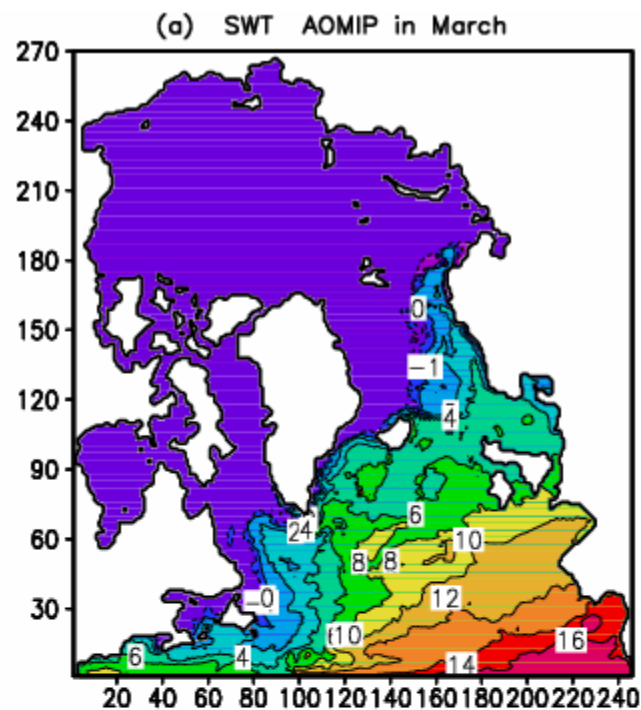


0.1

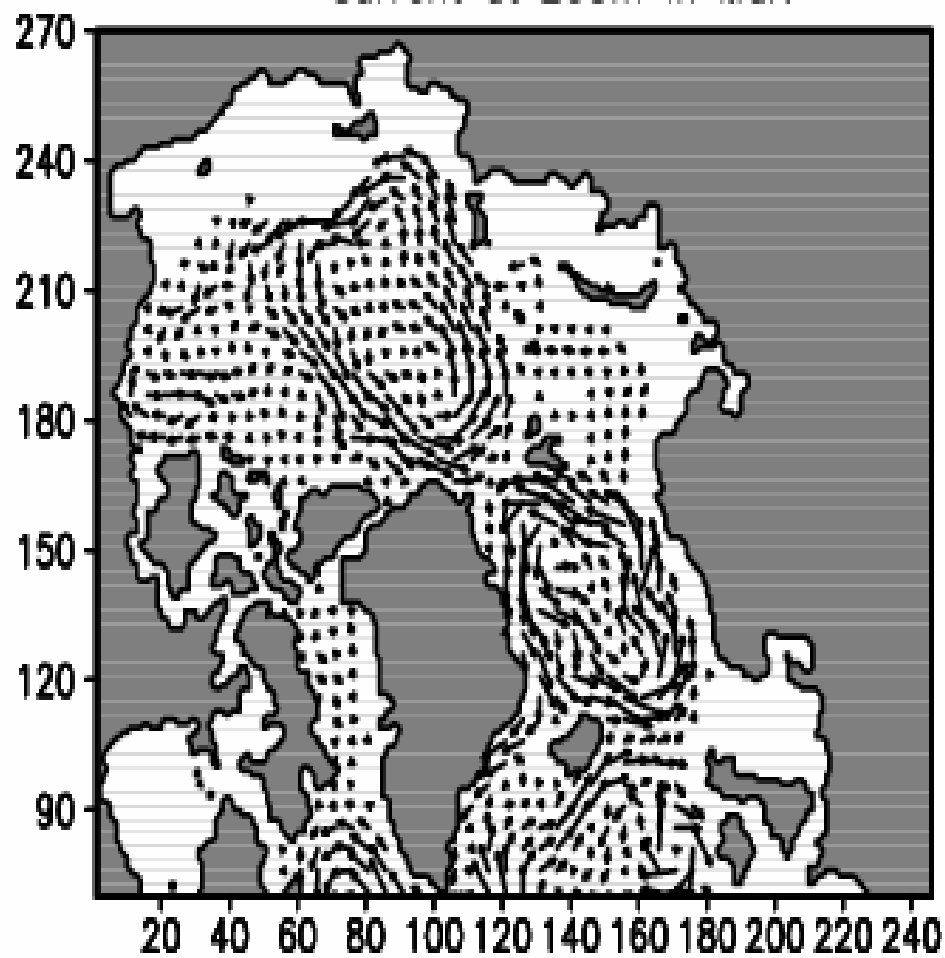
Current at 10m in Sep.



0.1

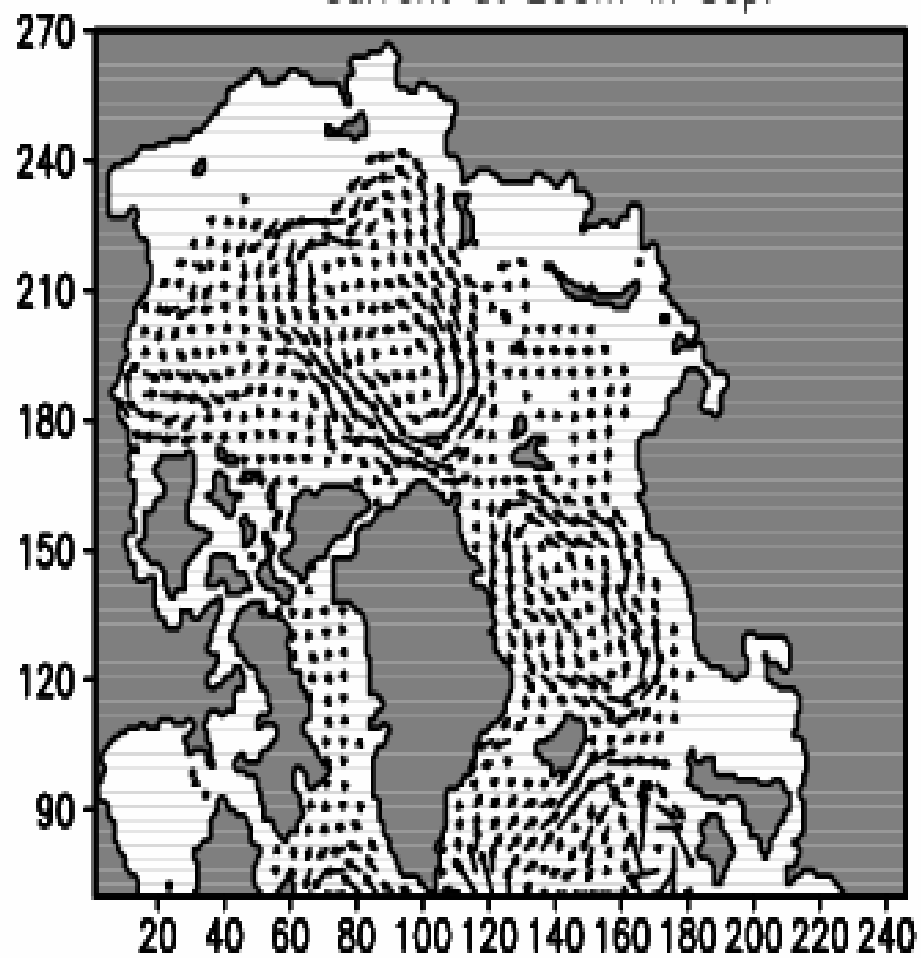


Current at 200m in Mar.

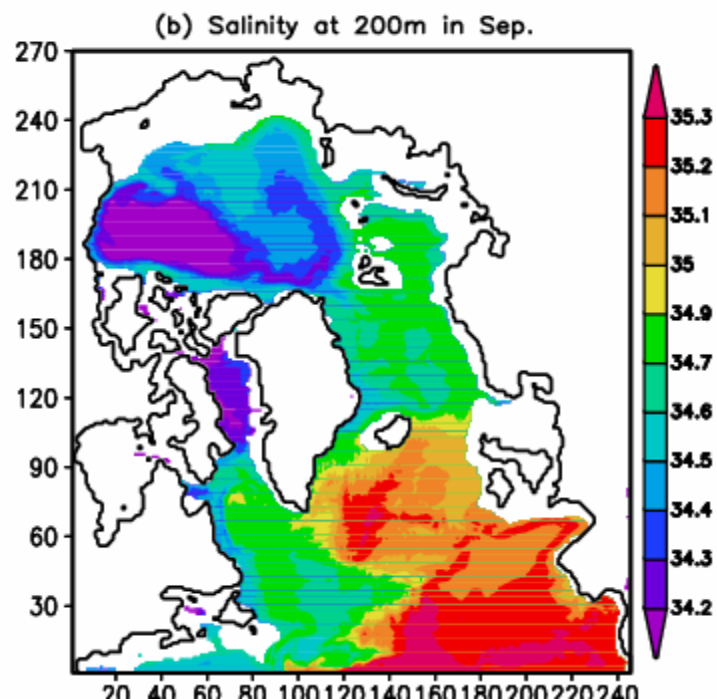
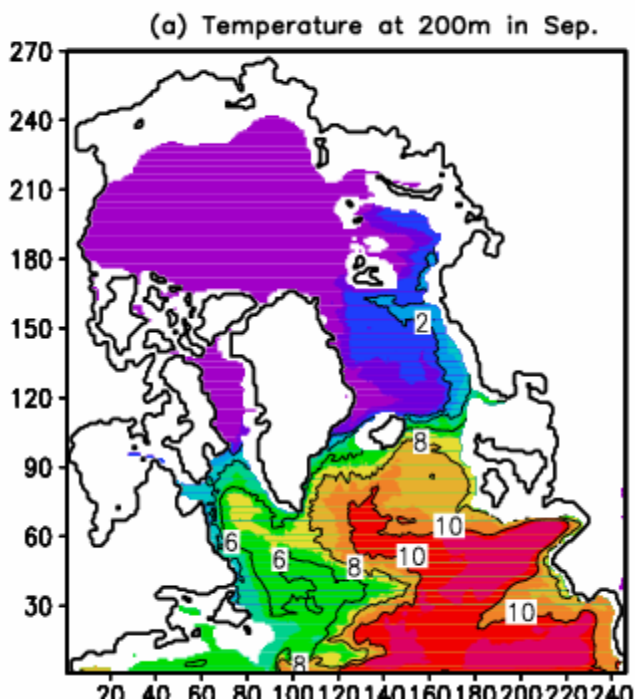
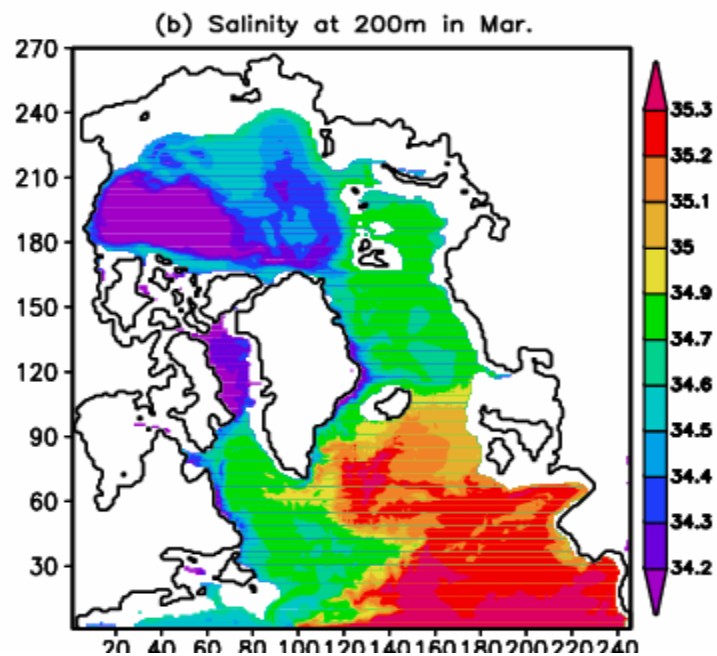
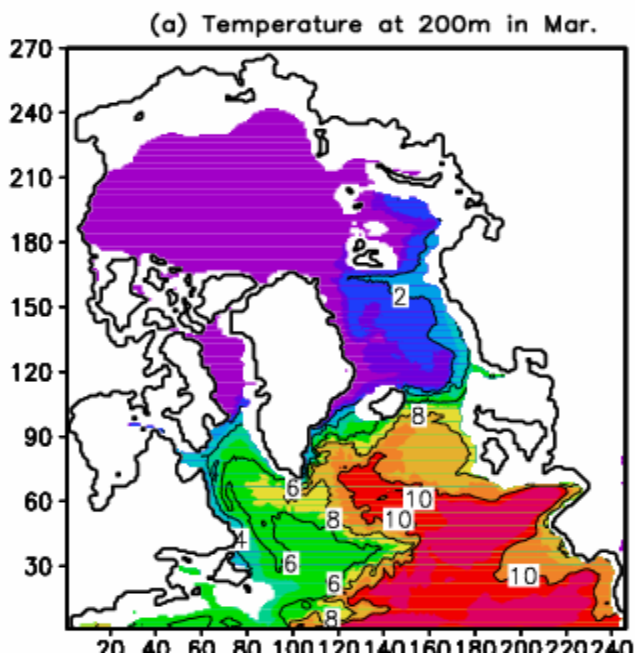


0.1

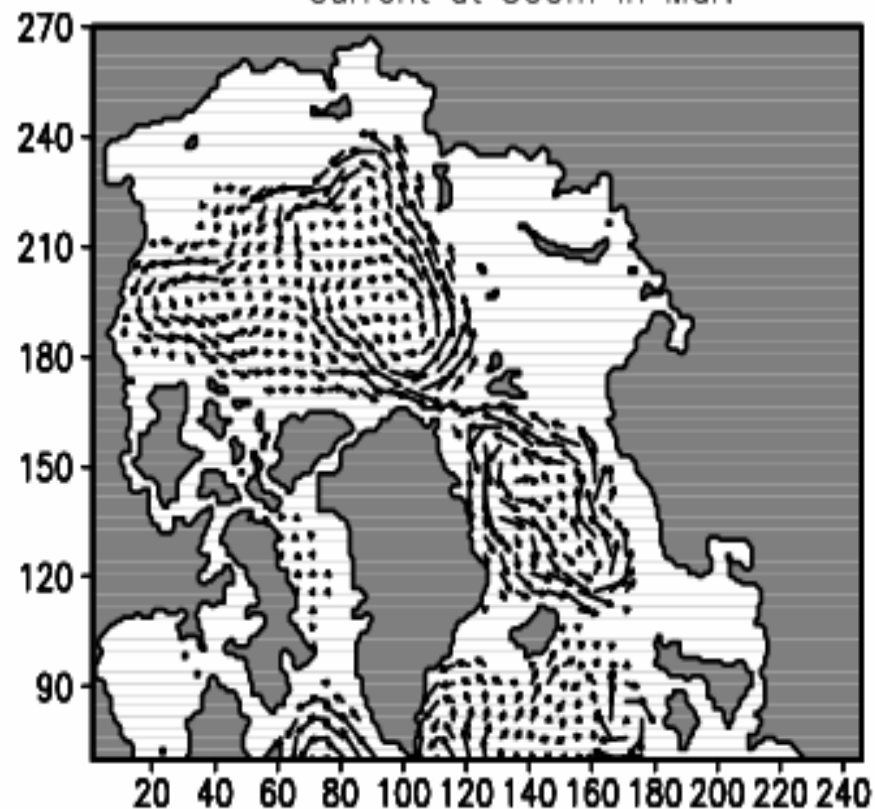
Current at 200m in Sep.



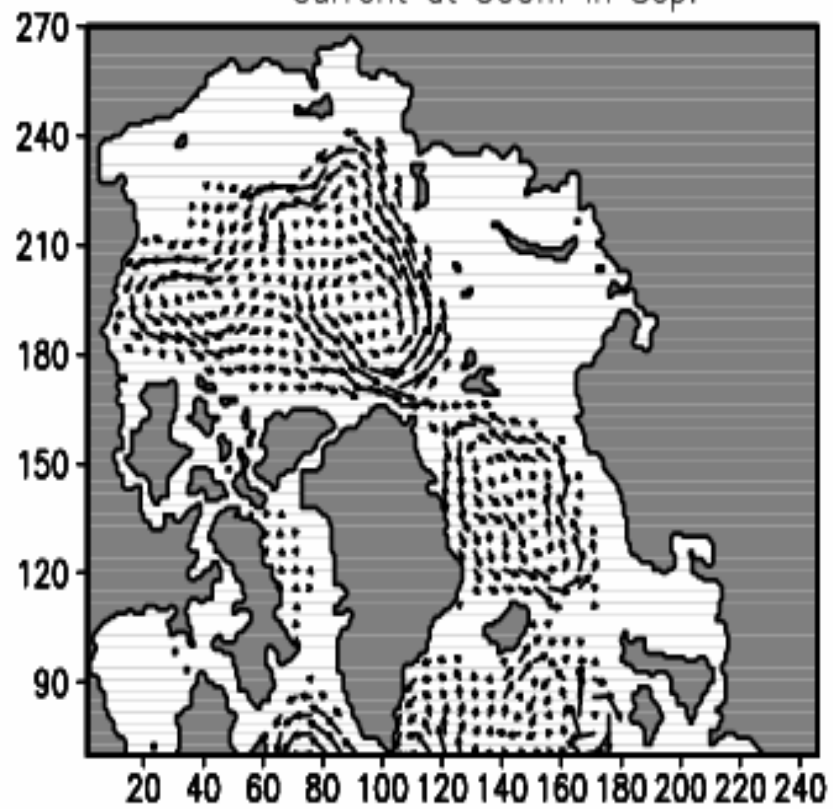
0.1



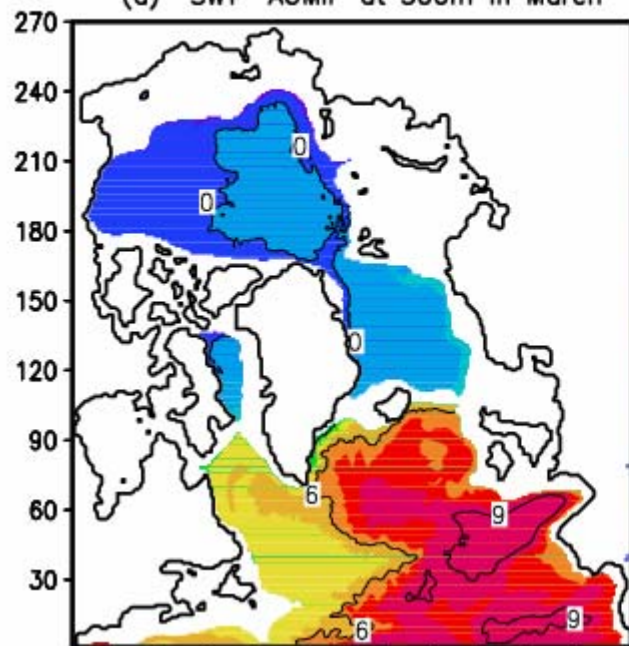
Current at 500m in Mar.



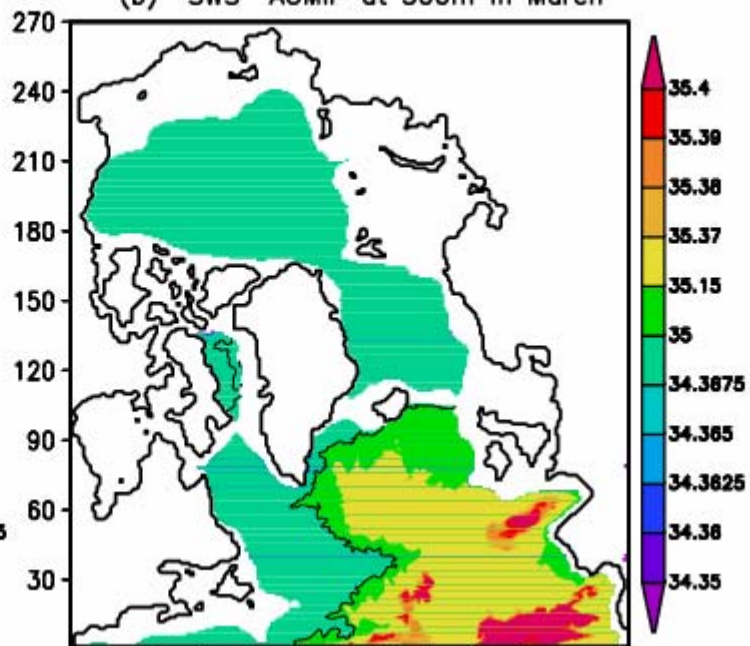
Current at 500m in Sep.



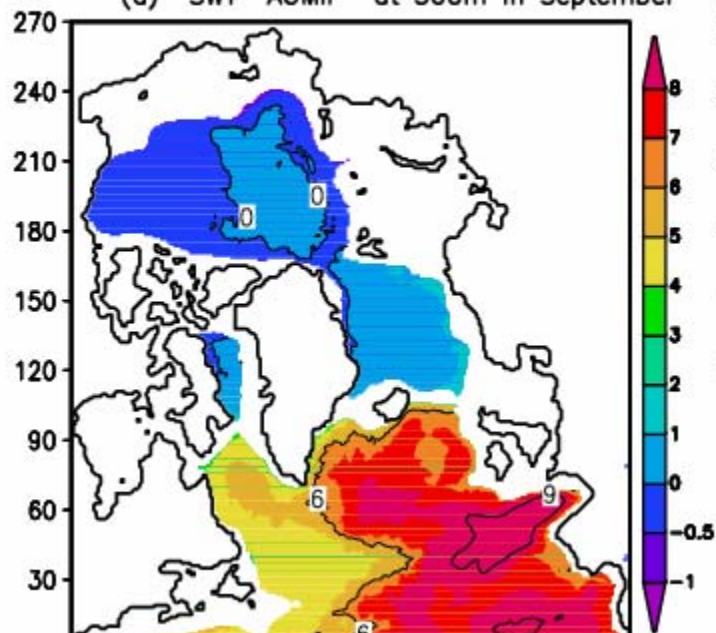
(a) SWT AOMIP at 500m in March



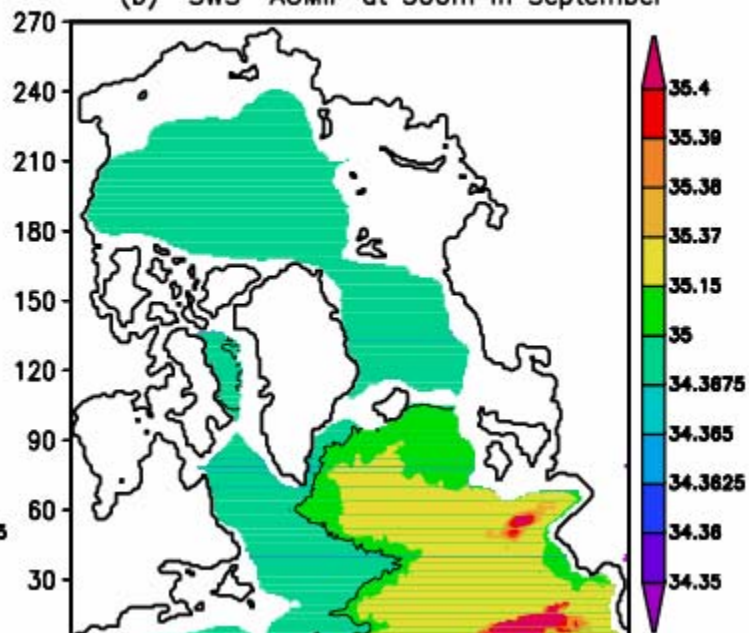
(b) SWS AOMIP at 500m in March

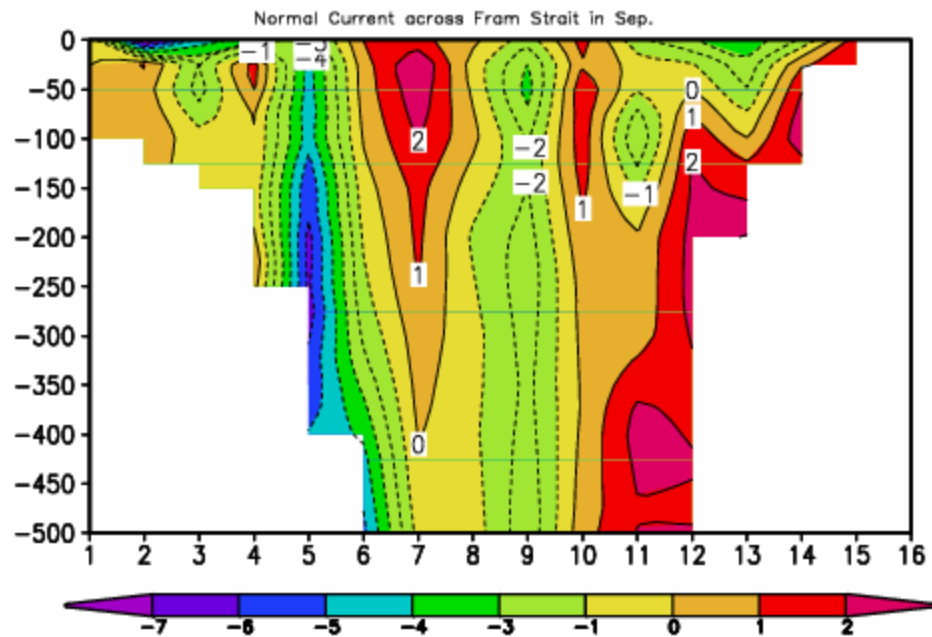
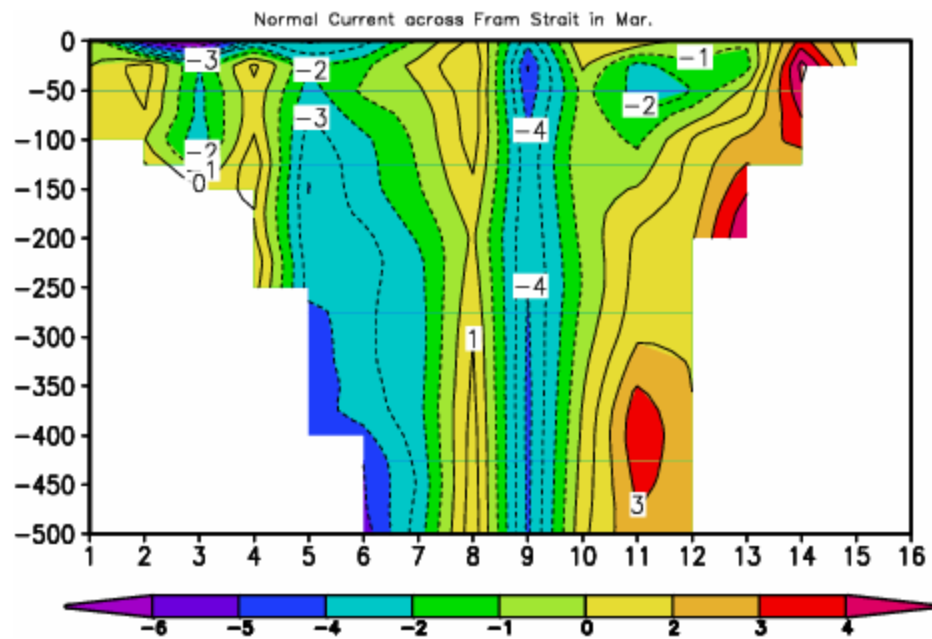


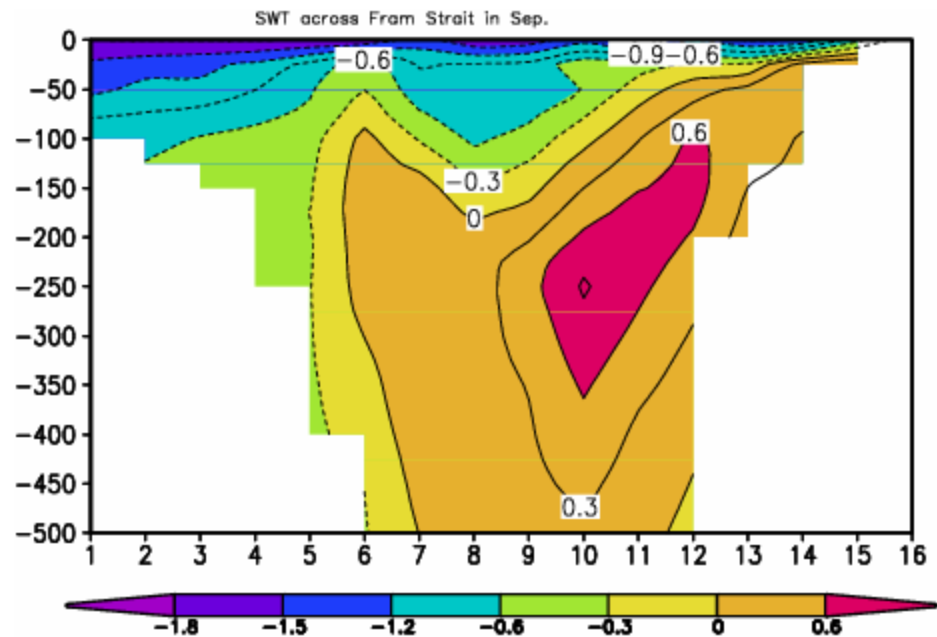
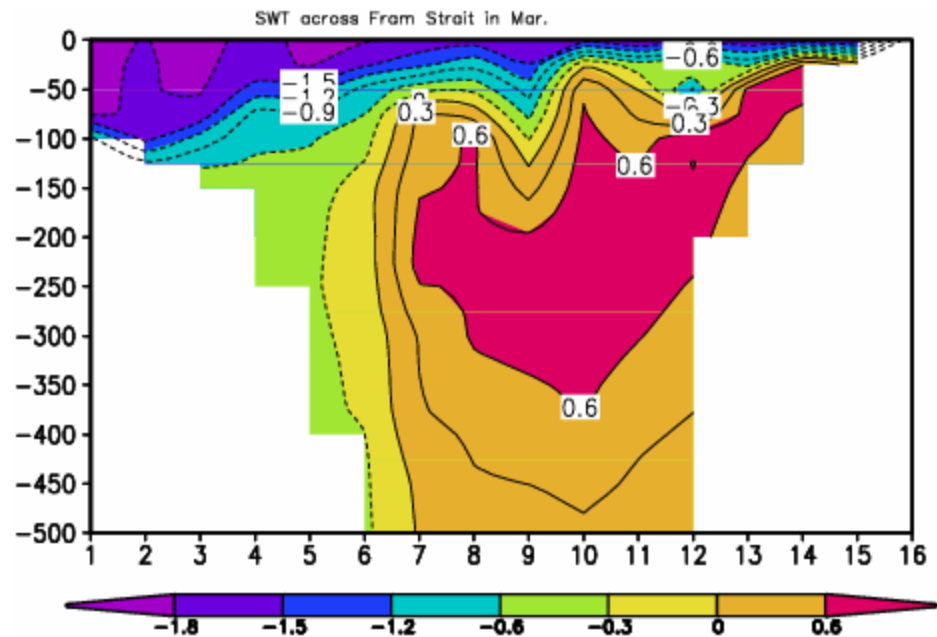
(a) SWT AOMIP at 500m in September



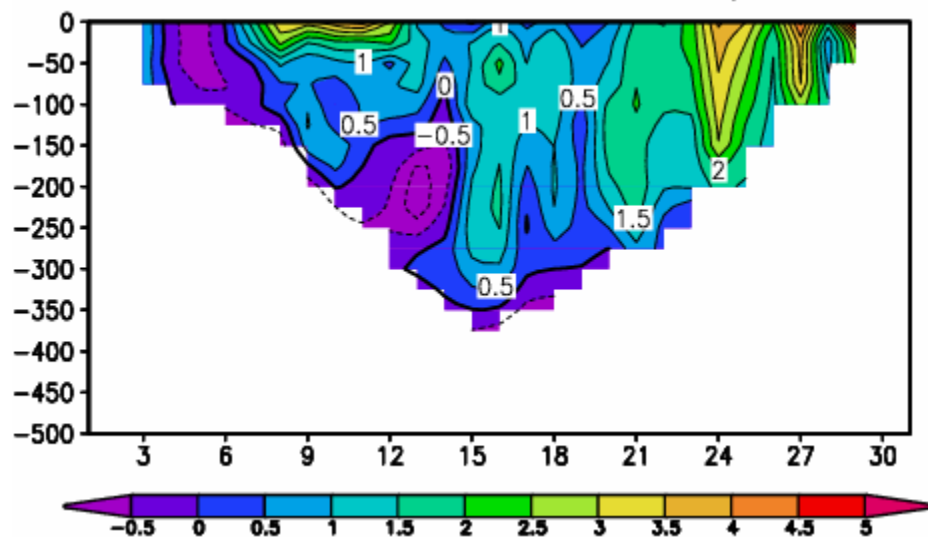
(b) SWS AOMIP at 500m in September



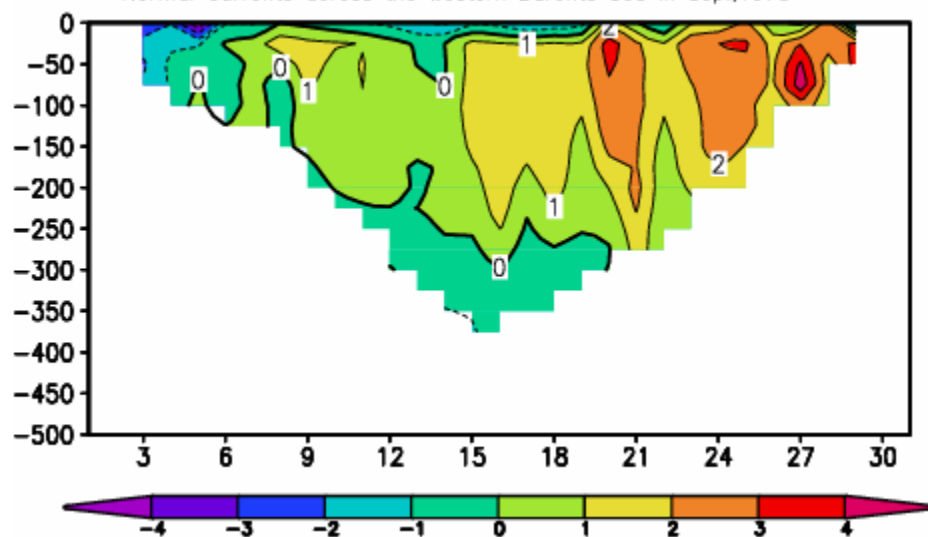


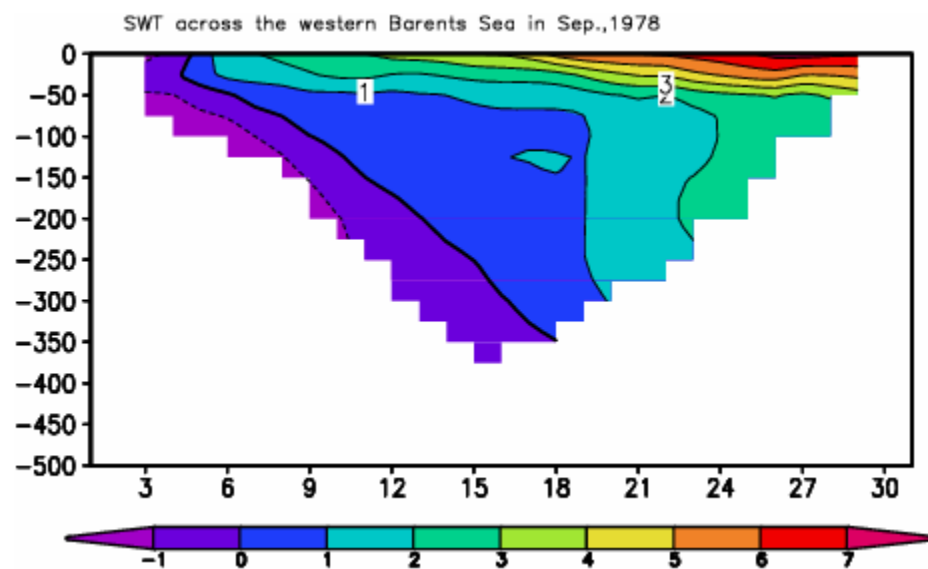
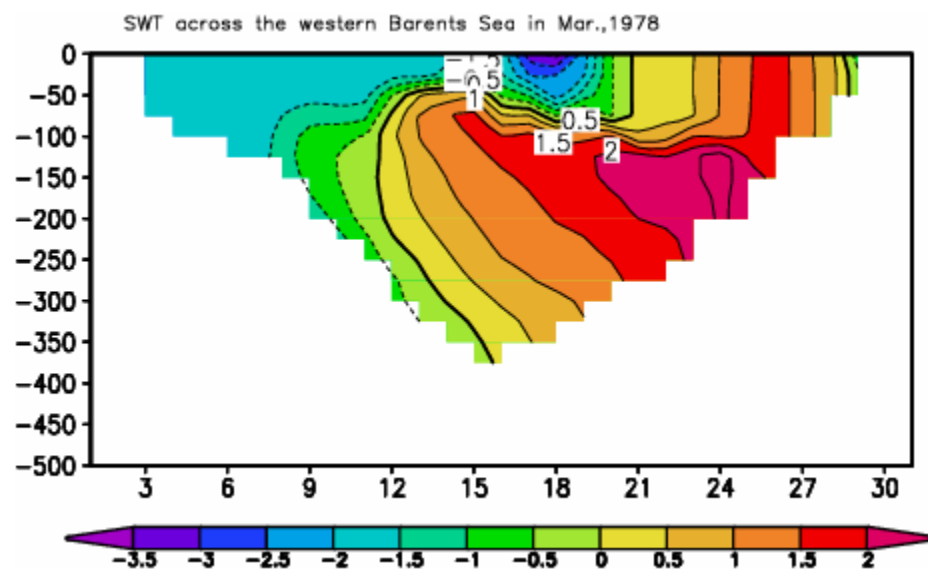


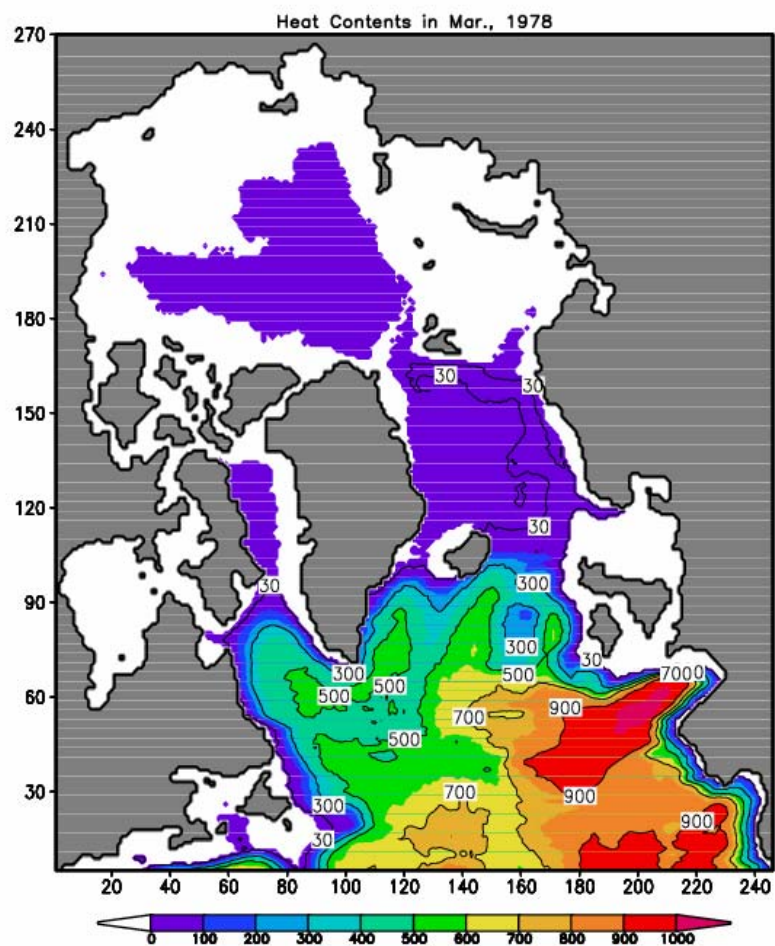
Normal Currents across the western Barents Sea in Mar., 1978



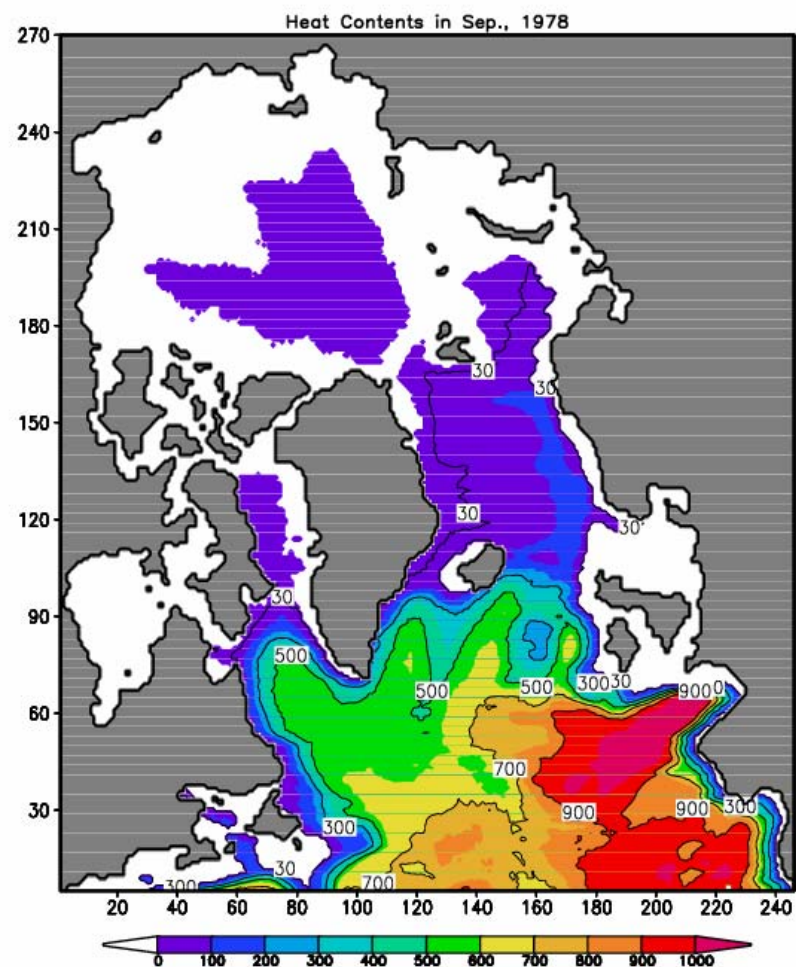
Normal Currents across the western Barents Sea in Sep., 1978



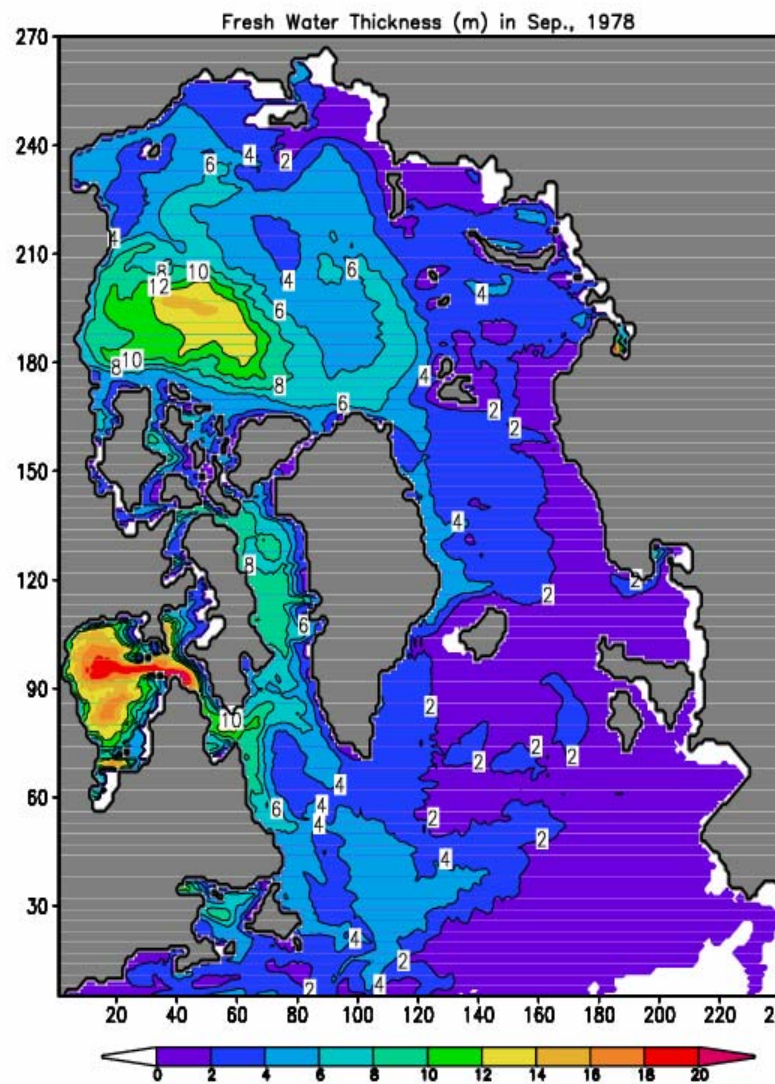
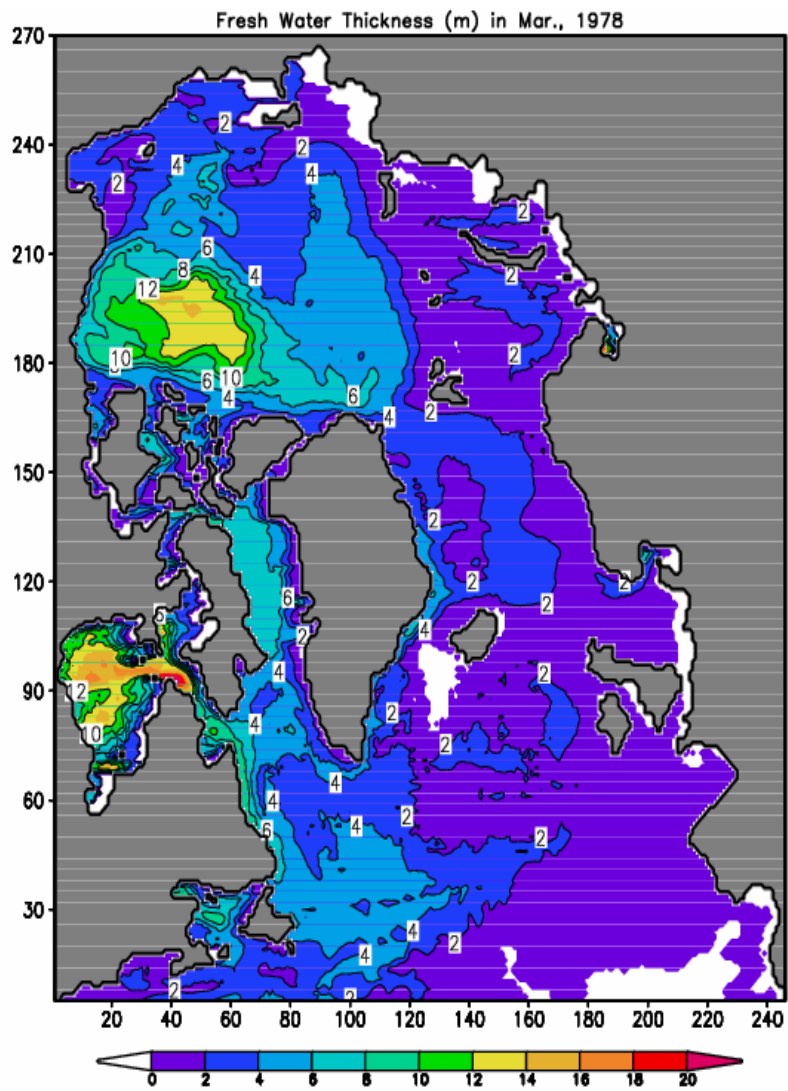




CMARS: POL & LINES



CMARS: POL & LINES



Summary

1. SLP-derived wind produces stronger surface anticyclonic circulation, and smoother cyclonic circulation at 500m than those derived from the NCEP wind.
2. Atlantic Water intrusion to the Eurasian Basin in March is stronger than in September, while salinity has no such evidence.