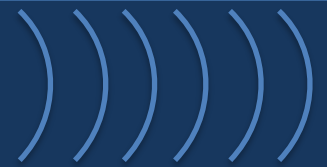


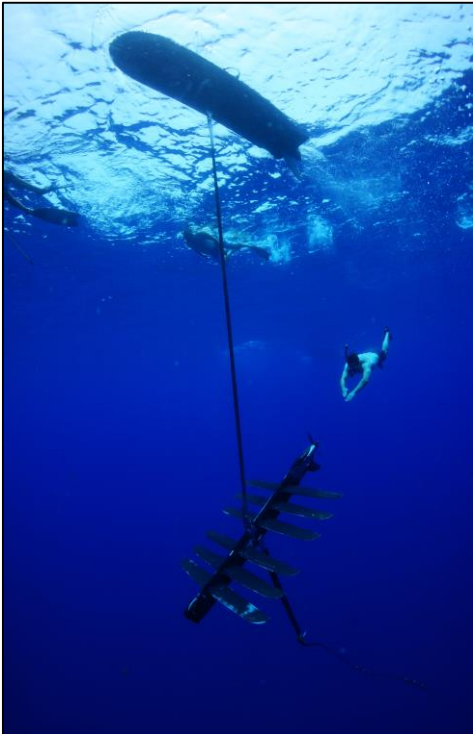
Woods Hole
CMR
Entrepreneur Forum



Briefer perspective



Persistent Surveillance Systems

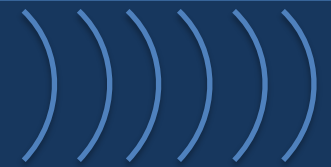


Port Security and Seabed Systems



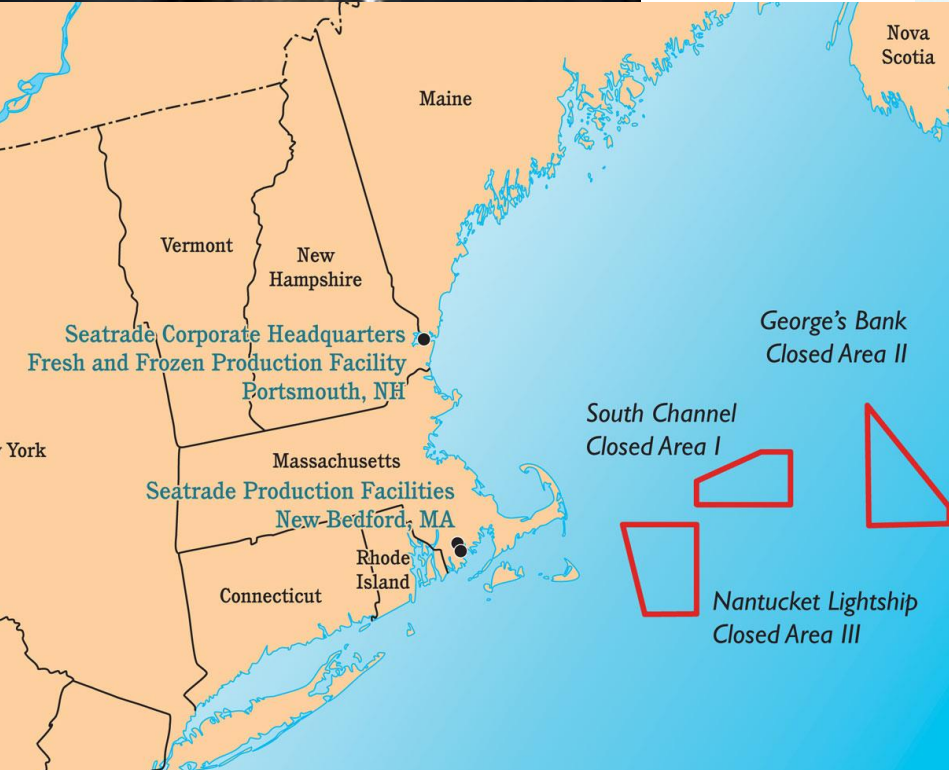
ThayerMahan provides flexible, cost-effective, ocean surveillance

Briefer perspective

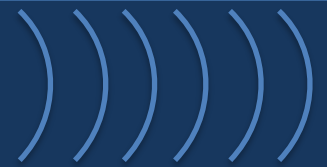


Ocean data as a service

Challenges



Challenges

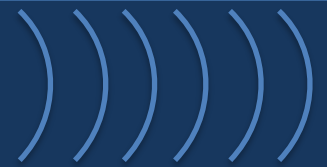


Capacity crisis?



We need new options that can be implemented – soon!

Opportunities



12 MW capacity
220-meter rotor
107-meter long blades
260 meters high
67 GWh gross AEP
63% capacity factor
38,000 m² swept area
Wind Class IEC: IB

Generates **double the energy** as previous GE Haliade model

Generates almost **45% more energy** than most powerful wind turbine available on the market today

Will generate enough clean power for up to **16,000** European households per turbine, and up to **1 million** European households in a 750 MW configuration windfarm

GE

HALIIDE-X 12 MW

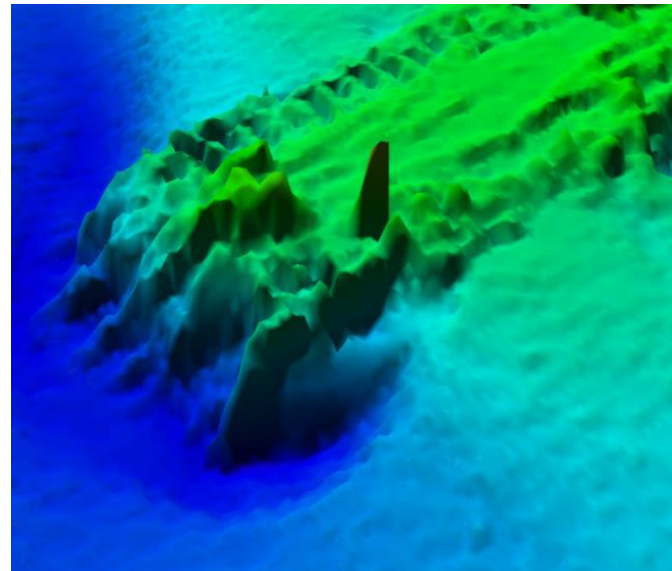
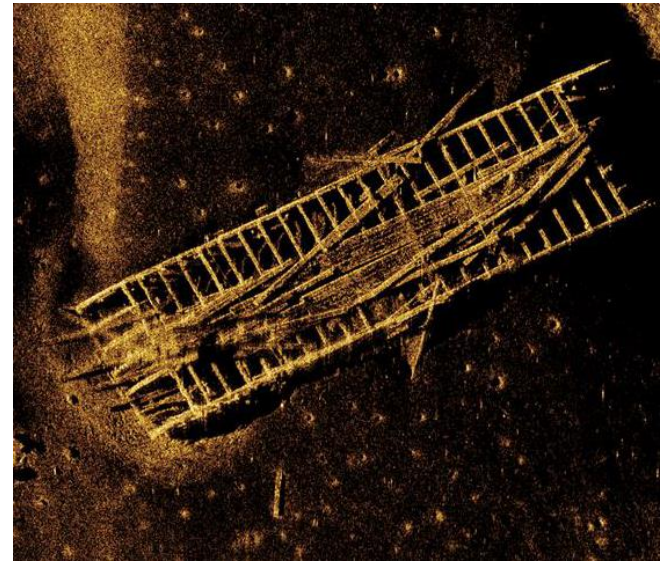
GE Renewable Energy is developing **Haliade-X 12 MW**, the biggest offshore wind turbine in the world, with **220-meter rotor**, **107-meter blade**, leading capacity factor (**63%**), and **digital capabilities**, that will help our customers find success in an increasingly competitive environment.

1063 ft
324 m

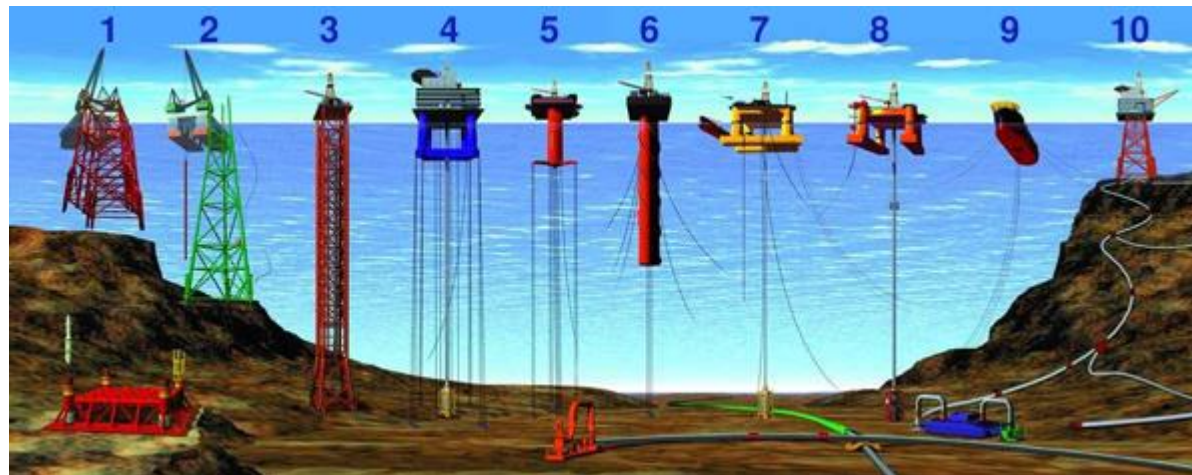
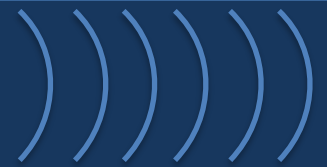
853 ft
260 m

1046 ft
319 m

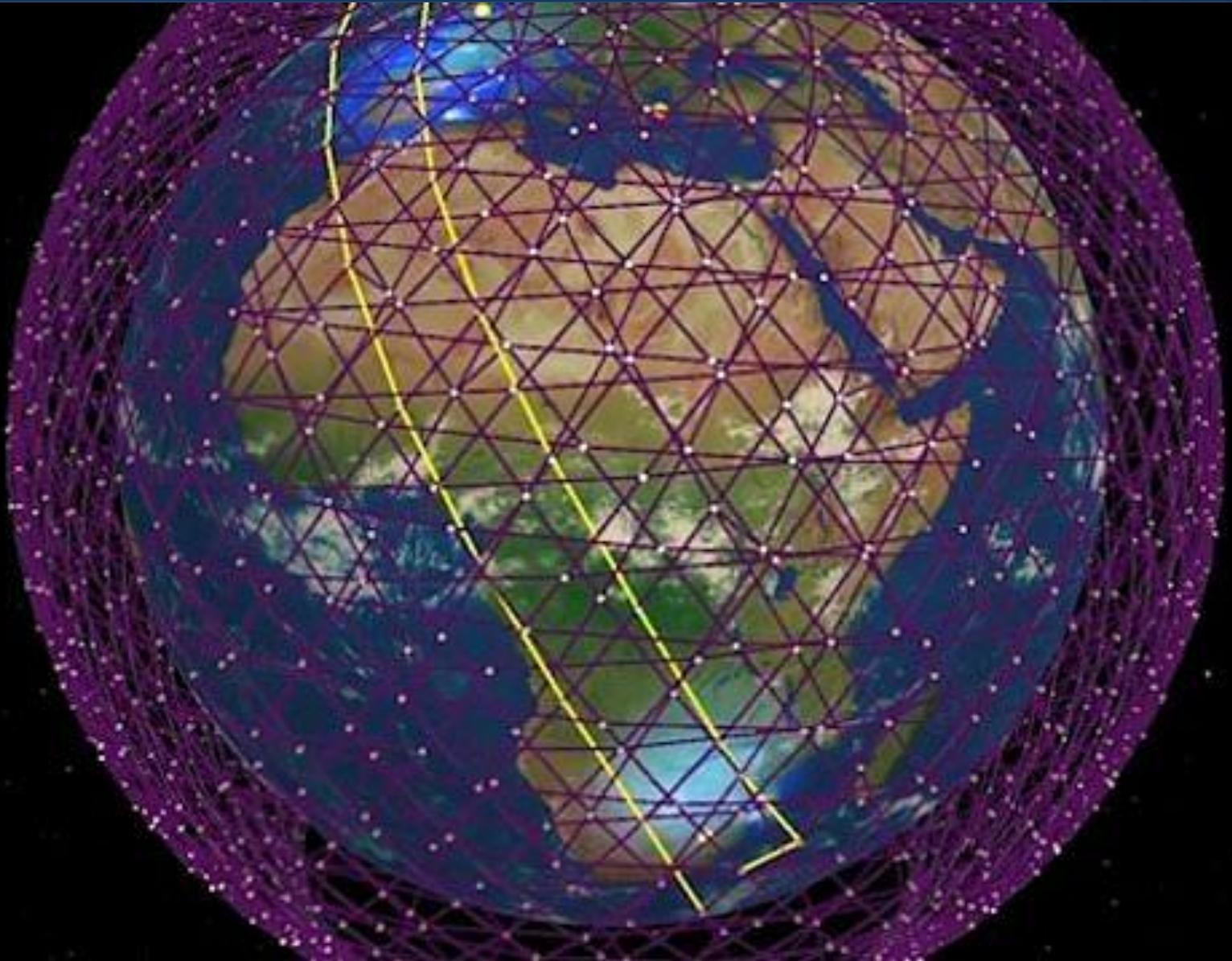
Eiffel Tower Haliade-X 12 MW Chrysler Building



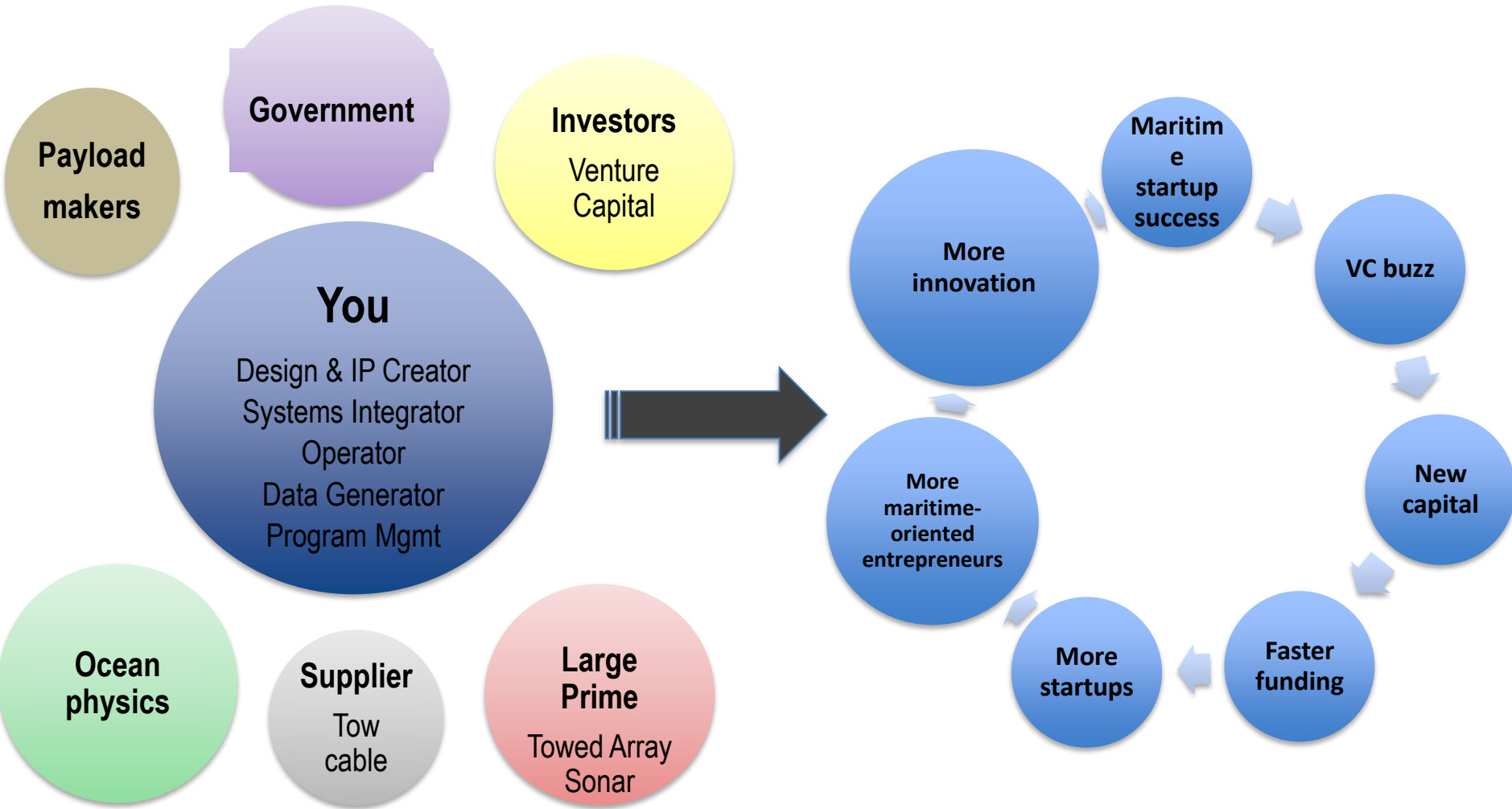
Opportunities



Maritime communications revolution



Blue Tech Entrepreneurs' ecosystem



A viable path to maritime innovation

Discussion

