

Intelligent Systems at Johns Hopkins APL

26 August 2020

Ashley J. Llorens
Chief, Intelligent Systems Center
Johns Hopkins Applied Physics Laboratory
jhuapl.edu/isc

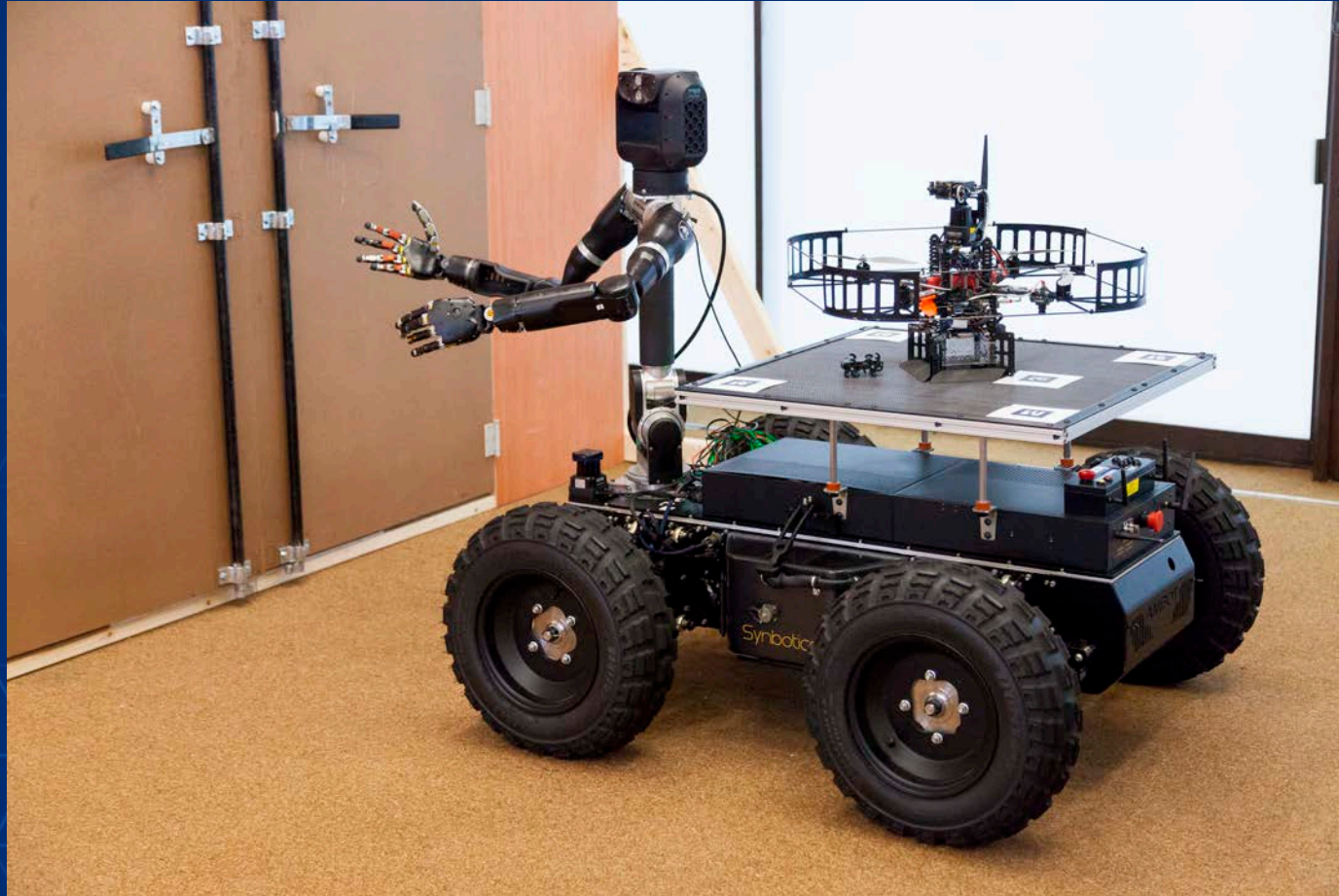
The Intelligent Systems Center at Johns Hopkins APL



Humans up-close: An AI-enabled handshake



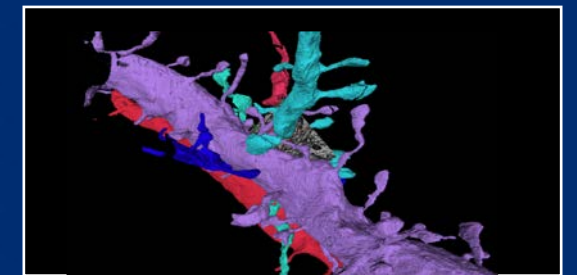
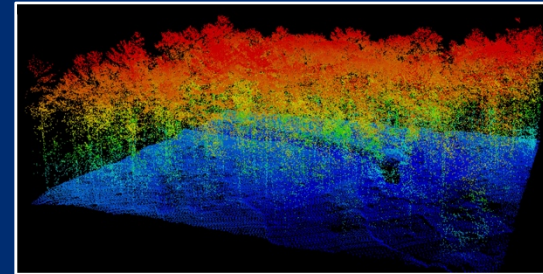
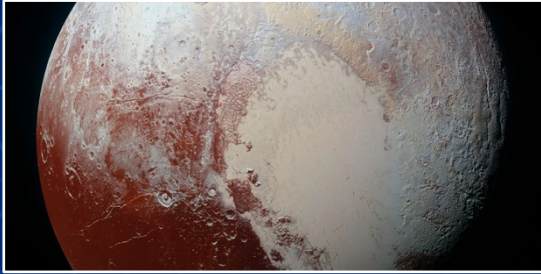
Humans at a distance: Autonomous Robot Teams



Humans at a distance: Autonomous Robot Teams



Intelligent Systems for Every Mission



Emerging Applications in Maritime AI & Autonomy

UAV



USV



Manned



MUMT in Close Proximity

MUMT Beyond Line of Sight



MUMT with Tactical Platforms



Automatic Target Recognition for Mine Countermeasures

APL Tech Transfer

- APL seeks commercialization to increase impact of tech innovations for our sponsors and the public.
- Our status as a University Affiliated Research Center requires careful consideration of commercial partners.
- **Explore partnerships with APL:**
 - www.jhuapl.edu/techtransfer



TWENTY-YEAR CUMULATIVE DATA (1999–2019)

4,169

intellectual property assets
disclosed

489

U.S. patents issued

1,799

U.S. provisional patent
applications filed

1,008

U.S. non-provisional patent
applications filed

760

license agreements executed

50

new companies created



JOHNS HOPKINS
APPLIED PHYSICS LABORATORY