

Ørsted Offshore

A line of offshore wind turbines in the ocean under a blue sky. The turbines are white with yellow bases and are arranged in a perspective line from the foreground to the horizon. The sky is a clear, bright blue with a few wispy clouds. The water is a deep blue with some ripples.

Leading the energy transformation

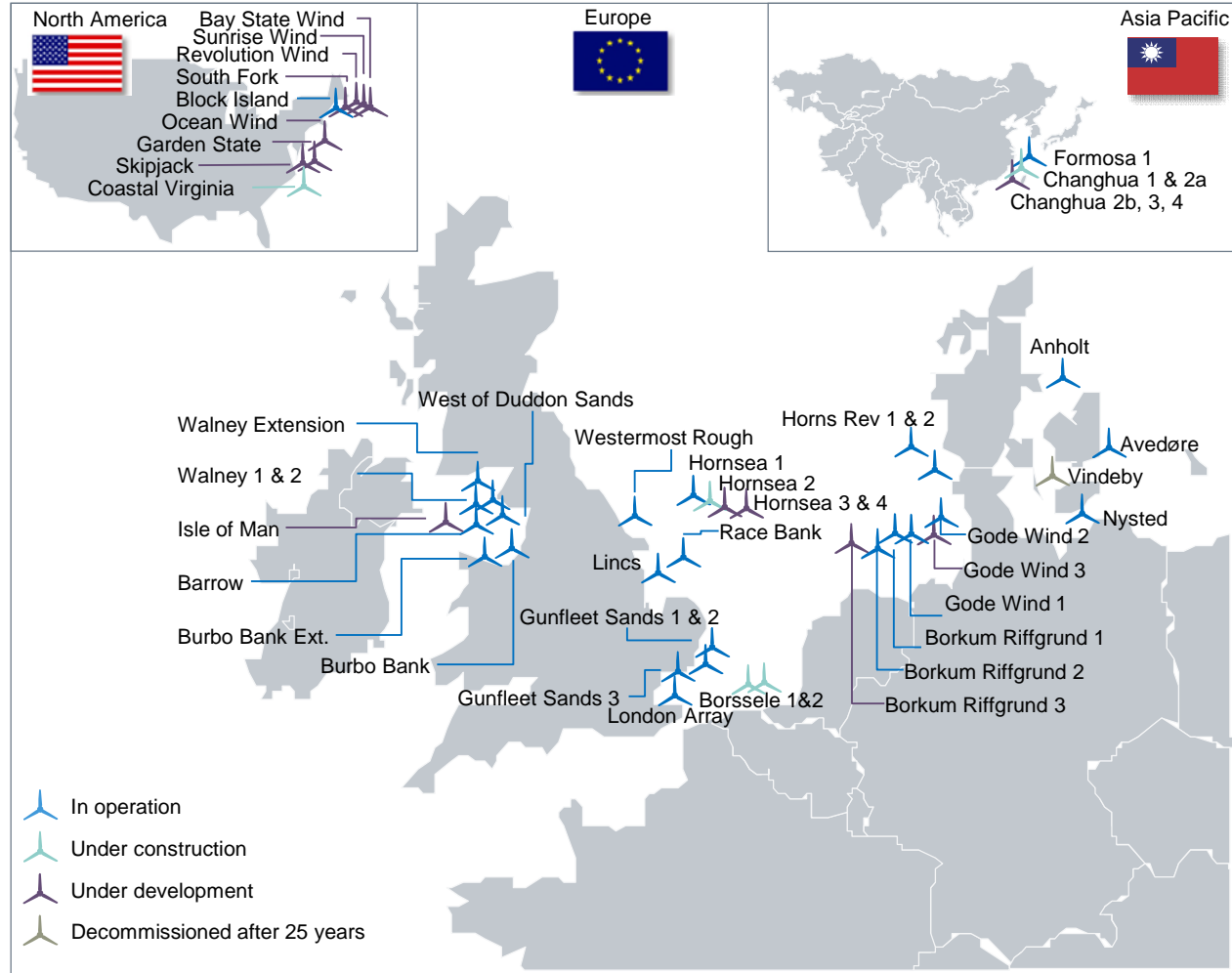
Ørsted

August 2020

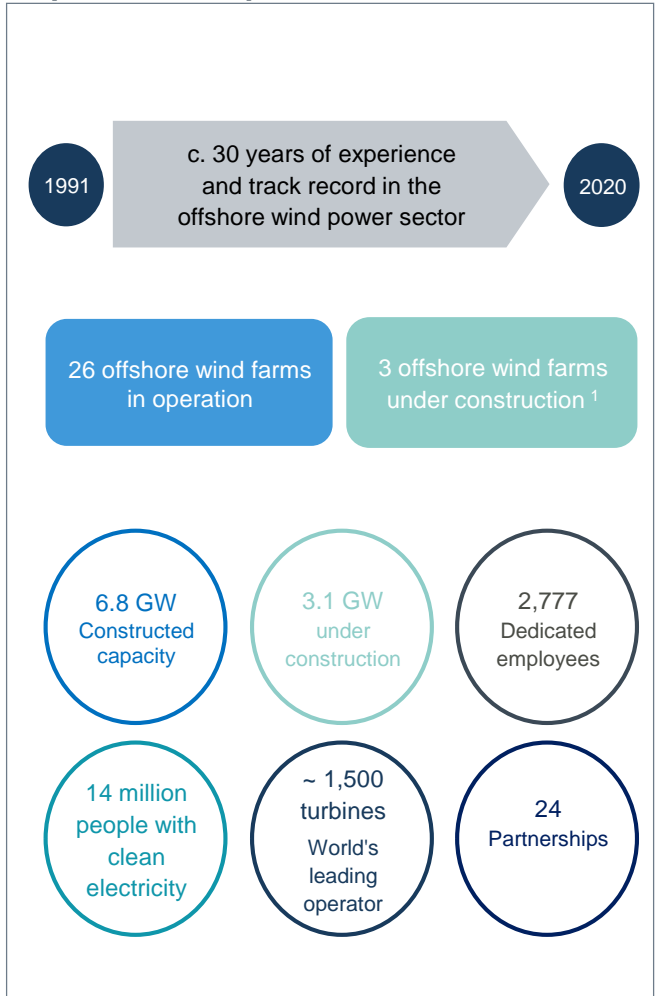
Ørsted Offshore overview

Global market leader in offshore wind with c.30 years of experience

Ørsted offshore wind global footprint



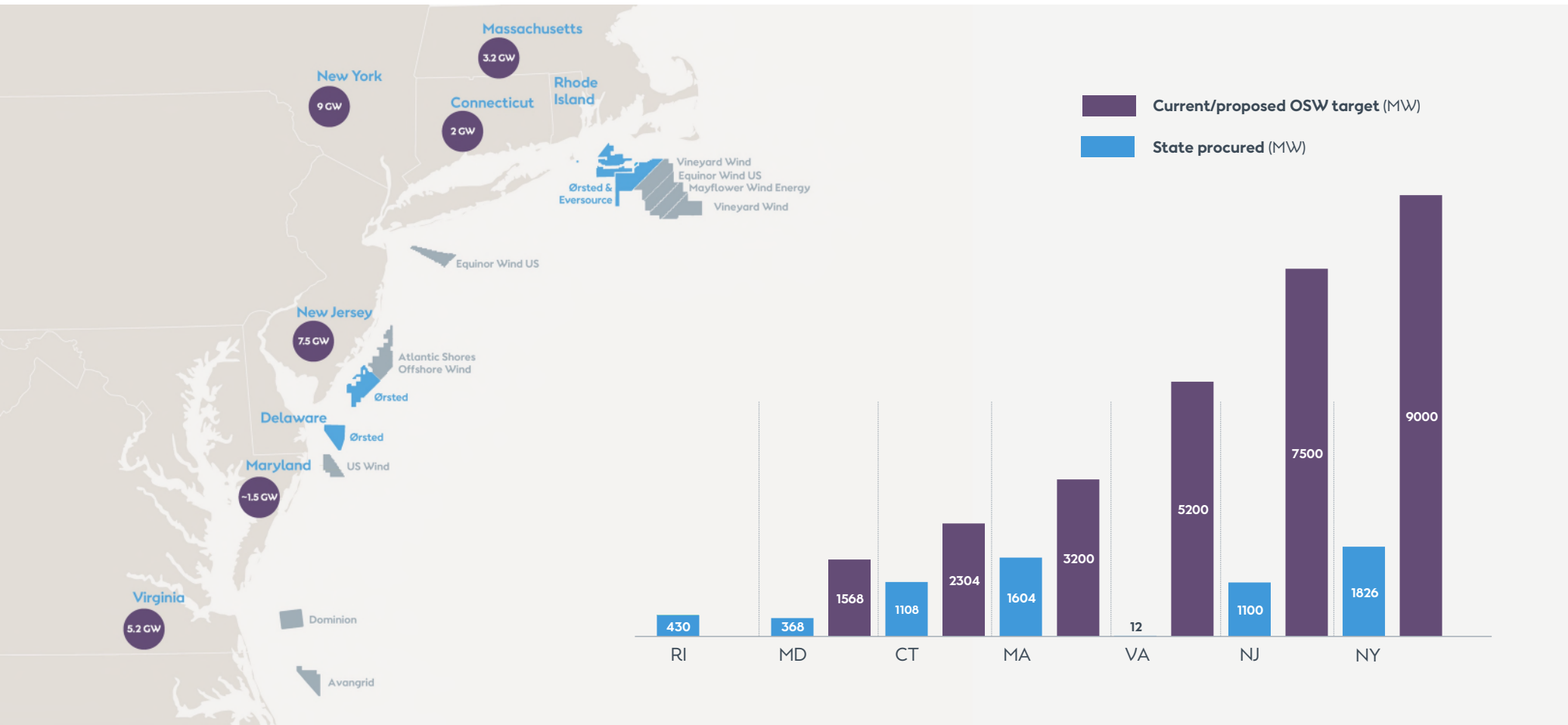
Unparalleled experience and track record



Note 1: In addition to these wind farms, Ørsted is constructing the 12MW Coastal Virginia demonstration project in the US on behalf of Dominion Energy

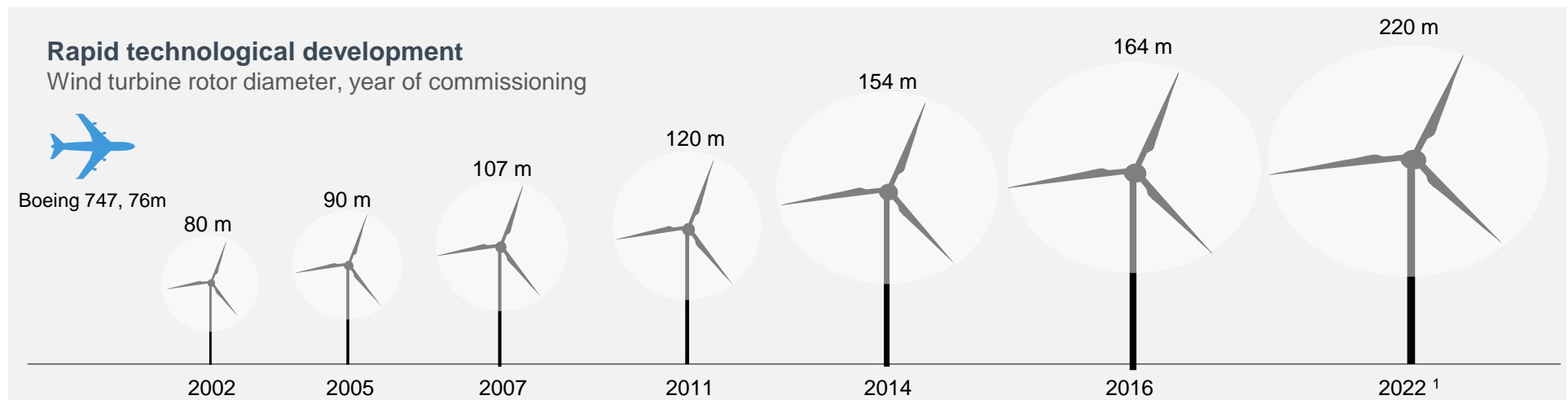
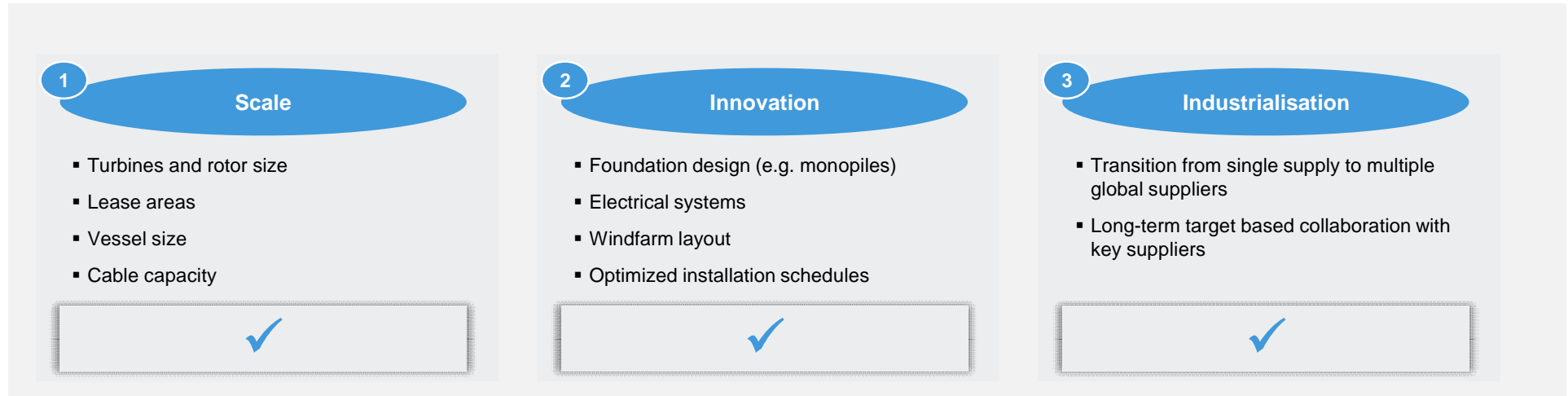
Offshore wind market on the East Coast

Potential for 25+ GW



At the forefront of making the industry cost competitive

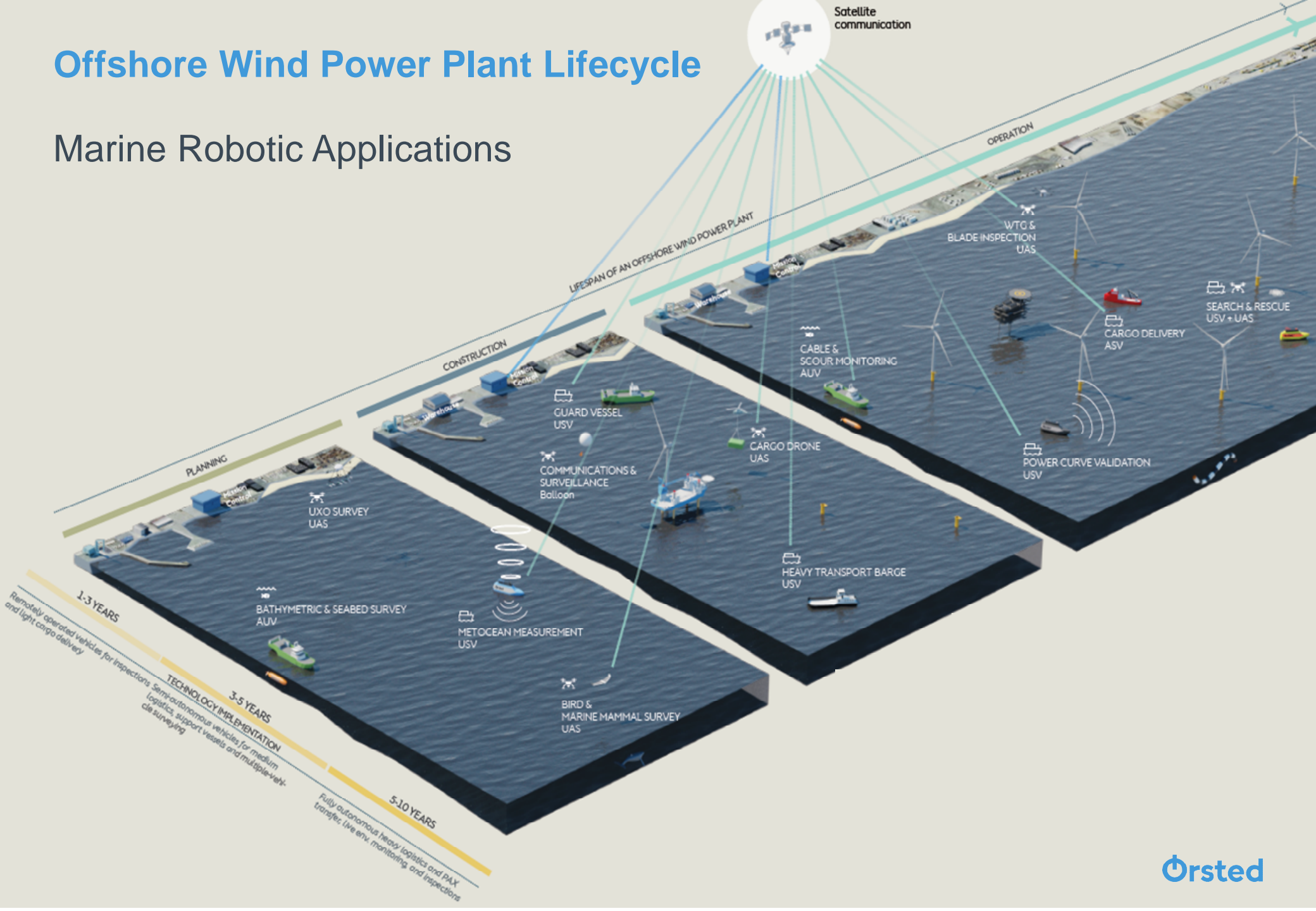
Multiple levers to drive down cost in offshore wind



1. Ørsted selected GE Renewable Energy as the preferred turbine supplier for two of its US offshore wind farms which marks the world's first commercial deployment of GE's Haliade-X 12MW offshore wind turbine

Offshore Wind Power Plant Lifecycle

Marine Robotic Applications



Latest Ørsted application of marine robotics in the U.S.

ECO-PAM: Ecosystem and Passive Acoustic Monitoring Project

Advancing technology for protection and conservation of North Atlantic right whales



Slocum Glider

Rutgers:

- 2 years of Slocum Glider Missions
- Suite of passive acoustic and oceanographic sensors
- Includes VEMCO receivers (fish tag detection)
- Characterize habitat for NARWs and develop predictive models
- Contribute oceanographic measurements in real time to NOAA that improves real-time weather forecasts including major storm events
- Integration with Mysticetus and Whale Alert

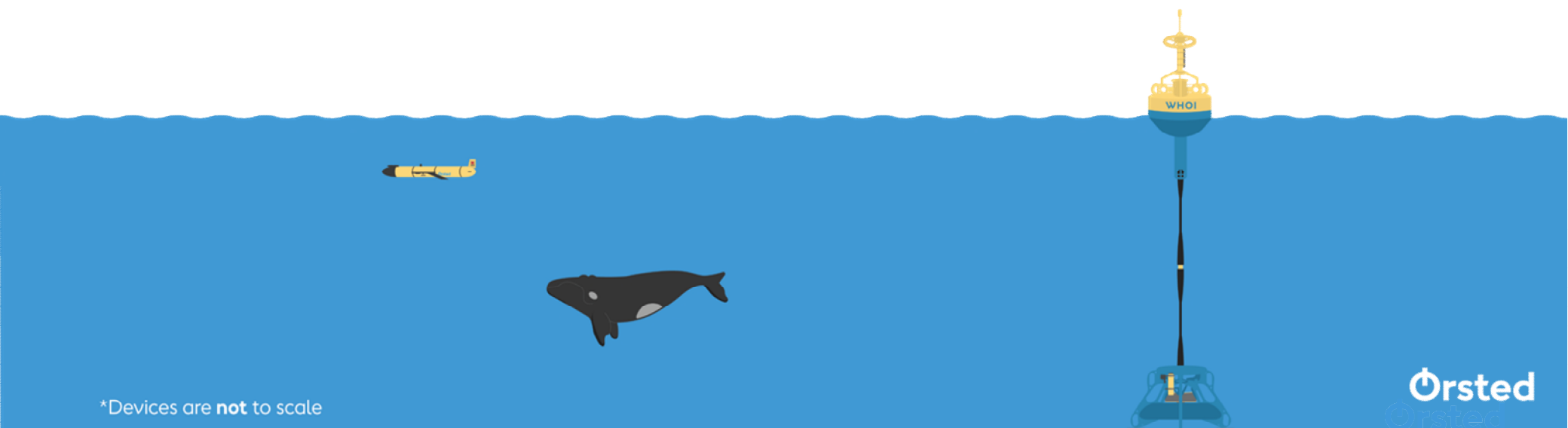
WHOI DMON Buoy

WHOI:

- 2 near real time WHOI Buoys for 2 years (NJ and New England)
- Includes VEMCO receivers for detecting tagged fish
- R&D to advance sensor capability to be able to directionalize on calls
- Integration with Mysticetus and Whale Alert

URI:

- 1 test buoy (Spring 2021)
- Designed by students in collaboration with researchers
- Will advance sensors capability to directionalize on calls



*Devices are **not** to scale



The Innovation Hub in Rhode Island will act as a bridge between Ørsted and the innovation ecosystem on the U.S. East Coast




Ørsted to Open New Innovation Hub in Rhode Island to Leverage Local Innovation Ecosystem for its Global Offshore Portfolio

0115.2020 14:00



- Established with the objective to identify, develop and where appropriate finance **start-ups** with a focus on **next-generation technology and innovation** within the OSW industry
- Will actively **scout** for **innovation leads** and **new early stage suppliers** and act as a bridge between Ørsted and innovative solutions from the external ecosystem
- Located in **Rhode Island** at the **Providence CIC** workspace; a location chosen to enable close contact with the innovation **ecosystem on the U.S. East Coast**, in particular related to **blue tech**

Contact: Neil Hamel - NEIHA@orsted.com

A child in an orange jacket is seen from behind, holding a string to fly a colorful kite (red, blue, green, yellow) against a clear blue sky. The kite is high in the air, and the string extends from the child to the kite. The overall scene is bright and positive, symbolizing hope and progress.

**Let's create a world
that runs entirely
on green energy**

Ørsted