

Our industry and the road to intelligent robotics

Matthew Thompson
Product Strategy Manager, Schilling Robotics

August 26th, 2020



**SCHILLING
ROBOTICS**

TechnipFMC at a glance

Our vision

To enhance the performance of the world's energy industry

Our Foundational Beliefs



Safety
Integrity
Quality
Respect
Sustainability

Key facts



37,000+
employees



128
nationalities



48 countries we
operate in



2 Stock
exchange
listings



18 vessels

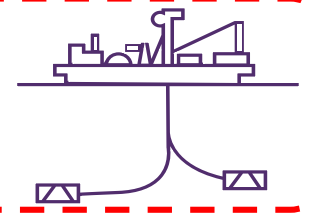


1 global HQ (London)
two operational HQs
(Paris and Houston)

2019 results

Revenue	Adjusted EBITDA*	Inbound orders	Year-end backlog
\$13.4bn	\$1.5bn	\$22.7bn	\$24.3bn

\$5.5bn Subsea



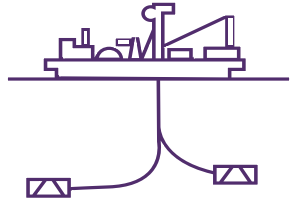
\$6.3bn Technip Energies



\$1.6bn Surface Technologies



Subsea Segment



Subsea products

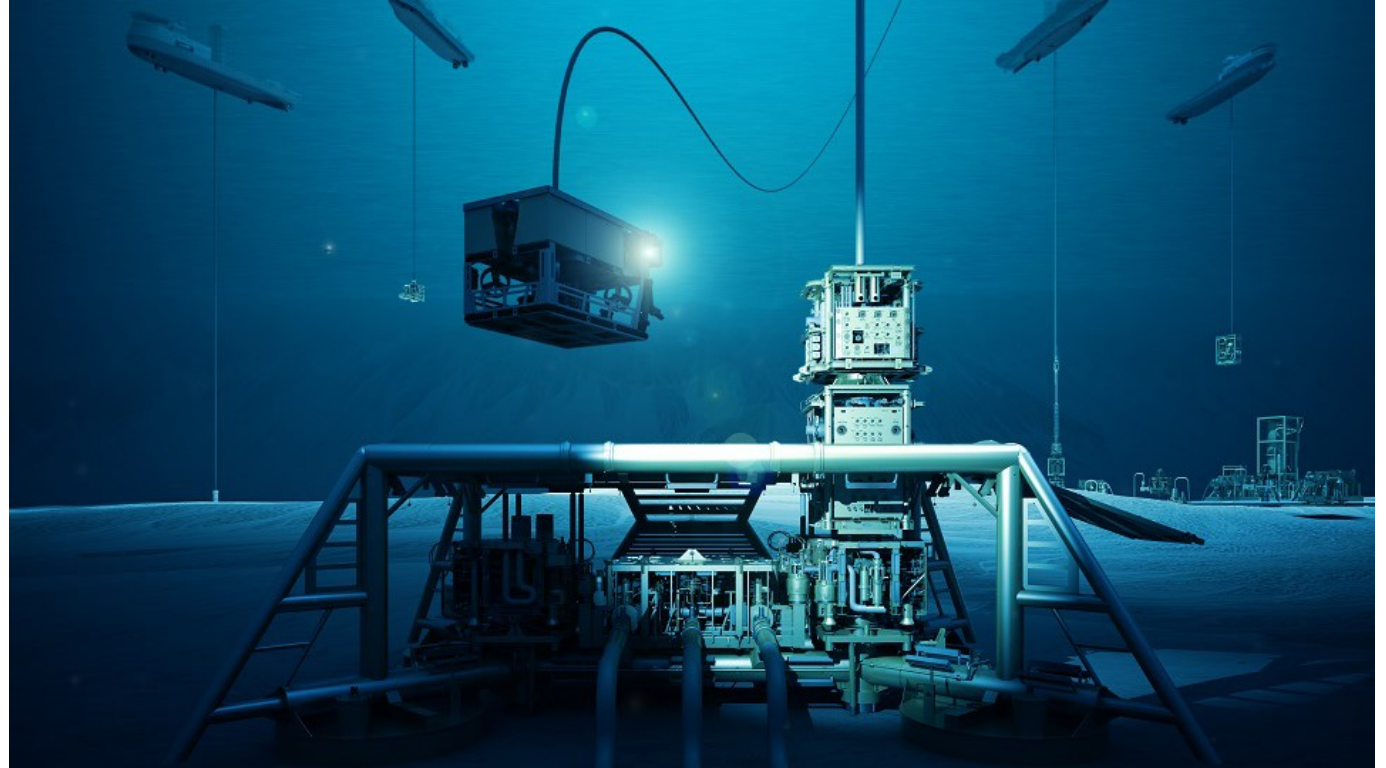
- Trees, manifolds, control, templates, flowline systems, umbilicals & flexibles
- Low carbon and electrified solutions
- Subsea processing
- ROVs and manipulator systems

Subsea projects

- Field architecture, integrated design
- iEPCI™ and EPCI

Subsea services

- Drilling systems
- Installation using high-end fleet
- Asset management & production optimization
- Field IMR and well services



Key strengths:

Market leading positions built upon innovation and deep industry knowledge.

Differentiated offering of integrated products, services: iFEED™, iEPCI™ and iLoF™

Alliances and technology to drive greater efficiency and simplification.

The offshore oil & gas industry



The downturn and COVID-19



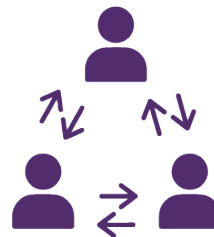
Historically cyclical market is resetting to a new baseline.

The status quo is challenged. Business opportunities to provide product/technologies that enable remote work.

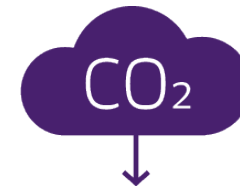
We are an “energy” industry. The pivot to new sources is accelerating (i.e. renewables, blue hydrogen, etc.).



Drive real change



Align with partners



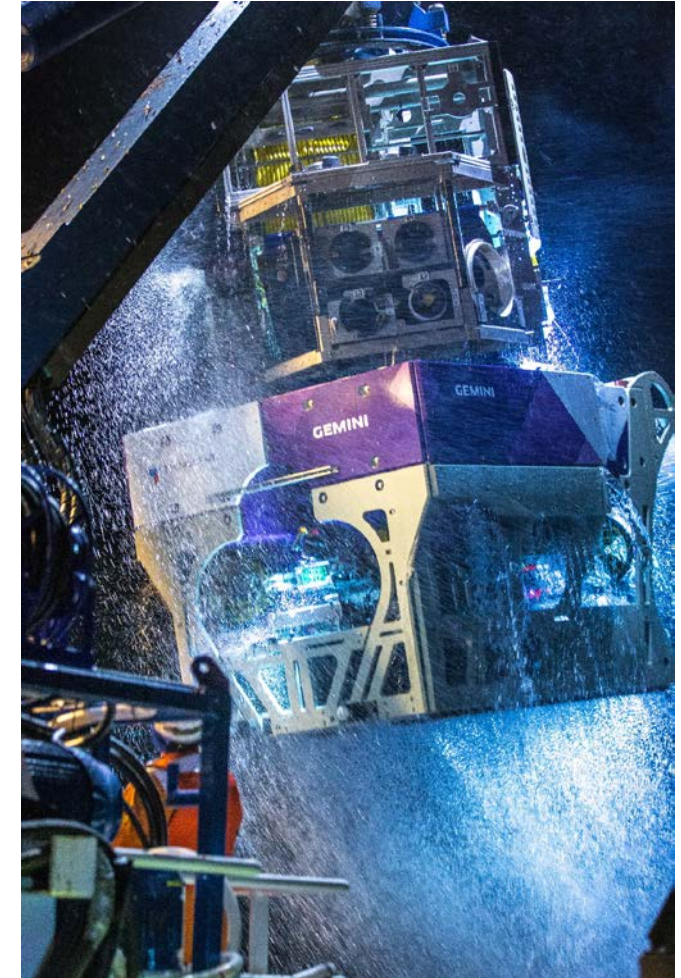
Deliver sustainable solutions

Schilling Robotics, a division of TechnipFMC

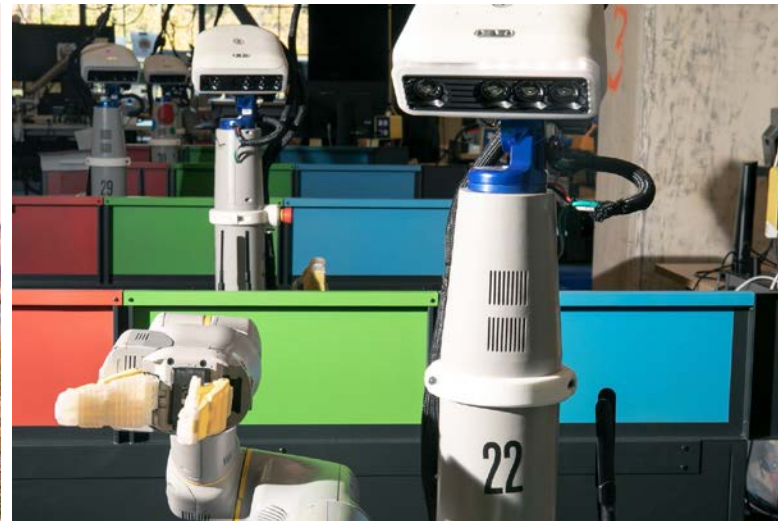


The leading provider of robotic solutions to the offshore construction industry

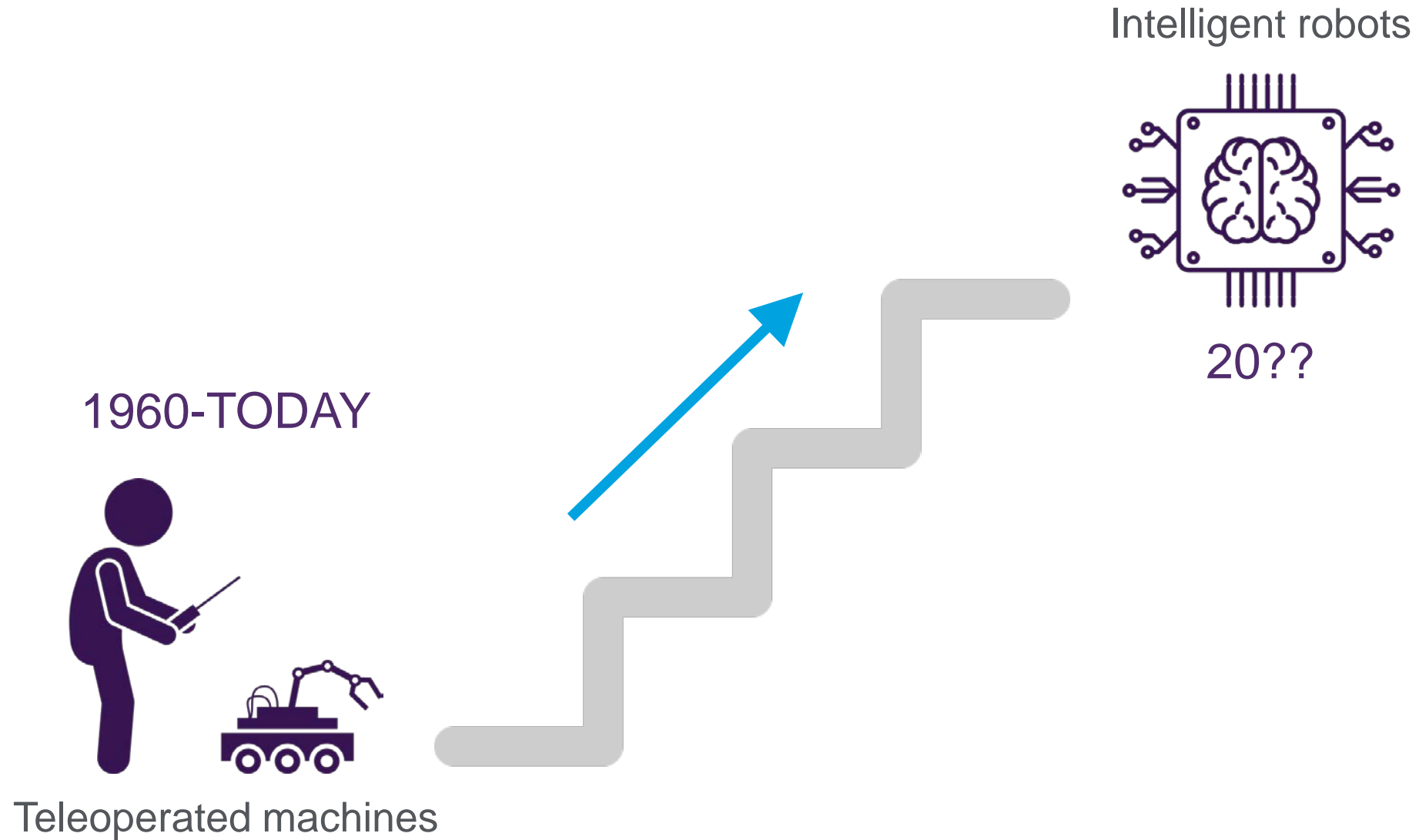
- 200 ROVs and 4,000 manipulators delivered since 1985
- 200 employees
- products designed and built in California



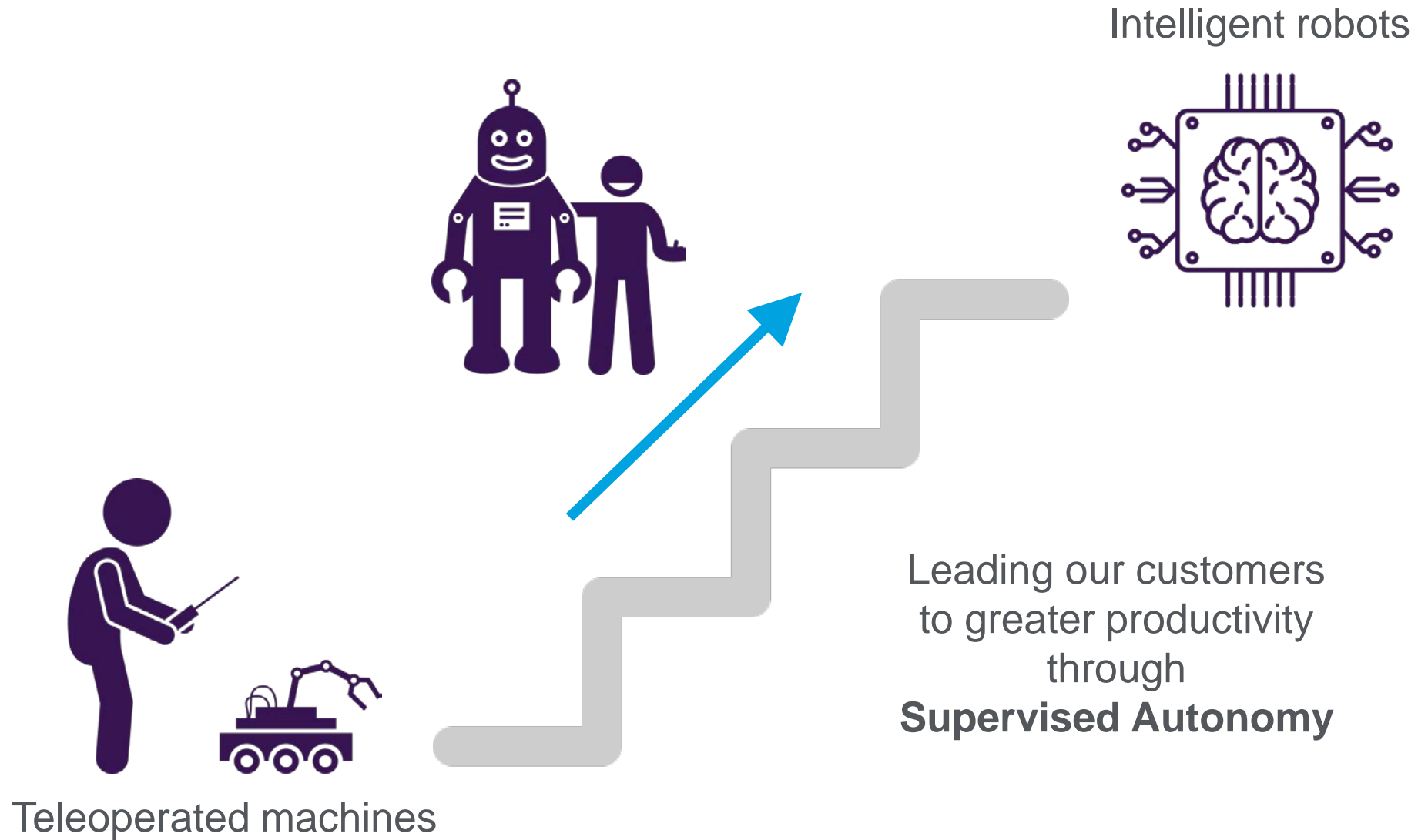
The promise of intelligent robots



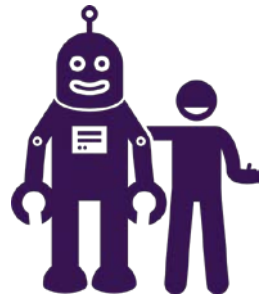
The road to intelligent robots



The road to intelligent robots



The principles of Supervised Autonomy



1. Empower people

Enabling the human to be more productive needs to remain at the center of everything we do.

2. Increase robotic aptitude

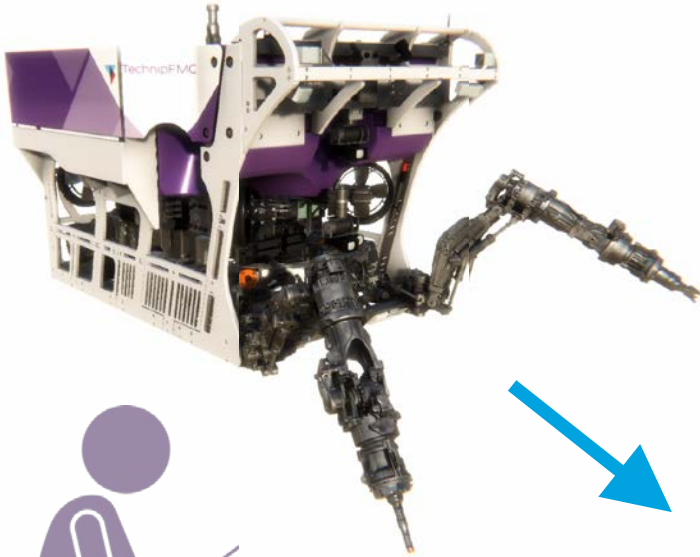
Enhancing the tool-kit of the subsea worker to expand what is possible subsea.

3. Ease of ownership

Reduce the burden and increase the value of owning our products.

The first step along the road

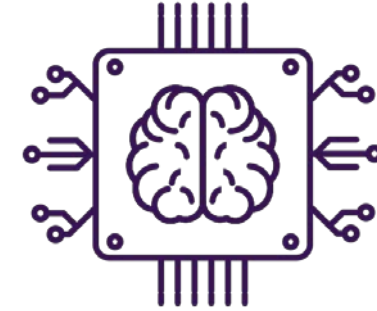
Gemini™ ROV Svstem



Teleoperated machines



Intelligent robots

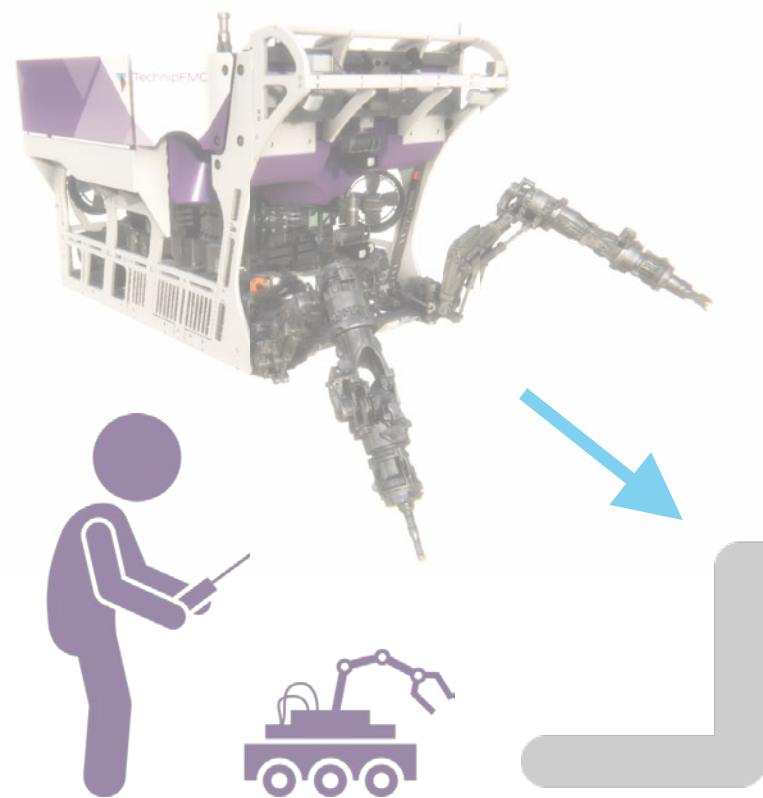


The first step in Supervised Autonomy

- Advanced perception capabilities (vision, touch)
- Actuation designed for automation
- Leveraging the human, not minimizing them

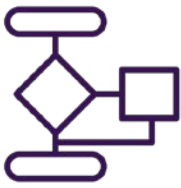
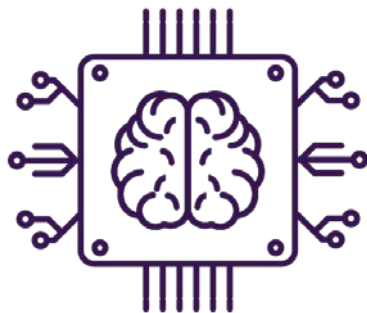
Making friends for a long journey

Gemini™ ROV System



Teleoperated machines

Intelligent robots



Advances in foundational technologies

WE LOOK FORWARD TO WORKING WITH YOU

Contact:
Matthew Thompson
matthew.thompson@technipfmc.com