



OUR MISSION

To leverage the latest advances in micro electronics and digital signal processing to bring you sonar products that are Sensibly Priced!

We are passionate about making ocean exploration more accessible, and we know that not everyone has the budget of the US Navy and the Big Oil companies. That's why we do it.



ROV Locator USBL

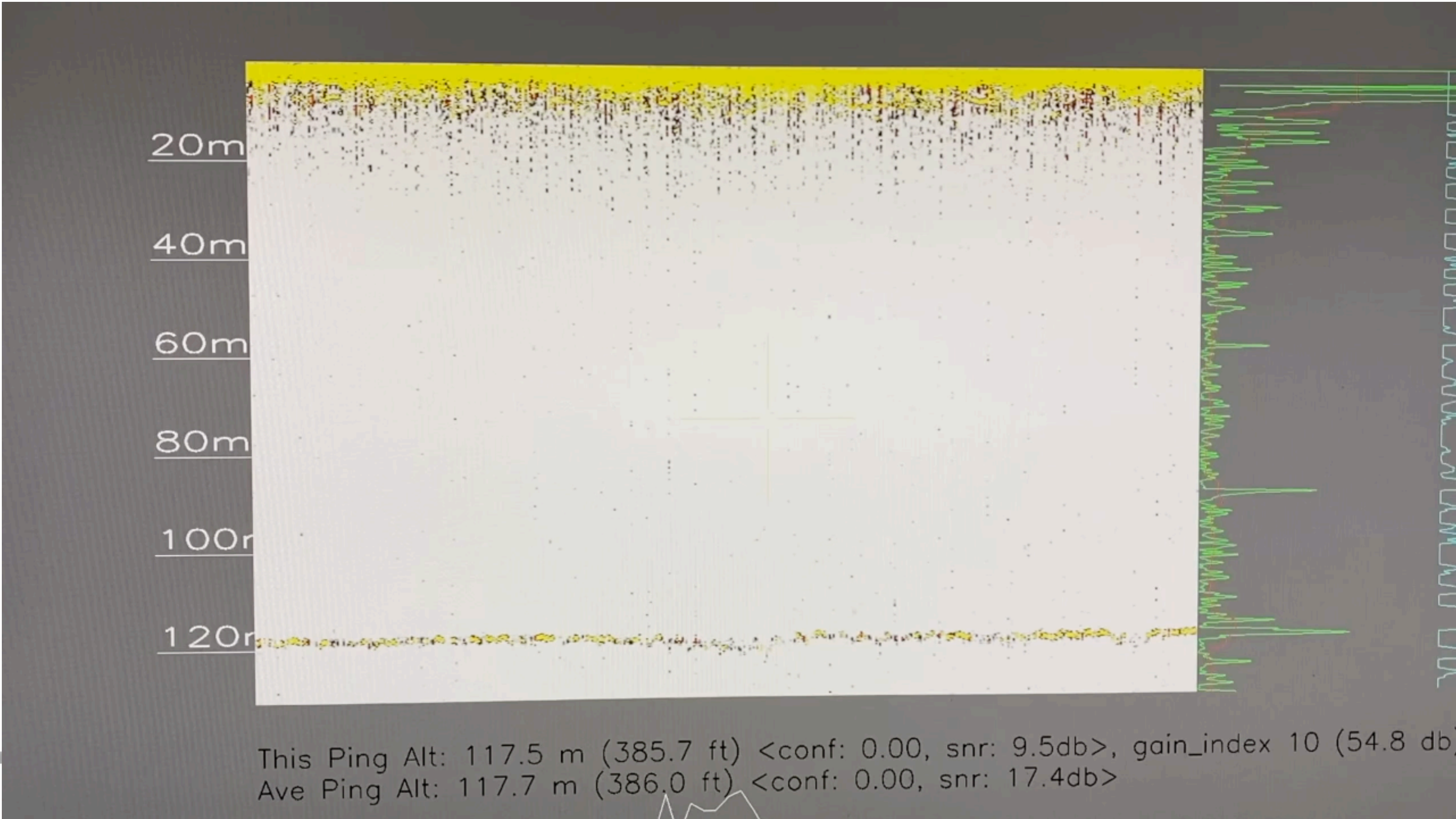
Absolute Maximum Range	1 km	Slant range measurement resolution	0.1m
Typical Usable Range	300m	Slant range error accumulation (typical)	2 m/hr
Apparent Yaw/Azimuth resolution	1°	IMU Euler angle accuracy, typical	2°
Apparent Elevation angle resolution	1°	Update rate	1Hz
Maximum Depth	100m / 300m	Ping Frequency	25 kHz



Sounder S500 CHIRP Single-Beam Echosounder

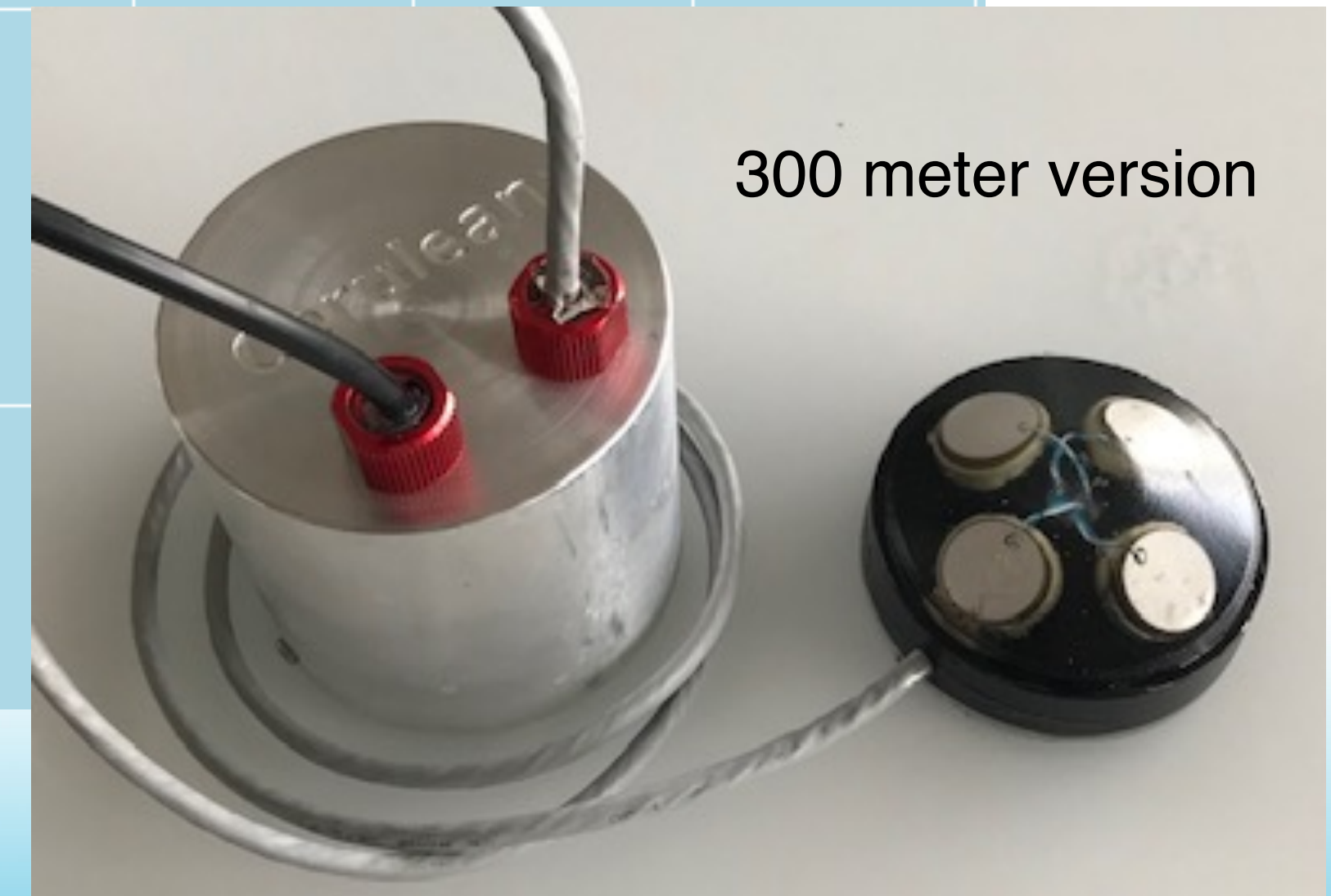
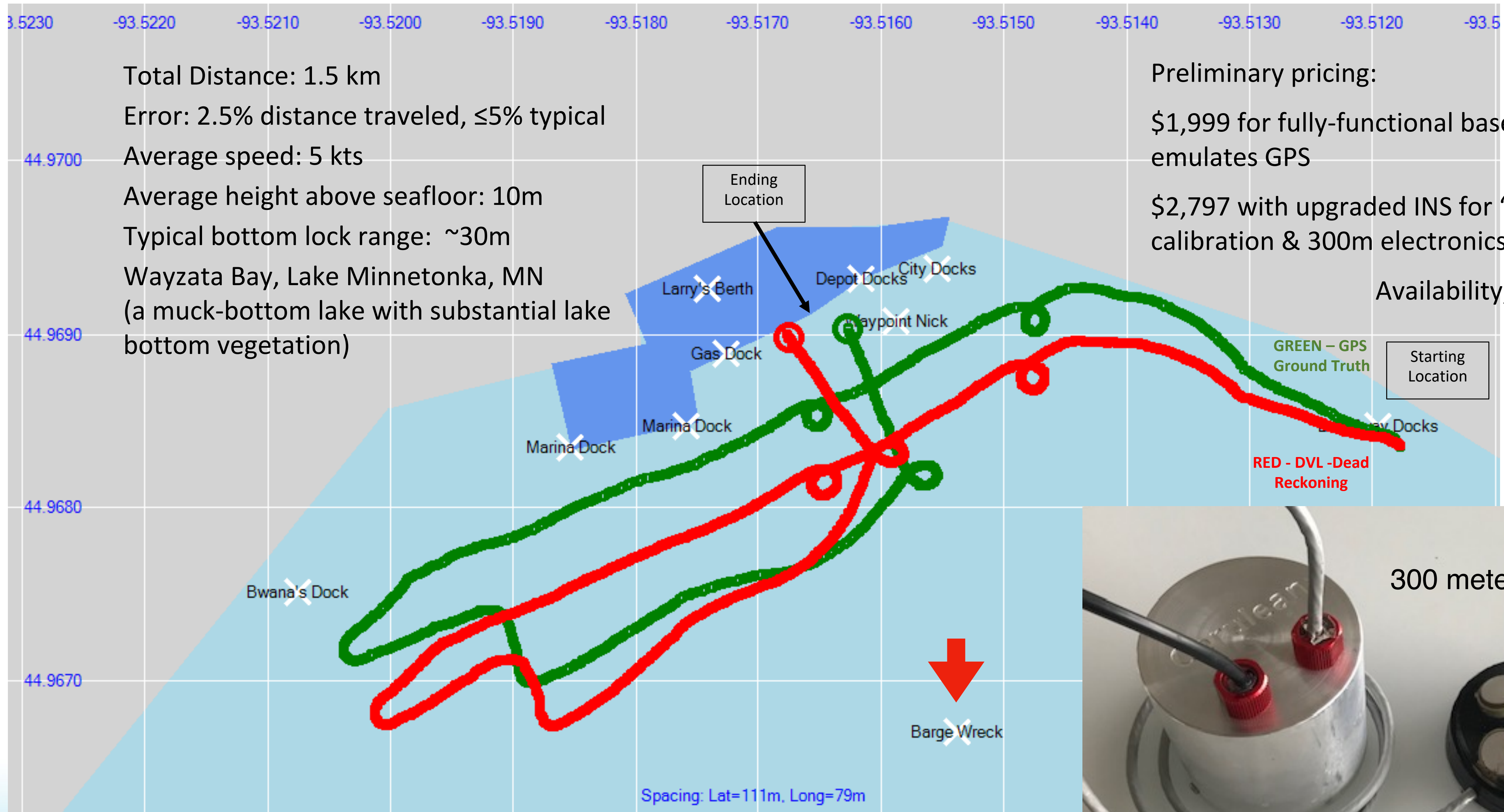
Interfaces

- Ethernet (100Mb/s)
- USB (12Mb/s)
- Serial (115kbaud)



Acoustic Frequency	500 kHz	Minimum Range	0.3 meters
Beam Width (2-way, conical)	about 5 degrees.	Maximum Range	100+ meters
Modulation	CHIRP with 20 kHz bandwidth monotone ping also supported	Depth Rating	300 meters

DVL R&D Test – Internal Dead Reckoning

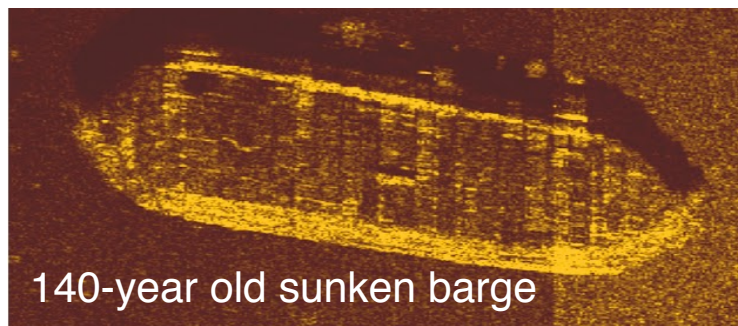
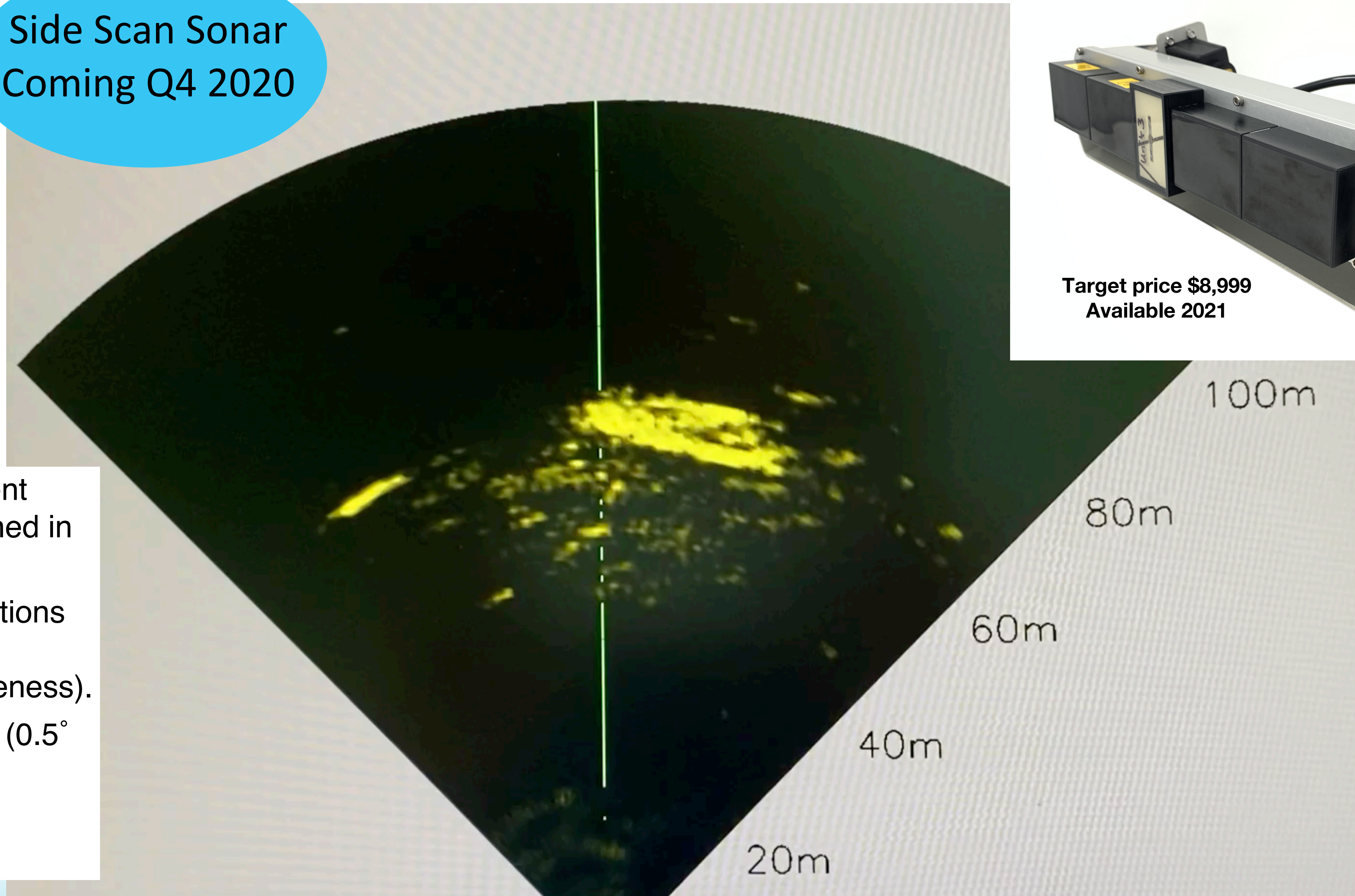


Forward Looking Multi Beam

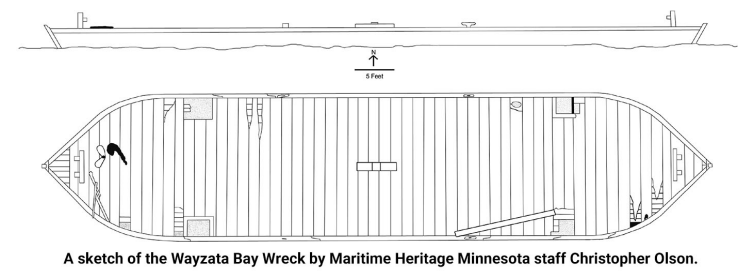
Side Scan Sonar
Coming Q4 2020



Target price \$8,999
Available 2021



140-year old sunken barge



A sketch of the Wayzata Bay Wreck by Maritime Heritage Minnesota staff Christopher Olson.



240kHz array with 16 element modules that can be combined in various configurations.

All condition navigation solutions (object detection, obstacle avoidance, situational awareness).

In this example, 181 beams (0.5° spacing).

Ping rate up to 20Hz unless limited by range.