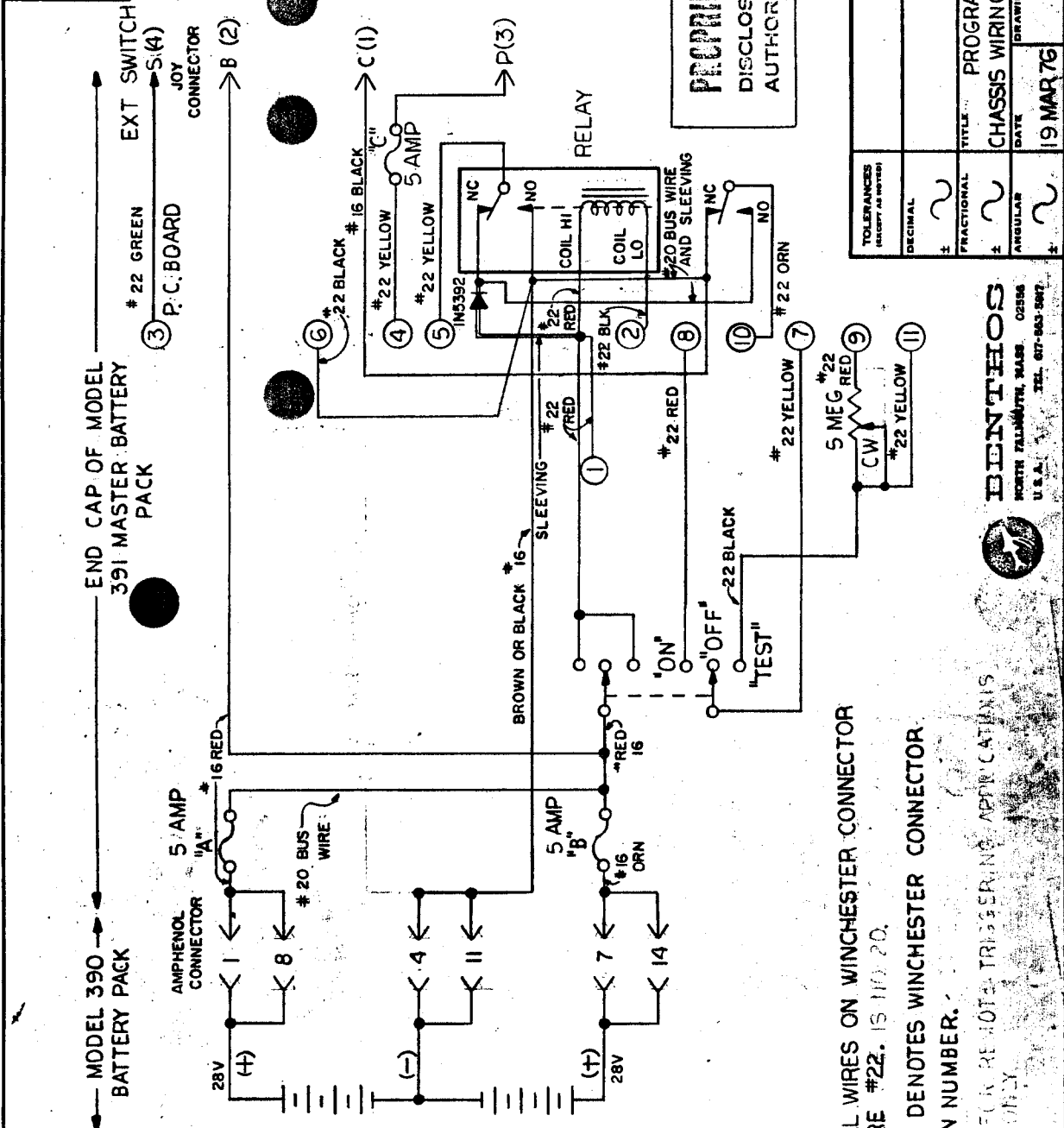


DATE	REV.	REVISION RECORD	BY	CHK.
7/1/74	A	REVISIONS TO "REPEL"	EH	BL
7/1/74	B	CHANGES PER E.C.C.	EH	BL
7/1/74	C	CHANGED WIRE STRINGS	EH	BL
7/1/74	D	CHANGED WIRE STRINGS	EH	BL
8/1/74	E	CHANGED WIRE STRINGS	EH	BL
8/1/74	F	CHANGED WIRE STRINGS	EH	BL



**PROPRIETARY INFORMATION**  
DISCLOSURE ONLY TO PERSONS  
AUTHORIZED BY BENTHOS INC.

TOLERANCES UNLESS OTHERWISE SPECIFIED	DECIMAL	FRACTIONAL	ANGULAR
	±	±	±

CHECKED BY	DATE
W.D.P.	10/1/74
DRAWN BY	SCALE
E.H.	NONE
APPROVED BY	
E.H.	

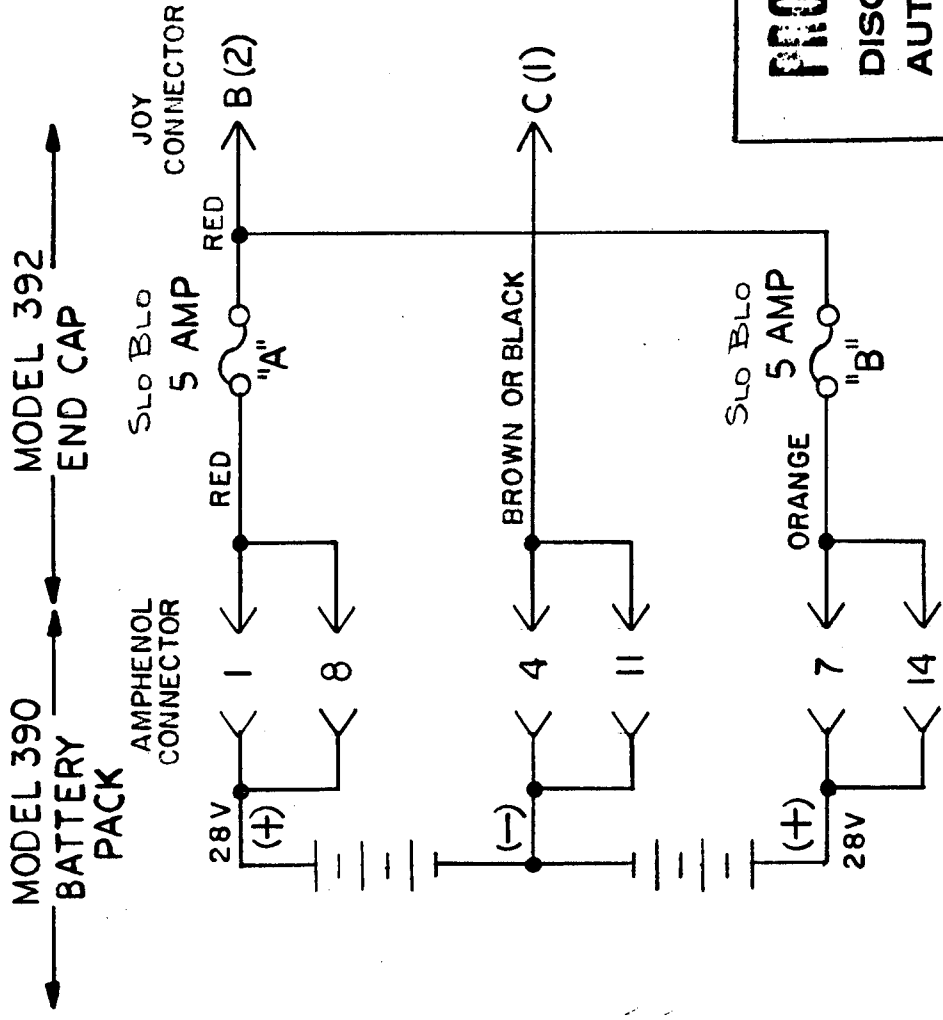
TITLE	PROGRAMMER END CAP
CHASSIS WIRING DIAGRAM FOR MODEL 391	
DATE	19 MAR 76
DRAWING NUMBER	B-391-8
	F

- NOTES:**
1. ALL WIRES ON WINCHESTER CONNECTOR ARE #22. IS 110 20.
  2. O DENOTES WINCHESTER CONNECTOR PIN NUMBER.

\* FOR REMOTE TRIGGERING APPLICATIONS ONLY

**BENTHOS**  
NORTH ZALAMA, MASS 02266  
U.S.A. TEL. 617-843-8877

DATE SYM	REVISION RECORD	AUTH.	DR. CK.
7/1974	A 5 AMP WAS 10 AMP 2 PLACES	GH	BL
9/1/78	B CHANGES MADE CASUALTY ON 392 TO REMOVAL OF SERIALS SPINDLES ON 572 TO 4 PLACES	GH	BL



**PROPRIETARY INFORMATION**  
 DISCLOSURE ONLY TO PERSONS  
 AUTHORIZED BY BENTHOS INC.

**NOTES:**

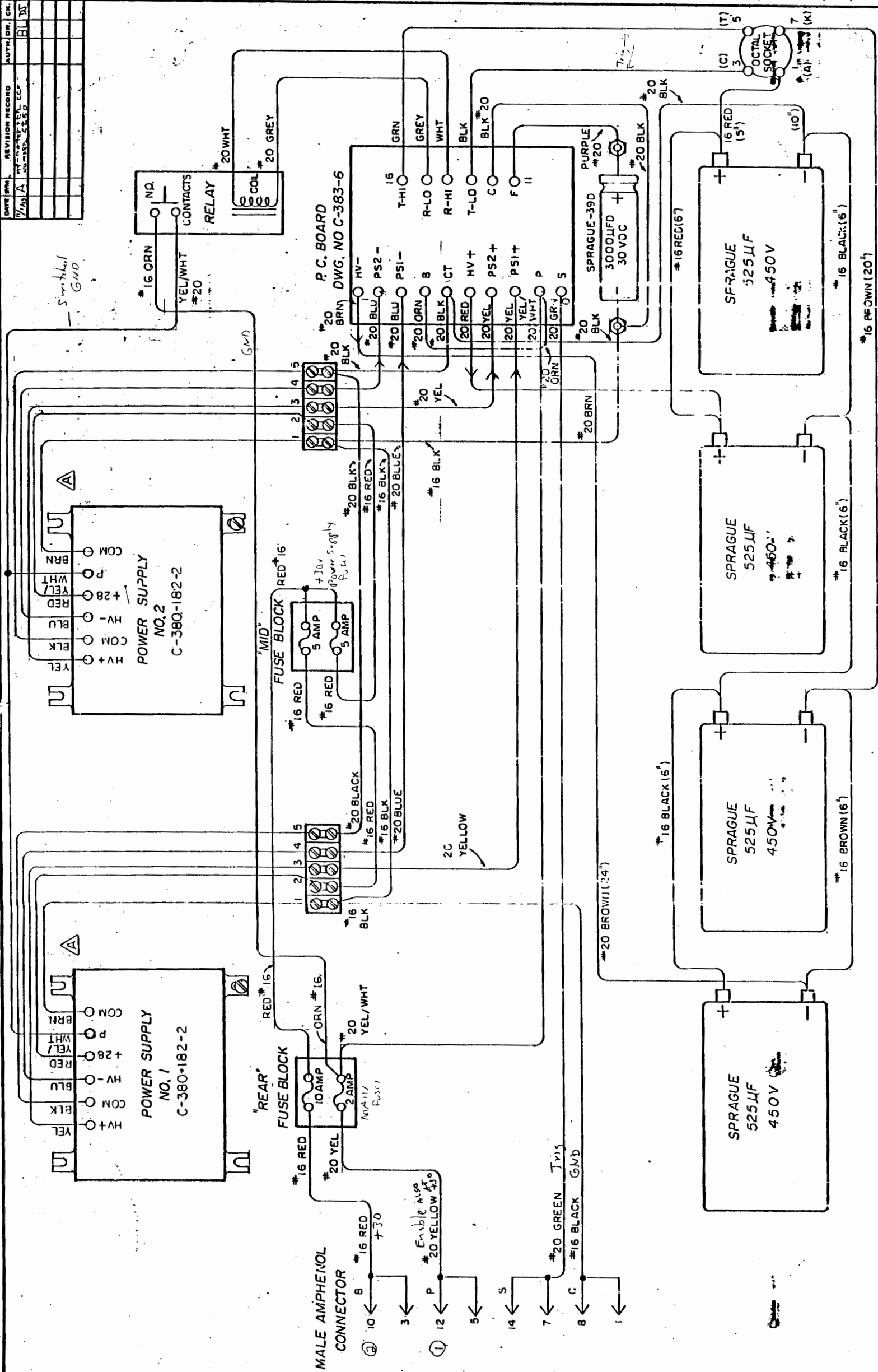
1. ALL WIRE, NO. 16.

**BENTHOS, INC.**  
 EGGERTON DRIVE  
 NO. FAY WORTH, MASS. 02555 U.S.A.

TOLERANCES (EXCEPT AS NOTED)	CHECKED BY:
DECIMAL ± ~	DRAWN BY <i>B. J. Lambdin</i>
FRACTIONAL ± ~	APPROVED BY <i>GH</i>
ANGULAR ± ~	SCALE NONE
	TITLE CHASSIS WIRING DIAGRAM FOR MODEL 392 AUXILIARY BATTERY PACK
	DATE 29 MAY 74
	DRAWING NUMBER A-392-3 B

MADE IN U.S.A.

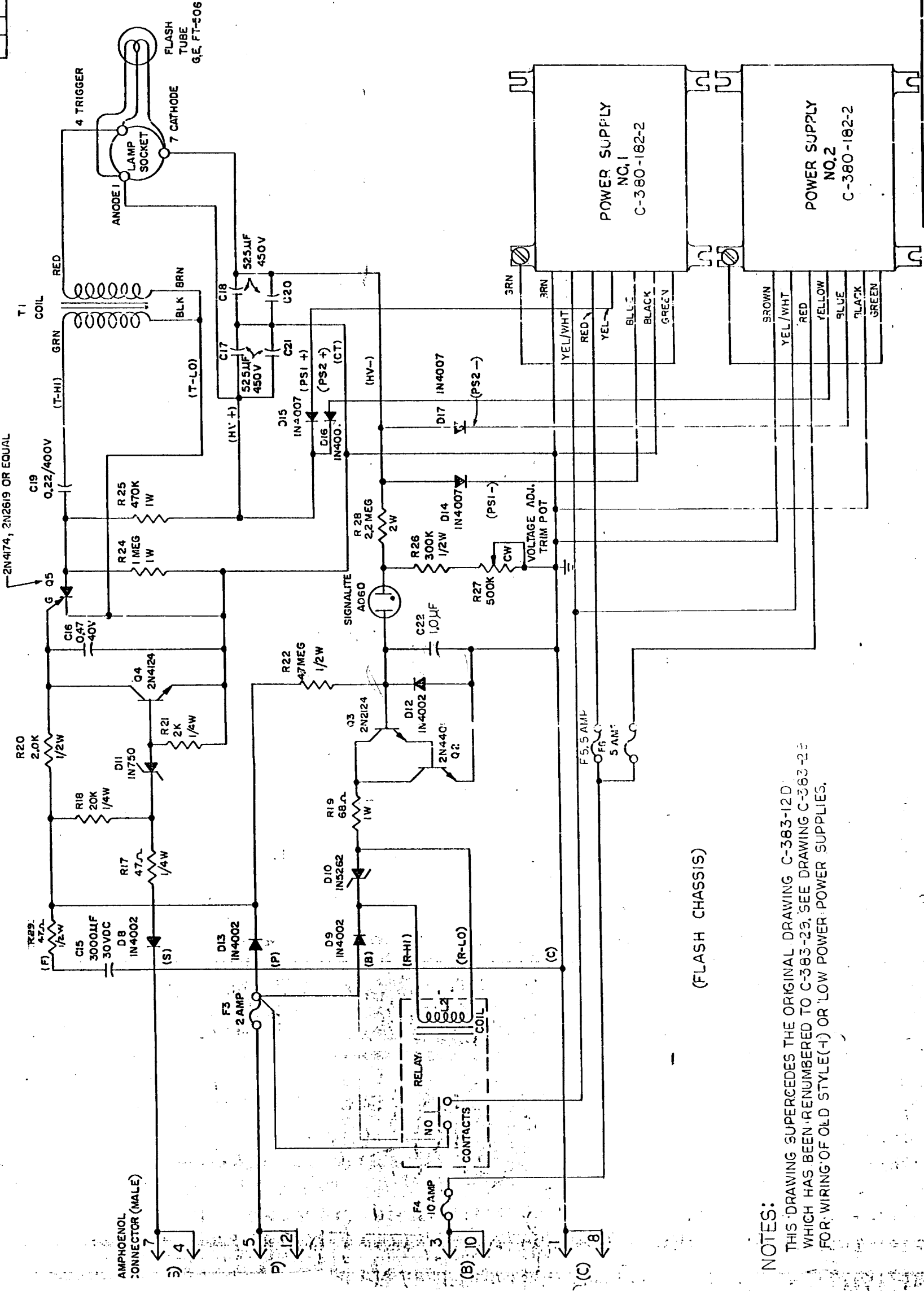
DATE	REV.	REVISION RECORD	AUTH.	DR.	CL.
7/1/51	A	REVISION RECORD			BL



TOLERANCES (UNLESS SHOWN)	DRAWN BY J. BENTON	CHECKED BY J. BENTON	APPROVED BY J. BENTON
DIMEN. ± .005	BENTON, INC. NORTH FALMOUTH, MASS. 02556 U.S.A. Telephone (617) 533-9317 Telex 94-0884		
SCALE AS SHOWN	WIRING DIAGRAM FOR MODEL 383 HIGH INTENSITY FLASH WITH REMOTE FLASH HEAD		
DATE 12 JUNE 92	REV. NONE	DRAWING NUMBER C-383-14	VERSION A

NOTES:  
 1. THIS DRAWING SUPERCEDES THE ORIGINAL DRAWING C-383-14 WHICH HAS BEEN RENUMBERED TO C-383-30. SEE DRAWING C-383-30 FOR WIRING OF OLD STYLE (-) OR LOW POWER SUPPLIES.

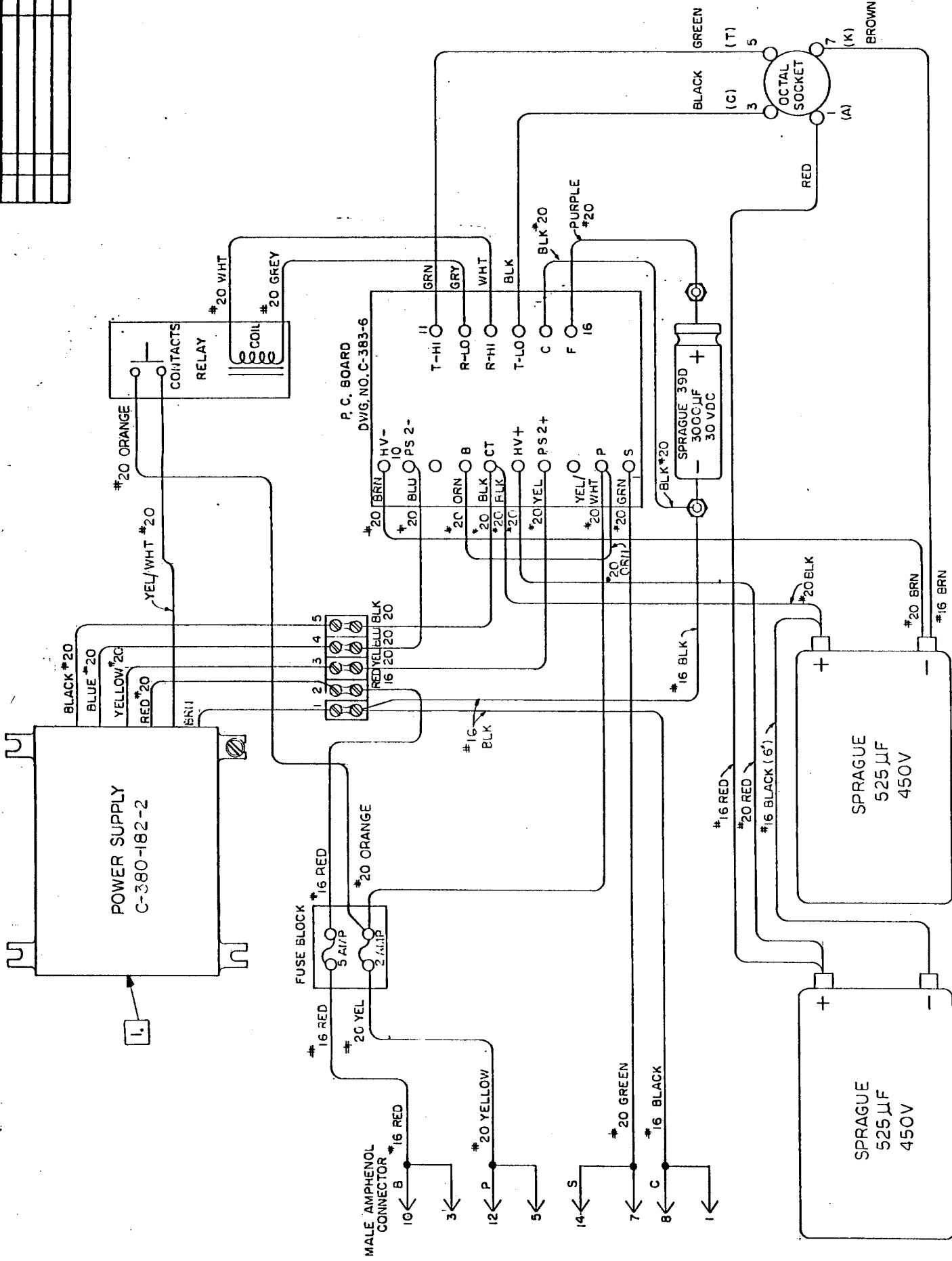
DATE	SYMBOL	REVISION RECORD	AUTH.	DR.	CHK.
12 JUN 92	A	1st DATED REV. 22	MM	BL	MM
		2nd REV. 45 88			



NOTES:  
THIS DRAWING SUPERCEDES THE ORIGINAL DRAWING C-383-12D WHICH HAS BEEN RENUMBERED TO C-383-29. SEE DRAWING C-383-29 FOR WIRING OF OLD STYLE(-) OR LOW POWER POWER SUPPLIES.

(FLASH CHASSIS)

DATE	REVISED	REVISION RECORD	AUTH. DR.	CH.



**NOTES:**

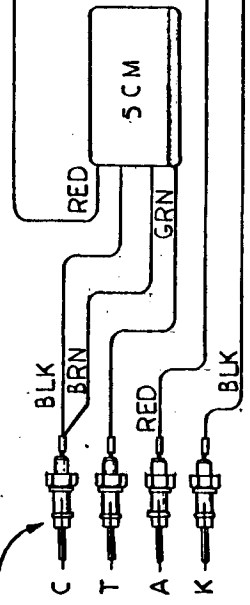
[1] SEE DRAWING C-382-27 FOR WIRING OF OLD STYLE OR LOW POWER POWER SUPPLIES.

**NOTE:**

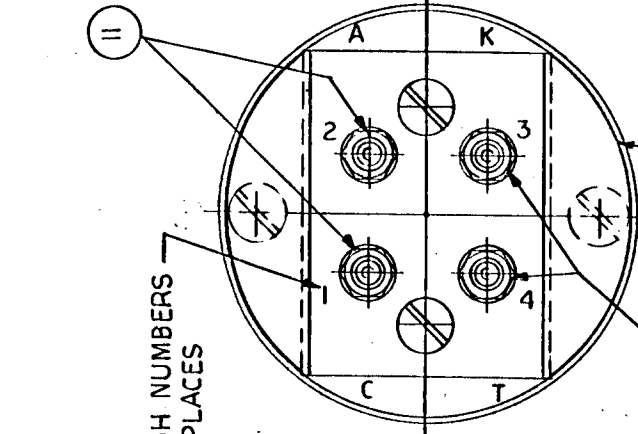
THIS DRAWING SUPERCEDES THE ORIGINAL DRAWING C-382-14 WHICH HAS BEEN RENUMBERED TO C-382-27.

	<b>BENTHO'S, INC.</b> NORTH FALMOUTH, MASS. 02556 U.S.A. Telephone (617) 563-5917 Telex 94-0884	DRAWN BY <i>R. J. Pennington</i> CHECKED BY APPROVED BY <i>M. J. Pennington</i>
TOLERANCES (UNLESS AS NOTED) ORIGINAL FUNCTIONAL DIMENSIONAL FINISH	TITLE <b>WIRING DIAGRAM FOR MODEL 382 WITH REMOTE FLASH HEAD</b>	DATE 11 MAR 92 DRAWING NUMBER <b>C-382-14</b> SCALE NONE REVISION

JOY CONNECTORS



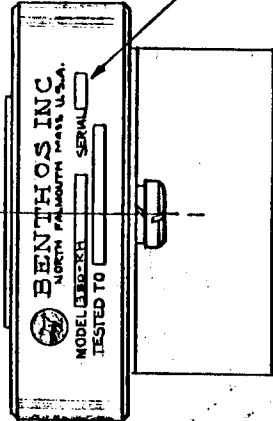
WIRING DIAGRAM



STAMP 1/8" HIGH NUMBERS AS SHOWN, 4 PLACES

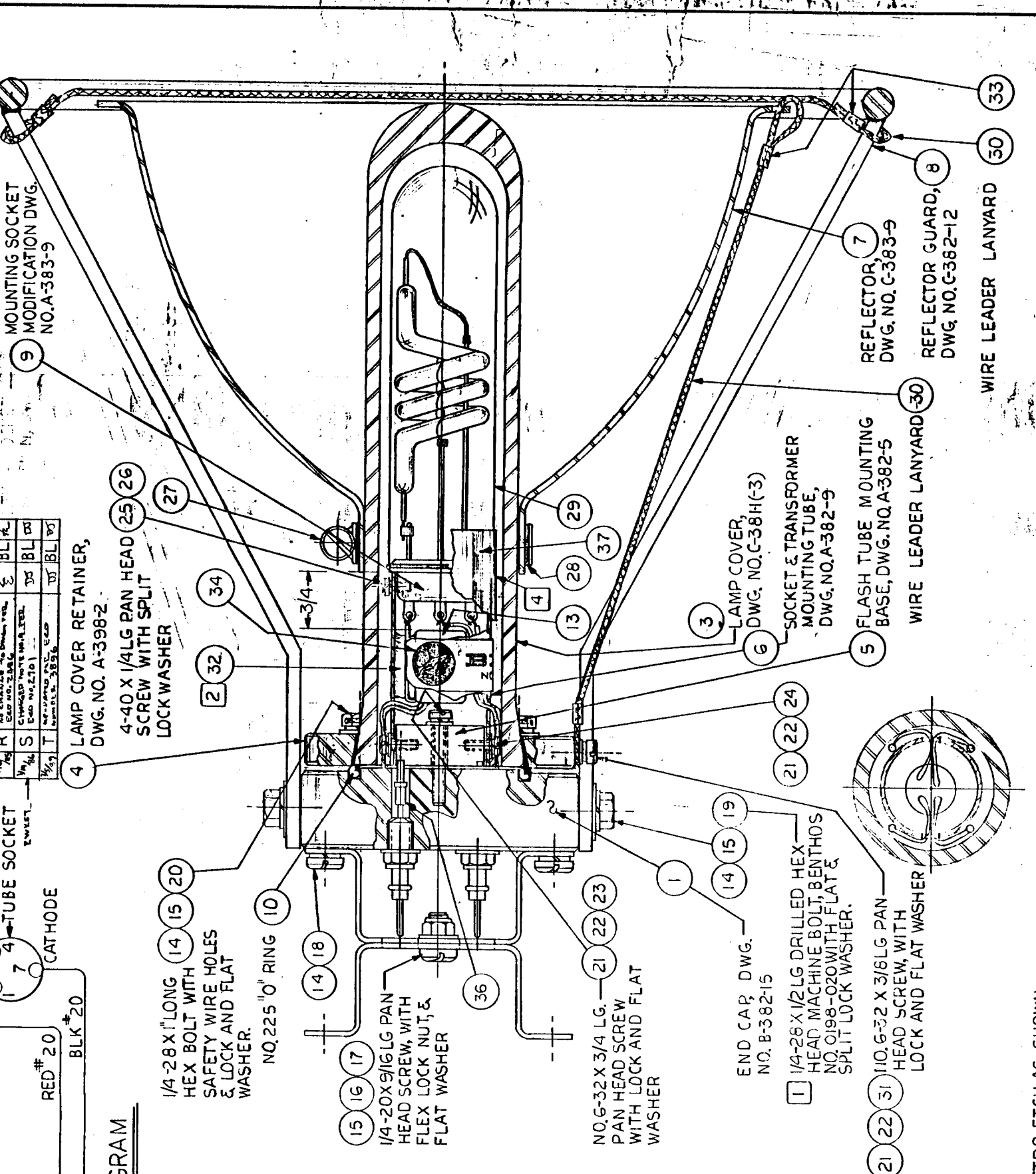
ETCH LABEL THIS SIDE

CONNECTOR GUARD, DWG. NO. B-398-2 (2 REQ'D)



ELECTRO ETCH AS SHOWN

REV	BY	DATE	DESCRIPTION	CHKD	APP'D
1	...	...	...	...	...
2	...	...	...	...	...
3	...	...	...	...	...
4	...	...	...	...	...
5	...	...	...	...	...
6	...	...	...	...	...
7	...	...	...	...	...
8	...	...	...	...	...
9	...	...	...	...	...



MOUNTING SOCKET MODIFICATION DWG. NO. A-383-9

LAMP COVER RETAINER, DWG. NO. A-398-2

4-40 X 1/4 LG PAN HEAD SCREW WITH SPLIT LOCK WASHER

1/4-28 X 1" LONG HEX BOLT WITH SAFETY WIRE HOLES & LOCK AND FLAT WASHER.

NO. 225 "O" RING

1/4-20 X 9/16 LG PAN HEAD SCREW, WITH FLEX LOCK NUT, & FLAT WASHER

NO. 6-32 X 3/4 LG. PAN HEAD SCREW WITH LOCK AND FLAT WASHER

END CAP, DWG. NO. B-382-15

1/4-28 X 1/2 LG DRILLED HEX HEAD MACHINE BOLT, BENTHOS NO. 0198-020 WITH FLAT & SPLIT LOCK WASHER.

NO. 6-32 X 3/8 LG PAN HEAD SCREW, WITH LOCK AND FLAT WASHER

LAMP COVER, DWG. NO. G-38H(-3)

SOCKET & TRANSFORMER MOUNTING TUBE, DWG. NO. A-382-9

FLASH TUBE MOUNTING BASE, DWG. NO. A-382-5

WIRE LEADER LANYARD

REFLECTOR, DWG. NO. C-383-9

REFLECTOR GUARD, DWG. NO. G-382-12

WIRE LEADER LANYARD

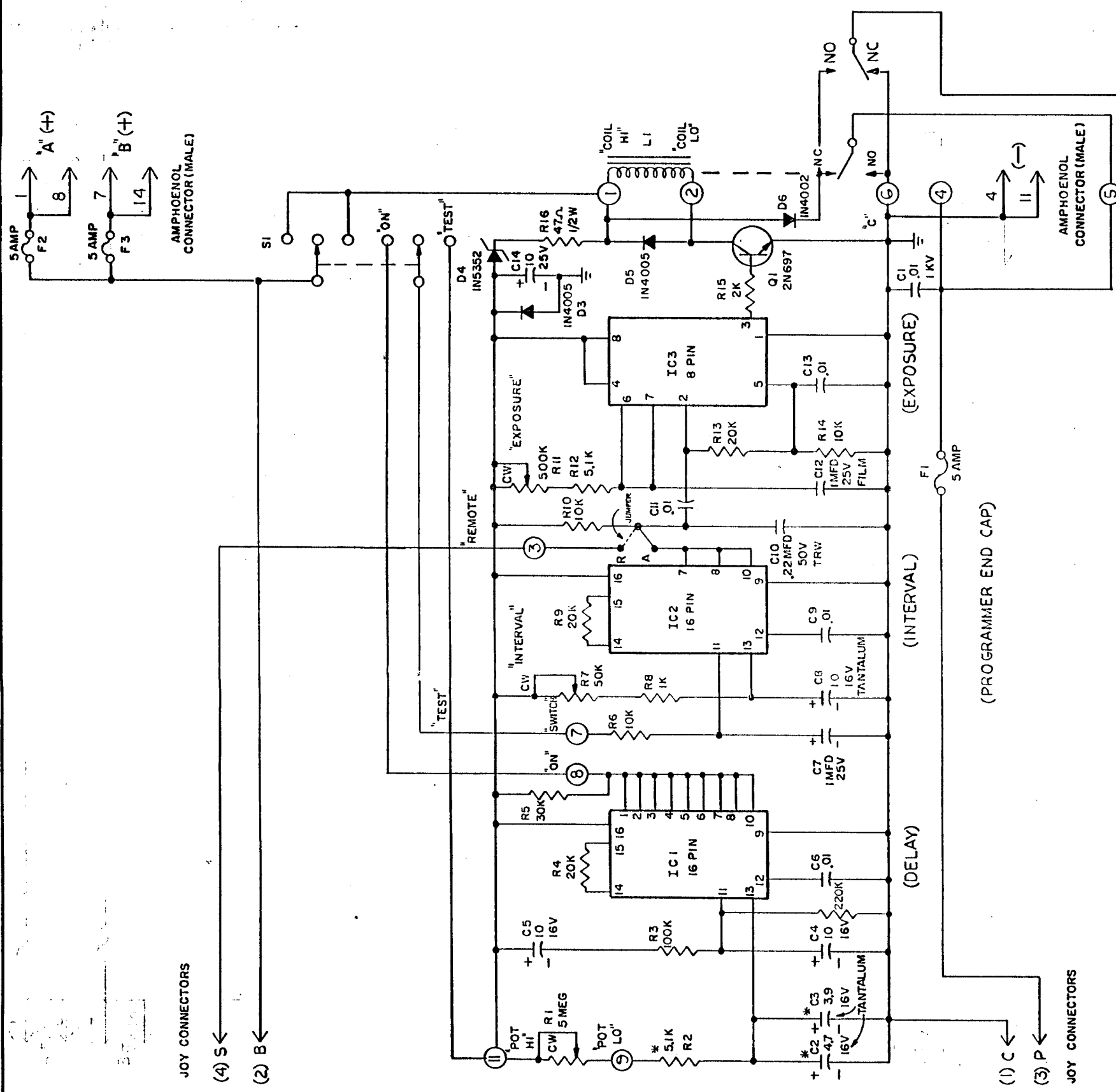
TOLERANCES EXCEPT AS NOTED	SCALE	TITLE	DATE	REVISION
± .005	FULL	REMOTE FLASH HEAD WITH GE 506 FLASH TUBE	10 JUNE 75	U

4. WRAP TWO TURNS OF SCOTCH NO. 33 BLACK TAPE, PIN 0903-014 AROUND FLASH TUBE BASE AND MOUNTING SOCKET.

2. EPOXY TRANSFORMER TO SIDE WALL OF ITEM NO. 6.  
3. PRESSURE TEST TO 17,000 P.S.I. FOR 15 MINUTES, 120000M.

BENTHOS INC. NORTH PALM BEACH, FLA. U.S.A. TEL. 917-688-8117

DATE	SYMBOL	REVISION RECORD	AUTH.	CHK.
3/1/71	A	DESIGN	BL	BL
3/1/71	B	REVISION	BL	BL
3/1/71	C	REVISION	BL	BL
3/1/71	D	REVISION	BL	BL

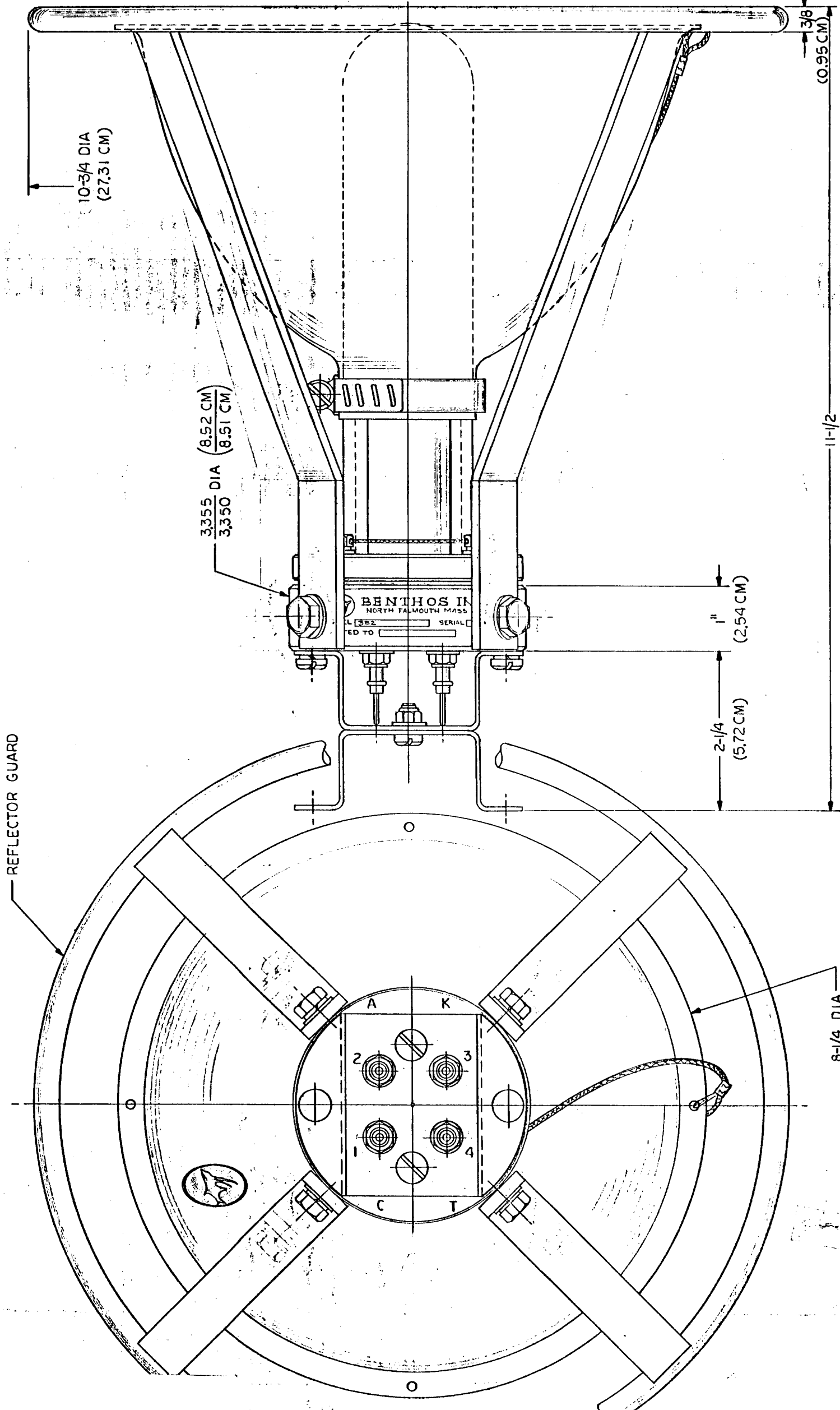


TOLERANCES (EXCEPT AS NOTED)	SCALE	TITLE	DATE
DECIMAL ±	NONE	SCHEMATIC DIAGRAM FOR MODEL 391 PROGRAMMER END CAP	30MAY75
FRACTIONAL ±		DRAWING NUMBER	C-391-10D
ANGULAR ±			

**BENTHOS INC.**  
 NORTH PALM BEACH, FLORIDA, U.S.A.  
 TEL. 817-883-8817

**NOTES:**  
 1. ○ DENOTES WINCHESTER CONNECTOR PIN NUMBER.  
 2. \* DENOTES DELAY TRIM ADJUST.

DATE	BY	REVISION RECORD	AUTH. DR. CH.
1/14/76	A	REVISIONS: 1. 10-3/4 DIA (27.31 CM) 2. 3/8 (0.95 CM)	BL
1/14/76	B	ADDED METRIC DIMENSIONS	GH



TOLERANCES UNLESS NOTED	DECIMAL	FRACTIONAL	ANGULAR
	2	1/32	2

CHECKED BY:	SCALE	TITLE	DATE
WDM	FULL	OUTLINE DRAWING FOR REMOTE FLASH HEAD FOR 382 383 FLASH	3 MAR 76

DRAWN BY:	APPROVED BY:	DRAWING NUMBER
WDM	GH	C-382-13B

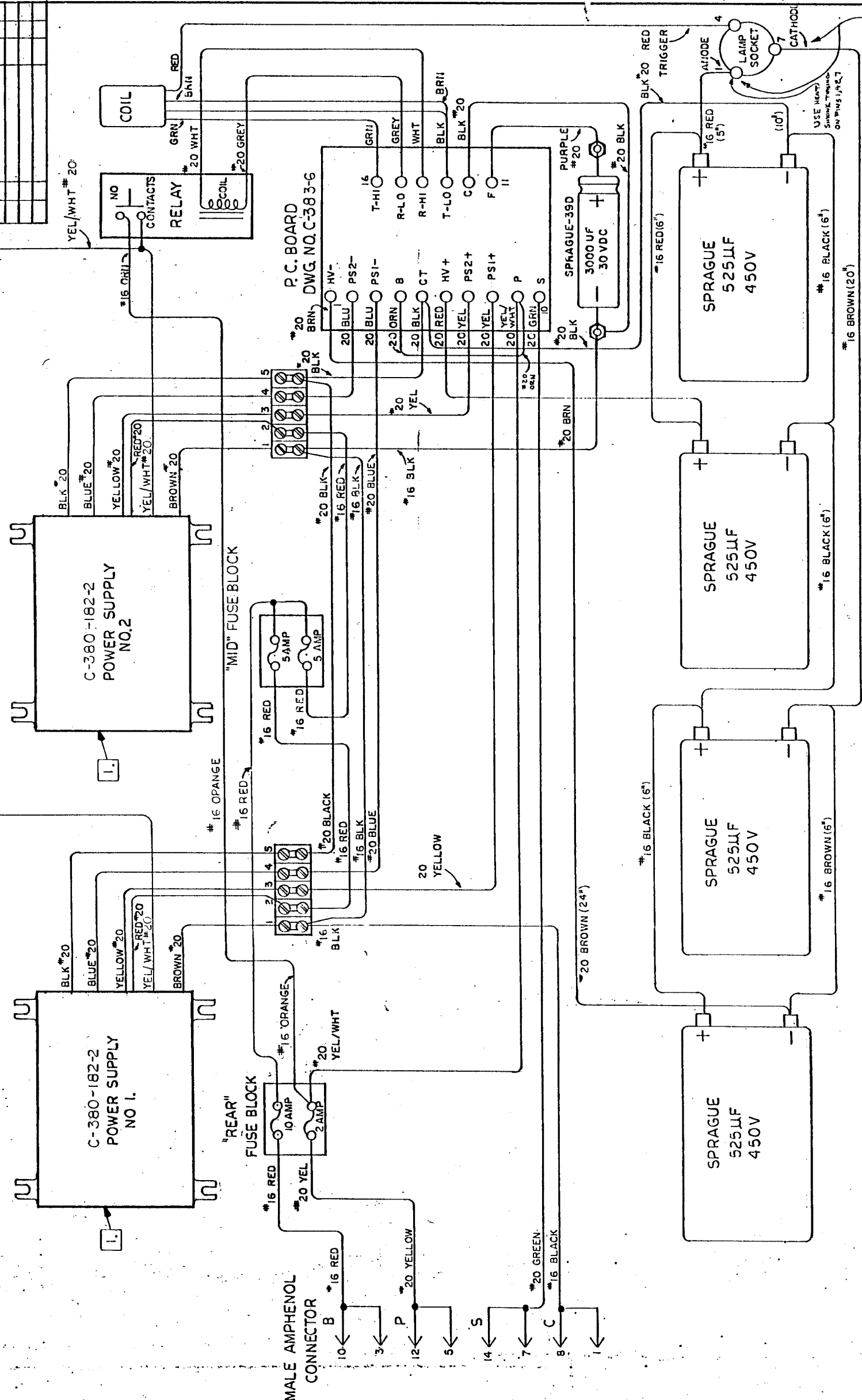
**BENTHOS**  
 NORTH FALMOUTH, MASS 02556  
 U.S.A. TEL. 617-963-9917

MADE IN U.S.A.

REF. 10 8488



DATE	SYMBOL	REVISION RECORD	AUTH.	CHK.



NOTE: SWITCH LEADS TO TERMINALS 1 AND 7 IF FLASH TUBE USED IS MADE BACKWARDS.

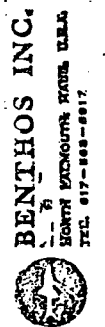
NOTE: THIS DRAWING SUPERCEDES THE ORIGINAL DRAWING C-383-7 WHICH HAS BEEN RENUMBERED TO C-383-26.

NOTES:  
 [1] REFERENCE DRAWING C-383-26 FOR WIRING OF LOW POWER SUPPLIES OR OLD STYLE POWER SUPPLIES.

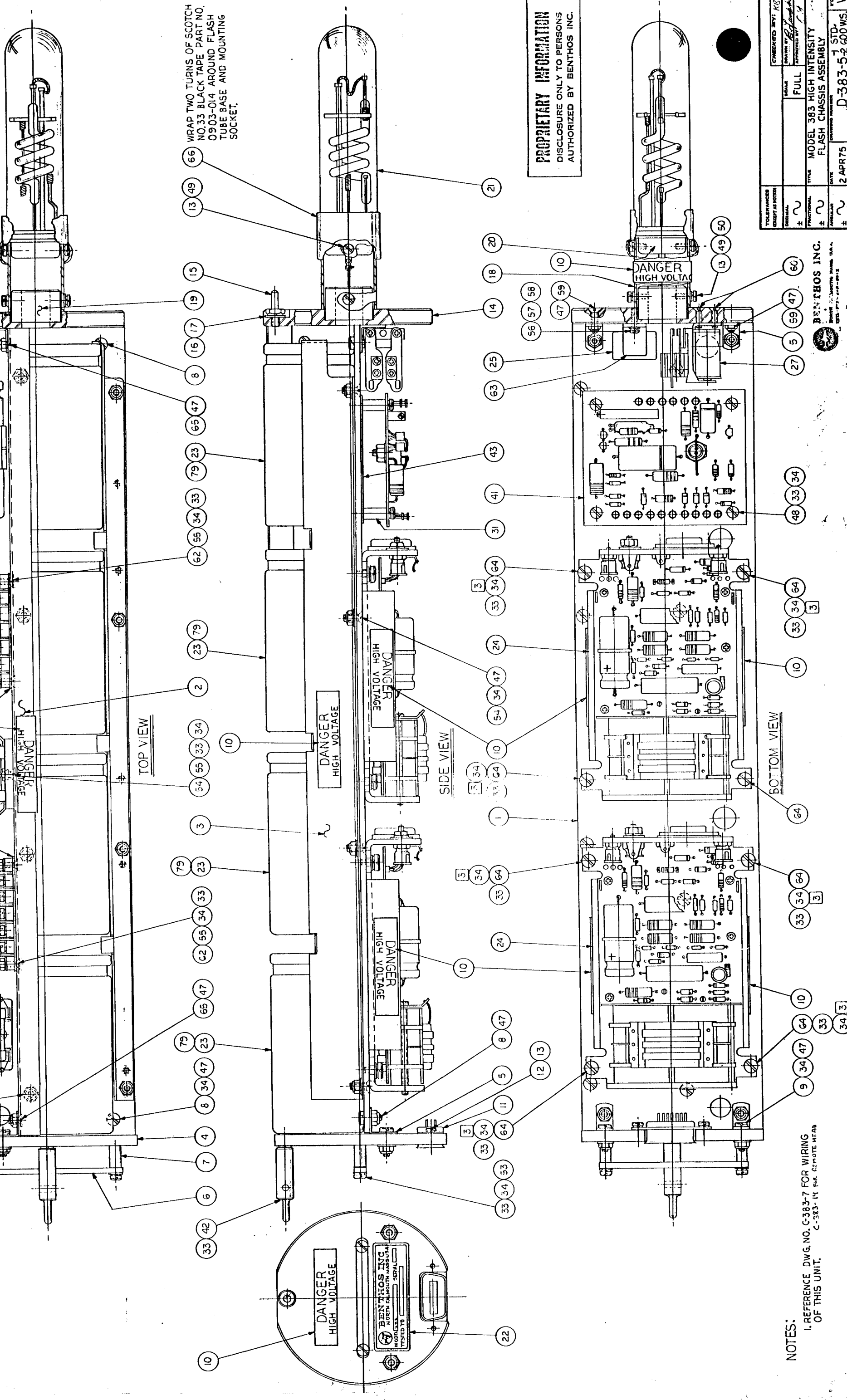
TOLERANCES (EXCEPT AS NOTED)	SCALE	CHECKED BY
DECIMAL ±	NONE	
FRACTIONAL ±		
ANGULAR ±		

TITLE	DATE	DRAWING NUMBER	REV.
WIRING DIAGRAM FOR MODEL 383 HIGH INTENSITY FLASH	11 MAR 92	C-383-7	

**PROPRIETARY INFORMATION**  
 DISCLOSURE ONLY TO PERSONS AUTHORIZED BY BENTHOS INC.



REV	DATE	BY	CHKD	DESCRIPTION
1				ISSUED FOR FABRICATION
2				REVISION
3				REVISION
4				REVISION
5				REVISION
6				REVISION
7				REVISION
8				REVISION
9				REVISION
10				REVISION
11				REVISION
12				REVISION
13				REVISION
14				REVISION
15				REVISION
16				REVISION
17				REVISION
18				REVISION
19				REVISION
20				REVISION
21				REVISION
22				REVISION
23				REVISION
24				REVISION
25				REVISION
26				REVISION
27				REVISION
28				REVISION
29				REVISION
30				REVISION
31				REVISION
32				REVISION
33				REVISION
34				REVISION
35				REVISION
36				REVISION
37				REVISION
38				REVISION
39				REVISION
40				REVISION
41				REVISION
42				REVISION
43				REVISION
44				REVISION
45				REVISION
46				REVISION
47				REVISION
48				REVISION
49				REVISION
50				REVISION
51				REVISION
52				REVISION
53				REVISION
54				REVISION
55				REVISION
56				REVISION
57				REVISION
58				REVISION
59				REVISION
60				REVISION
61				REVISION
62				REVISION
63				REVISION
64				REVISION
65				REVISION
66				REVISION
67				REVISION
68				REVISION
69				REVISION
70				REVISION
71				REVISION
72				REVISION
73				REVISION
74				REVISION
75				REVISION
76				REVISION
77				REVISION
78				REVISION
79				REVISION
80				REVISION



66 WRAP TWO TURNS OF SCOTCH NO.33 BLACK TAPE PART NO. 0903-014 AROUND FLASH TUBE BASE AND MOUNTING SOCKET.

**PROPRIETARY INFORMATION**  
DISCLOSURE ONLY TO PERSONS AUTHORIZED BY BENTHOS INC.

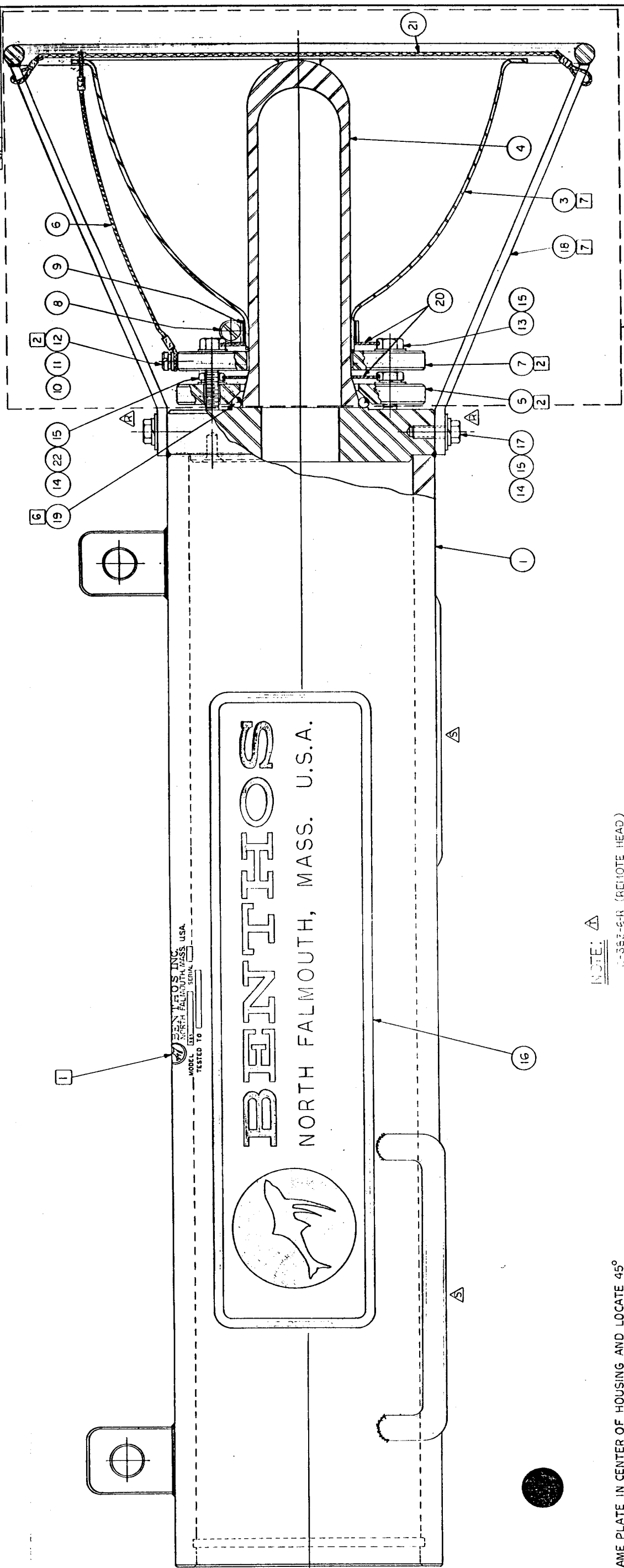
TOLERANCES UNLESS NOTED	ORIGINAL	±	FRACTIONAL	±	DECIMAL	±
CHECKED BY: K3	DRAWN BY: [Signature]	APPROVED BY: [Signature]	SCALE	FULL	TITLE	MODEL 383 HIGH INTENSITY FLASH CHASSIS ASSEMBLY
DATE	2 APR 75	DATE	1 STD	DATE	D-383-5-2 600 WS	W

**BENTHOS INC.**  
NORTH PALM BEACH, FLA. U.S.A.  
TEL. 772-224-8815

**NOTES:**  
1. REFERENCE DWG. NO. C-383-7 FOR WIRING OF THIS UNIT. C-383-14 FOR REMOTE HEAD

3. USE LARGE PATTERN WASHER.

REV.	BY	DATE	DESCRIPTION	APPROVED
1	BL	1/15/54	ISSUED FOR PRODUCTION	BL
2	BL	1/15/54	ISSUED FOR PRODUCTION	BL
3	BL	1/15/54	ISSUED FOR PRODUCTION	BL
4	BL	1/15/54	ISSUED FOR PRODUCTION	BL
5	BL	1/15/54	ISSUED FOR PRODUCTION	BL
6	BL	1/15/54	ISSUED FOR PRODUCTION	BL
7	BL	1/15/54	ISSUED FOR PRODUCTION	BL
8	BL	1/15/54	ISSUED FOR PRODUCTION	BL
9	BL	1/15/54	ISSUED FOR PRODUCTION	BL
10	BL	1/15/54	ISSUED FOR PRODUCTION	BL
11	BL	1/15/54	ISSUED FOR PRODUCTION	BL
12	BL	1/15/54	ISSUED FOR PRODUCTION	BL
13	BL	1/15/54	ISSUED FOR PRODUCTION	BL
14	BL	1/15/54	ISSUED FOR PRODUCTION	BL
15	BL	1/15/54	ISSUED FOR PRODUCTION	BL
16	BL	1/15/54	ISSUED FOR PRODUCTION	BL
17	BL	1/15/54	ISSUED FOR PRODUCTION	BL
18	BL	1/15/54	ISSUED FOR PRODUCTION	BL
19	BL	1/15/54	ISSUED FOR PRODUCTION	BL
20	BL	1/15/54	ISSUED FOR PRODUCTION	BL
21	BL	1/15/54	ISSUED FOR PRODUCTION	BL

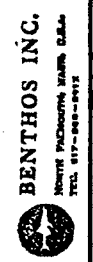


NOTE:  $\Delta$   
 1-383-6-R (REMOTE HEAD)  
 LIMIT ALL ITEM NUMBERS WITHIN THE  
 LOT/EEC AREA.  
 ONLY R-ITEM NUMBERS APPLY.  
 INSTALL-ITEM 2 C/NTO HOUSING PER  
 E-362-1-C NOTE 1

- NOTES:
- ETCH NAME PLATE IN CENTER OF HOUSING AND LOCATE 45° OFF OF CENTER LINE AS SHOWN.
  - WHEN INSTALLING ITEMS SAND 7, MAKE SURE TO POSITION THEM IN SUCH A FASHION SO THAT THE LANYARD MOUNTING HOLE IS LOCATED AT A POINT 45° AWAY FROM THE 1/4-28 MOUNTING HOLES THAT HOLD THE REFLECTOR GUARD IN PLACE.
  - DO NOT GREASE O-RING, ITEM NO. 19.
  - AFTER INSTALLING LABELS, WIPE ALL METAL PARTS WITH MARINE FORMULA CRC 6-66, BENTHOS PART NO. 0902-018.
  - PRESSURE TEST TO 17,000 P.S.I. (12,000 M) FOR 15 MIN. AND POOL TEST FOR 1 HOUR AT 3 METERS DEEP.
  - DO NOT PUT REFLECTOR, ITEM NO. 3, OR REFLECTOR GUARD, ITEM NO. 18, ON HOUSING PRIOR TO PRESSURE TEST. USE SPECIAL FIXTURE.

TOLERANCES UNLESS OTHERWISE SPECIFIED	AS SHOWN
FRAC.	±
DEC.	±
ANG.	±

CHECKED BY: KJ  
 DRAWN BY: JH  
 SCALE: FULL  
 APPROVED BY: JH  
 TITLE: HOUSING ASSEMBLY FOR MODEL 383 HIGH INTENSITY FLASH  
 DATE: 5 MAY 75  
 DRAWING NUMBER: D-383-6 STANDARD U



BENTHOS INC.  
 NORTH FALMOUTH, MASS. U.S.A.  
 TEL: 617-942-8111

Δ D-383-6-R REMOTE