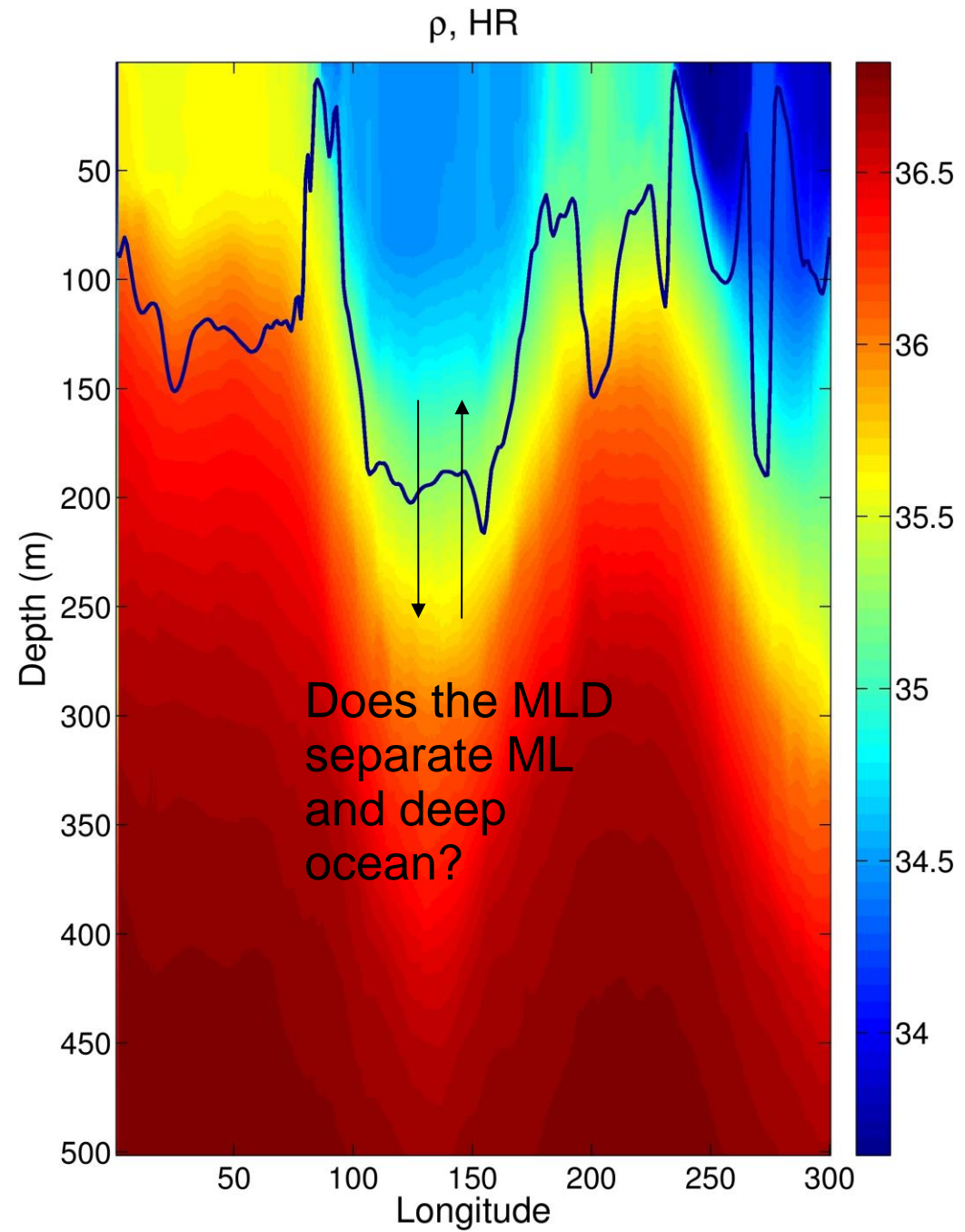
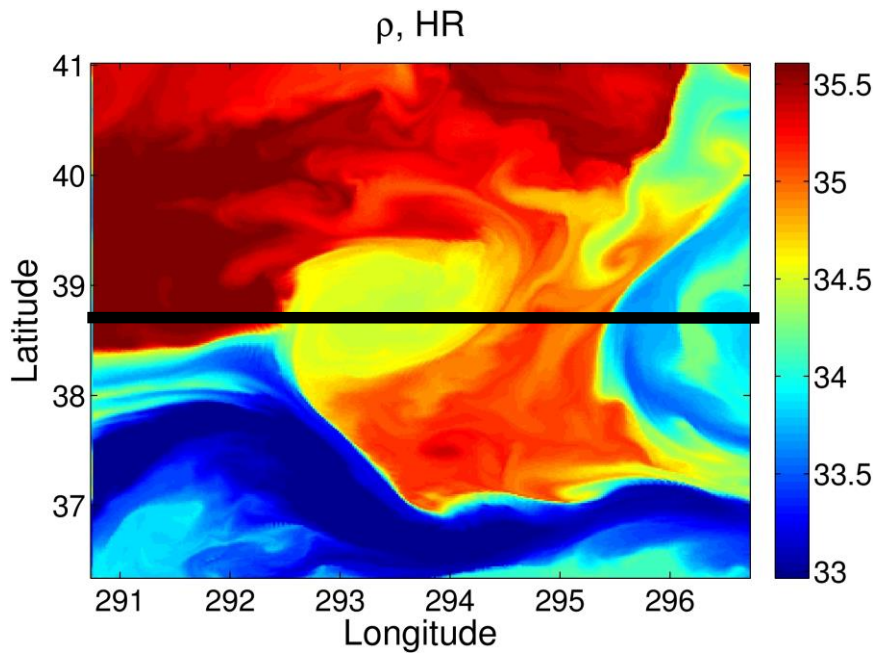


“Real” ocean case

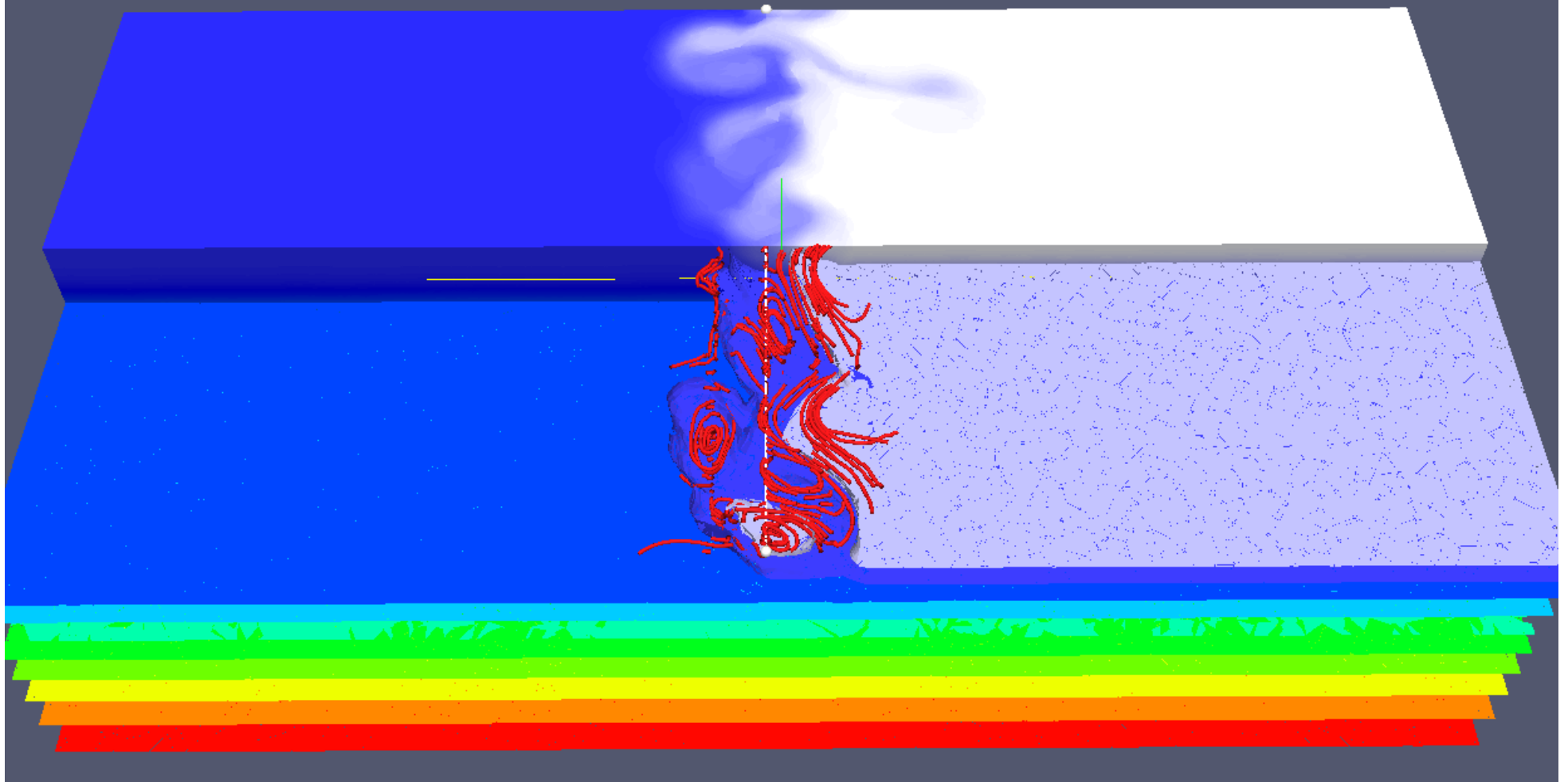
ML and deep ocean

- Ocean characterized by **submesoscale in the ML** and **mesoscale in ML and below**;
- Meso/submesoscale features affect **vertical transport**
- **Is the ML a separate domain** respect to the deep ocean?



ML as barrier for transport

- We consider an idealized mixed layer
- Particles are released everywhere in the domain
- Particles they don't cross the ML



ML as barrier for transport

